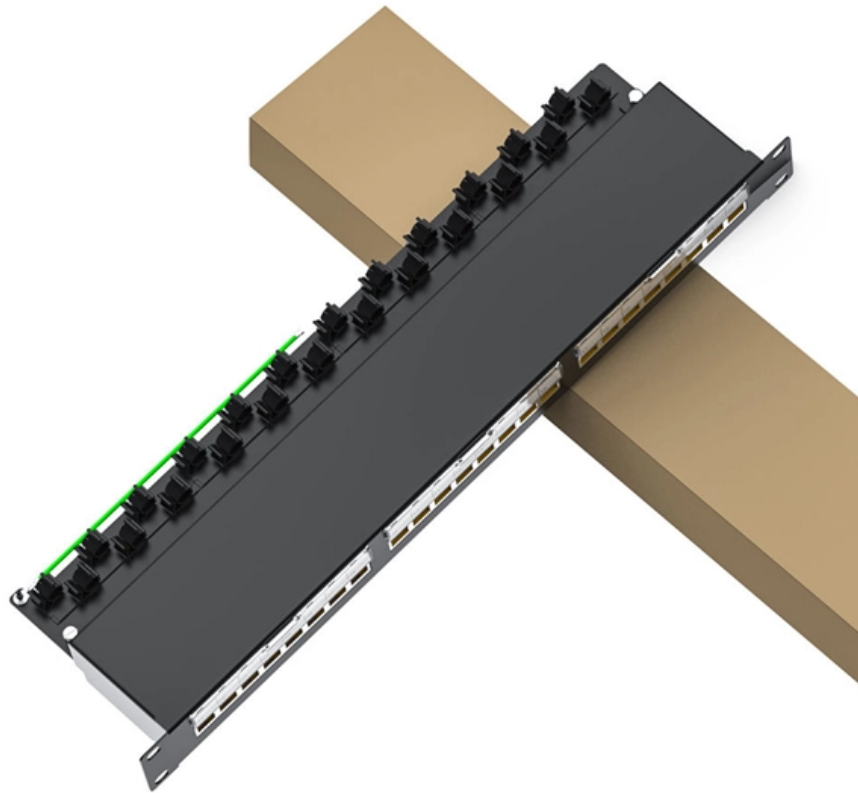


# 1 36 beam splitter





## 1 36 beam splitter

---

### **Beam Splitters - optical power splitter, beamsplitter, thin**

---

A beam splitter as shown in Figure 1 will always lead to a transverse offset of the transmitted beam, which is proportional to the thickness of the substrate. There

### **Optics , Beam Splitter , Thorlabs , BSW26R 25 x 36 mm 50:50 UVFS**

---

The BSW26R is a high-quality Beam Splitter from Thorlabs, designed with a Sub Type of Thin BS and a Base Shape of Rectangular. It boasts a width of 36 mm and a height of 25 mm, with a thickness of 1



## **Optics , Beam Splitter , Semrock , Di01-R355-25x36 25.2mm x 35.6**

---

Di01-R355-25x36 25.2mm x 36.6 mm; 355nm Laser BrightLine Single-Edge Laser Dichroic Beamsplitter This is a Di01-R355-25x36 25.2mm x 36.6 mm; 355nm Laser BrightLine Single-Edge Laser Dichroic

## **Optics , Beam Splitter , Semrock , Di03-R405/488/561/635-t3-25x36**

---

The beam splitter features a coating on the front side, specifically the sem di03r40548856163. This coating is designed to optimize the performance of the beam splitter when used with the specified

## **Polarizing Beamsplitters**

---



Polarizing Beamsplitters are typically designed for 0° or 45° angle of incidence with a 90° separation of the beams, depending on the configuration. Edmund Optics

## **Optics , Beam Splitter , Thorlabs , BCP46R 25 x 36 mm UVFS**

---

BCP46R 25 x 36 mm UVFS Beamsplitter Compensator Plate; 45° AOI AR Coating: 1200-1600nm; t=1 mm The BCP46R is a high-quality beamsplitter compensator plate designed for optimal performance

## **Optics , Beam Splitter , Thorlabs , BSN12R 25 x 36 mm 10:90 (R:T)**

---

"Discover the BSN12R Beam Splitter by Thorlabs, a 25 x 36 mm 10:90 (R:T) UVFS Plate Beamsplitter with a 1.2-1.6  $\mu\text{m}$  coating and 1 mm thickness. Optimized for 633 nm wavelength, this thin BS offers



## **Beam Splitter Selection Guide**

---

These beamsplitters are made from high grade glass materials with laser grade surface flatness and surface quality and have a tighter tolerance on the splitting ratio.

## **Optical Beamsplitters , Beamsplitter Selection , Edmund**

---

Beamsplitters are optical components used to split input light into two separate parts. Beamsplitters are common components in laser or illumination systems.

## **Optics , Beam Splitter , Semrock , Di01-R405/488/532/635-25x36**

---



This Thin BS, available at IDEX-HS, features a 25.2mm x 35.6 mm size, 1.05mm thickness, and 405nm wavelength. Ideal for various laser applications, it's UVFS mal-1965 Material ID ensures top-notch

## **Optics , Beam Splitter , Semrock , Di03-R660-t1-25x36 25.2mm x 35.6**

---

Di03-R660-t1-25x36 25.2mm x 35.6 mm; 660nm Laser BrightLine Single-Edge super-resolution /TIRF Dichroic Beamsplitter This product is a Thin Beam Splitter, specifically designed for use with lasers of

## **Beam Splitting**

---

4 Beam modulations 4.1 Beam splitters Metasurfaces are a solution to the existing problems of conventional beam splitters composed of natural materials [14, 206-212] which impose a relatively



## **Optics , Beam Splitter , Thorlabs , BSW23R 25 x 36 mm 50:50 (R:T)**

---

BSW23R 25 x 36 mm 50:50 (R:T) IR Fused Silica Plate BS; Coating: 0.9-2.6  $\mu\text{m}$ ; t=1 mm  
The BSW23R is a high-quality beam splitter (BS) offered by Thorlabs, designed with a rectangular base shape and

## **Beamsplitters**

---

Our expert technical staff will guide you through the many options we offer, ranging from custom split ratios, unique materials, and custom coatings to unusually large

## **Beamsplitter Family**

---



This document describes how Keysight's family of high performance beamsplitters offers industry-leading polarization and beam control with low wavefront distortion.

## **Optics , Beam Splitter , Thorlabs , BSW20R 25 x 36 mm 50:50 UVFS**

---

BSW20R 25 x 36 mm 50:50 UVFS Plate Beamsplitter; Coating: 250-450nm; t=1 mm The BSW20R is a high-quality Beam Splitter from Thorlabs, designed with a Sub Type of Thin BS and a Base Shape of

## **Beamsplitters , Optics , DigiKey**

---

Beamsplitters Beamsplitters (Beam Splitters) are components that split light at a specified point. These are used in various optic systems including fiber optics. They can be filtered by the type (either cube



## **Optics , Beam Splitter , Thorlabs , BSS12R 25 x 36 mm 30:70 (R:T)**

---

BSS12R 25 x 36 mm 30:70 (R:T) UVFS Plate Beamsplitter; Coating: 1.2-1.6  $\mu\text{m}$ ; t=1 mm  
The BSS12R is a high-quality Beam Splitter from Thorlabs, designed with a rectangular base shape and a thin lens

## **25 mm x 36 mm Plate Beamsplitters**

---

Thorlabs offers Non-Polarizing Plate Beamsplitters at varying wavelengths and beam splitting ratios for ultraviolet (UV), visible, near infrared (NIR), and mid-infrared

## **Beam Splitters - optical power splitter, beamsplitter, thin**

---



What are Beam Splitters? A beam splitter (or beamsplitter, power splitter) is an optical device which can split an incident light beam (e.g. a laser beam) into two

## **Optics , Beam Splitter , Thorlabs , BSW12R 25 x 36 mm 50:50 (R:T)**

---

BSW12R 25 x 36 mm 50:50 (R:T) UVFS Plate Beamsplitter; Coating: 1.2-1.6  $\mu\text{m}$ ; t=1 mm  
The BSW12R is a high-quality Beam Splitter from Thorlabs, designed with a rectangular base shape and thin lens

## **The Buyer's Guide to Beam Splitters , Blue Ridge Optics**

---

Matching the beam splitter's specifications to the characteristics of the light source ensures optimal performance. This minimizes light losses and aberrations while maintaining the



## beamsplitters selection guide

---

Large beam size, multi mirror optical set up with small power light source and supports high power laser light splitting. Polarization at 45 degree (AOI) or circle polarization light with no power loss detected.

### **Optics , Beam Splitter , Semrock , Di03-R488/561-t1-25x36 25.2mm x**

---

This product is a high-quality beam splitter, specifically designed for use with 488nm and 561nm lasers, offered by the reputable vendor, Semrock. The Di03-R488/561-t1-25x36 is a thin, rectangular

### **Optics , Beam Splitter , Semrock , Di01-R266-25x36 25.2mm x 35.6**

---



Di01-R266-25x36 25.2mm x 35.6 mm; 266nm Laser BrightLine Single-Edge Laser Dichroic Beamsplitter This is a Di01-R266-25x36 25.2mm x 35.6 mm; 266nm Laser BrightLine Single-Edge Laser Dichroic

## Contact Us

---

For datasheets, pricing, or custom optical networking solutions, please visit:  
<https://www.entrenamientointeligente.es>