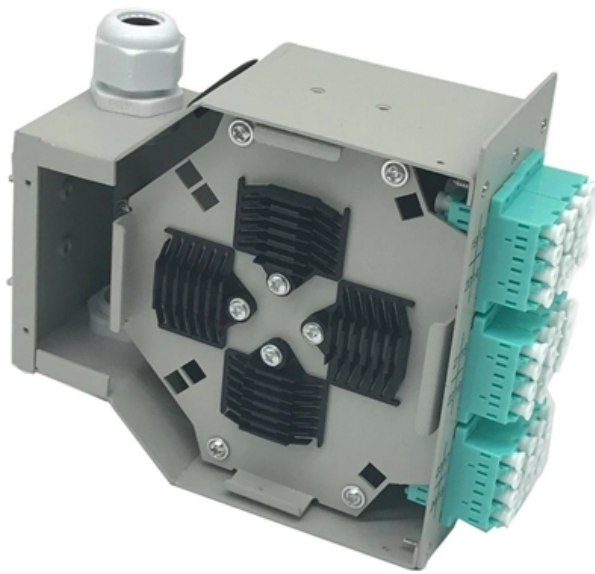


1 Optical Fiber to 12 Electrical Switches Gigabit





1 Optical Fiber to 12 Electrical Switches Gigabit

What is a gigabit switch?

What is a gigabit switch? A gigabit switch is a type of network switch, typically Ethernet-based, that allows devices to be connected to a LAN at speeds of 1

MXS3540-12F: 12-Port 1G/10G SFP/SFP+ Fiber Switch

The MXS3540-12F seamlessly integrates with both 1G and 10G fiber networks, ensuring true gigabit performance. With 12 fiber ports supporting 1Gbps/10Gbps,



12-Port Gigabit Fiber Metro Ethernet Switch

The DGS-1210ME Series Metro Ethernet Switches feature a variety of port configurations, including 10/100/1000BASE-T RJ-45 ports, 1G SFP ports, and

Fiber Switches

Ethernet Switches with fiber uplink ports or all fiber switches, commercial grade, managed and unmanaged and PoE enabled are all available in this section.

Gigabit Ethernet Fiber, Switch 8 Optical Port 2 Electrical

Gigabit Ethernet Fiber, Switch 8 Optical Port 2 Electrical Port Up To 120km, RJ45 Port SFP Fiber Media Converter, Efficient Transmission Router : Buy Online at Best Price in KSA - Souq is now



Upgrading To Fiber Optic Internet , Verizon Business

Upgrading to fiber optic internet? Experience faster speeds, greater reliability and enhanced business efficiency. Future-proof your connectivity today. Learn more!

Fiber Optic Network Switches , Ethernet to Fiber

VERSITRON manufactures a wide range of fiber optic switches that provide links for your 10Base, 100Base, 1000Base Gigabit, and 10 Gigabit networks

CLR Networks , Fiber Optical Gigabit Ethernet Core Switch CLR-SWG



CLR-SWG-1212F is a L2+ managed fiber switch that is designed to have 12 x SFP slots which support both 100M and 1G SFP modules. Additionally 12 x RJ45 ports 10/100/1000Base-T which are working

homefibre 1412 RS-GIG, 12-port Gigabit POF Switch

The switch features low power consumption, good configuration options and a high data rate of 1Gbit/s over each port. By using standardized IP protocols, the

Ubiquiti EdgeSwitch Fiber 12 Port Gigabit Switch

The EdgeSwitch Fiber is a fully managed, Gigabit fiber switch, delivering robust performance and intelligent switching for high-bandwidth networks. The EdgeSwitch Fiber offers an extensive suite of



Netgear 12-Port 10-Gigabit/Multi-Gigabit Ethernet Smart

ProSAFE Lifetime Protection Lifetime Limited Hardware warranty Next Business Day Replacement and 24/7 chat with a NETGEAR expert FUTURE PROOF Can

Fiber Optic Network Switches , Ethernet to Fiber

We offer solutions that provide seamless transmission and conversion from Ethernet media to multimode or singlemode fiber. Our Ethernet network switches with fiber

An introduction to SFP ports on a Gigabit switch

An introduction to SFP ports on a Gigabit switch SFP ports enable Gigabit switches to connect to a variety of fiber and Ethernet cables and extend switching functionality throughout the



Industrial 12 Port Gigabit Ethernet Switch, L2+ Managed

About this item ?Port Configuration?: 12 Ports Optical Fiber Ethernet Gigabit Switch equipped with 8 10/100/1000BASE-T ports and 4 1000Base-X SFP ports.

Gigabit SFP Network Switch Selection Guide for 2025

A Gigabit SFP switch is a network switch that primarily operates at 1 Gigabit per second and is equipped with Small Form-Factor Pluggable (SFP) ports, which are hot-swappable interface



Estink SFP Ethernet Fiber Optic Switch, 1000m Ethernet

Product description SFP Ethernet Fiber Optic Switch, 1000m Ethernet Fiber Optic Transceiver, 4 Optical Ports 2 Electrical Ports, 120km, with LED

Understanding SFP Port: A Guide to Gigabit Ethernet

A: An SFP module is a small form factor pluggable transceiver inserted into an SFP port. It converts electrical signals from the device into optical signals

Gigabit 12-port industrial PoE switch

Unmanaged industrial PoE fiber switch with 10*10/100/1000M RJ45 ports and 2*1000M uplink SFP fiber ports. Port 1-8 can support IEEE 802.3 af/at PoE



SFP-1G-SX Explained: The Essential Guide to 1G

Table of Contents This guide dives deep into the SFP-1G-SX transceiver, the industry-standard solution for 1 Gigabit short-range fiber optic

Connecting Network Switches via Fiber

Connecting Network Switches via Fiber As network speeds continue to advance from 1 Gb and beyond, connecting network switches via copper limits data speed and

Ubiquiti EdgeSwitch 12 Fiber

The EdgeSwitch Fiber is a fully managed, PoE+ Gigabit switch, delivering robust



performance and intelligent switching for growing networks.

China OEM Factory para sa Gigabit Managed Poe Switch

5-port Fiber Ethernet Switch, 1-port 100Base-FX and 4-port 10/100Base-T(X) Introduction
JHA-F14 series is complies with IEEE802.3 standards, It is designed to convert data signal between 100Base

Fiber Optic Switches , Advanced Testing Equipment

The GAOTek 24-Port Gigabit Optical Fiber Switch features 24 SFP ports, 92 Gbps switching capacity, 480 Gbps stack bandwidth, and supports up to 2000 wireless clients, making it ideal for high



Optical Transceivers , Fiber Optic Transceivers , Form

Using fiber optic technology, it converts electrical signals from switches or routers into optical signals, transmitted as pulses of light, enabling

Multi-mode optical fiber

Multi-mode optical fiber is a type of optical fiber mostly used for communication over short distances, such as within a building or on a campus. Multi-mode links can

Contact Us

For datasheets, pricing, or custom optical networking solutions, please visit:
<https://www.entrenamientointeligente.es>