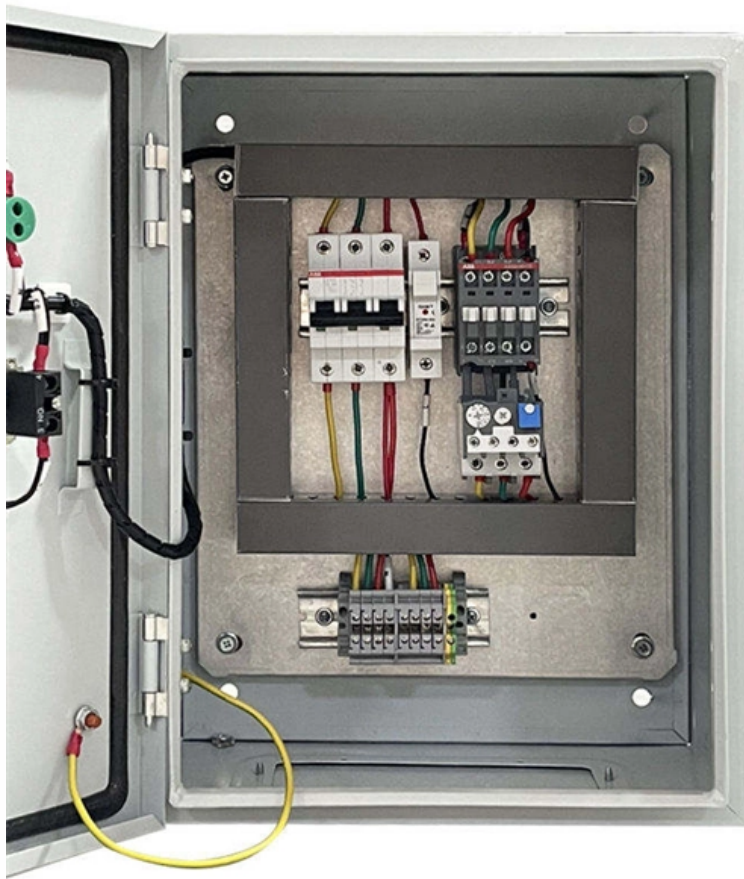


16-channel KVM digital switcher





16-channel KVM digital switcher

16-Port Cat5 Dual Rail LCD KVM Switch with 19 in. LCD

16-Port Cat5 Dual Rail LCD KVM Switch with 19 in. LCD Model No.: DL2916 Outstanding Hardware: A short depth dual rail rack console featuring a 19" LCD

16-Port HDMI KVM Switch with USB 3.0, 4K60Hz, EDID,

HKS1601-P23: 16-Port HDMI KVM Switch 4K60Hz with USB 3.0 enables fast data transfer and peripheral sharing across 16 PCs. Switch via buttons, autoscan,



Dell DMPU2016 Digital KVM Switch 16 Ports Remote

Dell DMPU2016 digital KVM offers 16 ports, remote access and up to 32 user sessions to centralize server control and meet TAA needs. Order now.

16 Port KVM over IP Switches with Two Digital Pathways

ATEN KN2116VA 16 Port 3 User IP KVM Switch, Dual AC + Virtual Media - Discontinued
\$4,527.00 \$4,447.93 ADD TO CART

KVM over IP Switch, 16-fach

Mit seiner vollständig digitalen KVM-over-IP-Architektur verhindert der KG0016 Videoverzögerungen und Einfrieren und sorgt so für einen stabilen und reibungslosen Bildschirm, insbesondere bei



16-Port KVM over IP OmniBus Gateway

The All-digital KVM over IP OmniBus Gateway allows real-time, up to 32 concurrent remote user access to any connected servers regardless where and when the

DigitalMedia Matrix Switchers [Crestron Electronics, Inc.]

Fully scalable and modular, DM switchers can accommodate any combination of digital sources including 4K60 4:4:4 HDR, and analog sources. Additionally, only

16 Port USB HDMI® KVM Switch with 17?



Widescreen

The Kinan's LH1716 is a widescreen 16 port USB HDMI KVM console with monitor. It integrates a 17.3" widescreen LCD monitor, keyboard & touchpad, and a 16 ports

VS-1616DN-EM 2x2 to 16x16 Modular 4K60 4:2:0

VS-1616DN-EM is a high-performance 2x2 to 16x16 4K@60Hz (4:2:0) modular matrix switcher chassis for AV signals. The unit is a multi-format digital switcher,

Avocent AV 3216 , KVM Over IP Switch

KVM OVER IP: KVM switch with sixteen ports for up to 16 servers from any location via the onboard web browser. USER SUPPORT: Support for 2 local ports and 1



Vertiv(TM) Cybex(TM) Secure MultiViewer KVM Switch 16 port

Home Products & Services Secure KVM Vertiv(TM) Cybex(TM) Secure MultiViewer KVM Switch SCMV2160DPH, Vertiv(TM) Cybex(TM) Secure MultiViewer KVM Switch 16

16-Port HDMI KVM Switch with USB 3.0, 4K60Hz, EDID,

It supports a single keyboard and mouse to control 16 computers and 1 monitor at HDMI 2.0 4K@60Hz, featuring advanced EDID emulation technology. Ideal for

Vertiv Avocent MPU KVM Switch , 16 port , 2 Digital Path



Know your gear The Vertiv Avocent MergePoint Unity Switch combines KVM over IP and serial console management technology in a single appliance delivering flexible management of connected devices

KL1516AM

ALTUSENKL1516LCDKVM Switch features independently retractable, dual slide 17" LED-backlit LCD monitor and keyboard with built-in touchpad. A single

16 Port USB HDMI® KVM Switch with 17" Widescreen

It integrates a 17.3" widescreen LCD monitor, keyboard & touchpad, and a 16 ports HDMI KVM switch in a 1U sliding housing. It can control up to 16 computers with



VS-1616D 2x2 to 16x16 Modular Multi-Format Digital

The VS-1616D is a high-performance matrix switcher chassis for AV signals. The unit is modular and populated from 2x2 to 16x16 in increments of two inputs

16-Port Multi-Interface Cat 5 Dual Rail LCD KVM Switch

ATEN KL1516ALCD KVM Switch features independently retractable, dual slide 17" or 19" LED-backlit LCD monitor and keyboard with built-in touchpad. The

16-Port HDMI KVM Switch 4K, USB Hub, Rackmount,

HKS1601-EB23: 16-Port HDMI KVM Switch with USB hub lets you manage 16 PCs via one keyboard, mouse, and monitor. Supports multiple switching modes and



Aten KN1116va KVM Over IP-Switch with 16 Ports and 2

Aten KN1116va KVM Over IP-Switch with 16 Ports and 2 Bus with Audio and V-Media up to 1920x1200 The KN1116va is an IP-based KVM control unit, with dual

Adder AVX1016 AdderView CATx 1000-Serie 16-Port

AdderAVX1016AdderViewCATx1000-Serie16-PortKVMA-SwitchTheAdderViewCATx1000 1x16 KVMA Switch is a high density, small form factor KVM switch

VS-1616D 2x2 to 16x16 Modular Multi Format Digital



Matrix Switcher

The VS-1616D is a high-performance matrix switcher chassis for AV signals. The unit is modular and populated from 2x2 to 16x16 in increments of two inputs and/or two outputs. The chassis includes a

16-Port PS/2-USB VGA KVM Switch

As many as 16 additional switches can be cascaded bringing the total number of connected computers to 256 computers that can be controlled from a single KVM

Dell DAV2216-G01 16-Port KVM Switch RJ45

Dell DAV2216-G01 is an Analog 16x Computer RJ45 KVM Switch, ideal for managing multiple computers in server rooms. It supports up to 16 KVM ports and operates



Tripp Lite HDMIUSB KVM Switch 16 Port with

2-year limited warranty Widely compatible KVM switch works with Windows, Mac and Linux operating systems Cascade up to 3 levels to control as many as 256

2-Console 16-Port Multi-Interface (DisplayPort, HDMI, DVI, VGA)

The KH2516A KVM switch is a control unit that allows IT administrators to access and control multiple computers from two PS/2 or USB KVM consoles (two bus). Operators working at up to two consoles

ab 16-Port KVM-Switches



16-fach Rack-Mount KVM-Switches in verschiedenen Ausführungen. Es gibt VGA KVM-Switches und auch 16-fach DVI KVM-Switches oder 16-fach HDMI KVM-Switches.

Contact Us

For datasheets, pricing, or custom optical networking solutions, please visit:
<https://www.entrenamientointeligente.es>