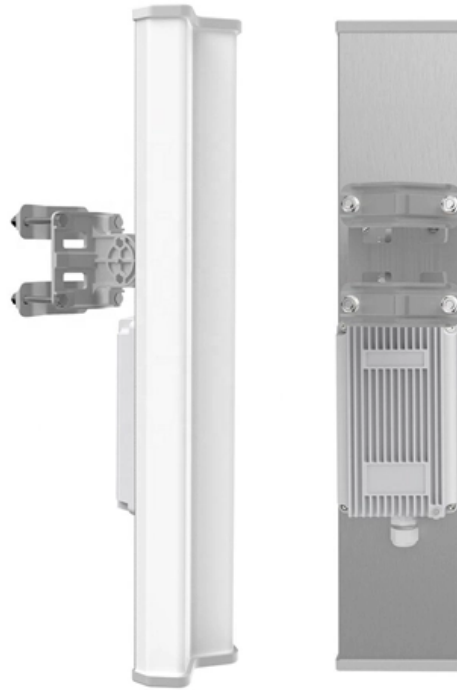


# 19-inch 4U Standard Chassis





## 19-inch 4U Standard Chassis

---

# Rackmount chassis Server case 19 inch ATX 4U N407

---

KI-N407 is a reliable and stable 4U-high industrial computer chassis use by 1.2mm high end SGG steel The full size I/O supports all ATX motherboard with a Dual

## 19-Inch Rack Size and Dimensions Explained: The Complete Guide to

---

Discover the essential guide to 19-inch rack sizes and dimensions for servers and rackmount PCs. Learn about standards, specifications, and best practices today!



## 19-Inch Racking , 19-Inch Rack Units , RS

---

19-Inch Racking We have a wide range of server racking for mounting and storing electronic and networking equipment that includes 19-inch racks, sub-racks,

### TPS 4U Server Chassis

---

TPS 4U Chassis: High-capacity 19-inch rack mount server chassis. Tool-less design, easy maintenance. Perfect for data centers and IT equipment.

### S4U-420 4U 19 Inch Standard Rack-Mounted Industrial

---

ARBORS4U-420, a 4U rack-mounted industrial computer, designed for high performance and customization. With anti-shock features and multiple expansion



## **4U-Leading Rackmount Chassis Server case 1U, 2U, 3U**

---

Rackmount chassis 4U Standard industrial Rackmount ATX Chassis N610H Drives 3 x 5.25" + 1 x 3.5" (int.) + 2 x 2.5" Motherboard Size ISA/PCI/PCIMG industrial and

## **19" Industrial Rack-Mount Server Chassis, 4UH, IPC 4U**

---

Description The IPC 4U 4129L is a 4U case with a depth of 695mm and thus offers sufficient space for high-performance server systems.

## **19" Industrial Rack-Mount Server Chassis, 4UH, IPC 4U-4129L, black**

---



The IPC 4U 4129L is a 4U case with a depth of 695mm and thus offers sufficient space for high-performance server systems.

## UNYKAch

---

This sturdy 4U chassis is designed to provide optimal versatility and performance in professional environments. With its standard 19-inch design, the UK4329

## AMG2027 DIN RAIL 4U 19-INCH RACK CHASSIS

---

Industrial 19inch Racks The AMG2027 is a DIN rail rack chassis for standard 19 inch equipment racks. The 4U profile allows for mounting any combination of AMG DIN rail mountable products along with



## **Choose the Perfect Rackmount Server Case: 1U to 4U**

---

The "U" in 1U, 2U, 3U, and 4U rackmount chassis refers to a standard unit of measurement (1.75 inches or 44.45 millimeters) that defines the

### **Server case rackmount chassis 19 inch IPC ATX 4U**

---

Standard Details It defines the placement of mounting holes, the rear I/O panel, and power connectors for broad interoperability. Advantages Provides superior

## **ARC-645 , Official AAEON Technology Distributor and Integrator**

---

Details The ARC 645 is a 4U 19 inch rackmount industrial chassis designed to support



both full size and half size CPU cards, offering a flexible platform for a wide range of industrial computing applications.

## **1U Chassis -19 Inch Rack Mount**

---

1U chassis is one of the best selling case for 19inch rack mount chassis, we not only have 1U/2U/3U/4U server case, but can manufacture different sizes according to

## **19-inch E-ATX rack-mount 4U server case**

---

This extremely spacious and robust 19-inch rack-mount server chassis with 4 units (4U) and 68,7cm depth is a good choice for the installation of huge server



## **Rackmount chassis Server case 19 inch HPTX EATX 4U N465**

---

KI-N465 is a reliable and stable 4U-high industrial computer chassis use by 1.2mm high end SGG steel The full size I/O supports all motherboard smaller than 15" x 16.7" and the front bezel supports 12 full

## **EBS-4U500|AIoT & Industrial Solutions|ASUS Global**

---

Superb construction: Standard 19" rackmount 4U chassis with durable 1.2mm SGCC sheet metal. Broad compatibility: Compatible with ATX, micro-ATX or Mini-ITX

## **10 Best Server Chassis for Home Lab Setups (May 2026) reviews**

---

Discover the best server chassis for home lab setups with our 2026 guide. We tested 10 models for performance, storage capacity, and value.



## 10 Best Rackmount Storage Servers for Unmatched Performance in

---

Best For: The Rosewill 4U Rackmount Server Chassis is best for businesses and IT professionals seeking a high-capacity solution for data-intensive applications and expansive storage

## 19" Rackmount Chassis

---

19" Rackmount Chassis Optimize your server infrastructure with our 19" Rackmount Chassis solutions. These 4U standard rack-mounted industrial computers are engineered for maximum reliability and



## 4U-Leading Rackmount Chassis Server case 1U, 2U, 3U

---

Rackmount chassis Server case 19 inch ATX microATX 4U two door N4058 Drives 3 \* 5.25 + 8 \* 3.5 (int.) Motherboard Size 12 \* 9.6 (ATX, microATX) Dimension

## 19 Inch Equipment Rack 4U -Rack Mount Chassis

---

OEM 19 Inch Equipment Rack 4U Instrumentation Equipment Enclosure Ease of assembly and accessibility Strong construction and 3/5/8mm thickness aluminium

## UNYKAch

---

The 19" 4U UK4229 EVO Rack Case is designed for maximum efficiency, providing a robust and versatile solution for storage and organization needs in rack cabinets,



## Contact Us

---

For datasheets, pricing, or custom optical networking solutions, please visit:  
<https://www.entrenamientointeligente.es>