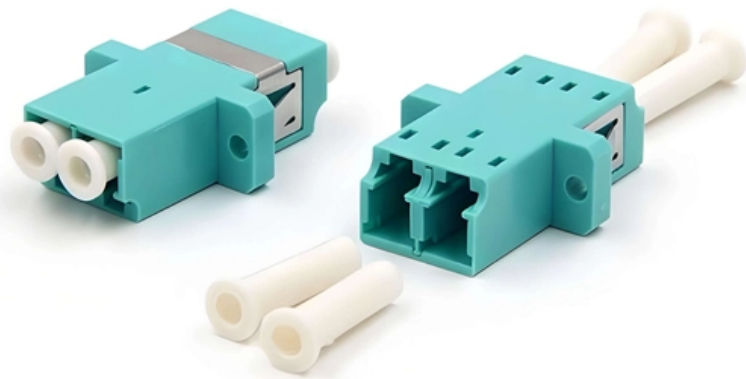


600 Cable Tray Funnel Dimensions





Overview

The Unitrunk KLMR600T is a 600mm width medium duty cable tray, from the Uniklip Medium Duty Cable Tray Systems range. This product is manufactured to meet BS 61537:2007 standards and is composed of pre-galvanised steel material. All illustrations, descriptions and technical information included in this document are provided as indications and can cable trays are equivalent. The mechanical and electrical characteristics, tests, certifications, overall quality management, recommendations mentioned. In practice, cable tray dimensions are a system of interrelated measurements —width, depth, length, and material thickness—that directly affect cable fill compliance, heat dissipation, structural loading, and long-term expandability. You are here: Home Sector Utilities Cable Tray for Utilities Heavy Duty (50mm Flange) 600mm HDG Cable Tray & Bracketry Heavy-duty 600mm cable tray and bracketry, manufactured from hot dip galvanised mild steel to ISO EN 1461.



600 Cable Tray Funnel Dimensions

Tray and Ladder Sizing by Cable Capacity Calculator - IEC

Proper tray and ladder sizing ensures safe, efficient, and maintainable electrical installations in all engineering applications. IEC 61537 and IEC 60364 require evaluating tray dimensions based on

Cable tray, Width: 600mm

Cable tray for horizontal cable routing. Fitting underneath the worktop. For mounting cables, multiple socket strips, and adapters. Fastening material. RAL 7035 light grey powder coated. Here you can



Cable Tray Size Chart and Selection Guide

Selecting the appropriate electrical cable tray dimensions is a critical decision that directly impacts the safety, efficiency, and longevity of any industrial or commercial electrical installation.

CT Cable Tray

The CT cable tray is continuously perforated, and made from 1 piece of material. It provides a solution for installers who are looking for an economical support option, only require a shallow cable laying

Unitrunk KLMR600T Tray 600x25mmx3m

The Unitrunk KLMR600T is a 600mm width medium duty cable tray, from the Uniklip



Medium Duty Cable Tray Systems range. This product is manufactured to meet BS 61537:2007 standards and is

Cable Tray Width, Dimensions and Specifications as per

Learn about cable tray width dimensions and specifications as per NEC standards. Understand types, sizes, materials, and installation guidelines for safe and

600mm Heavy Duty Cable Tray - 3m , HDG Steel

The 600mm Premier heavy duty cable tray provides robust and reliable support for cable management in industrial, commercial, and construction environments.



Tray Cable Size Chart: Choosing the Right Gauge

Choosing the correct tray cable gauge is a balance of performance, safety and compliance. The tray cable size chart offers a solid starting point, but realworld conditions--like run

Cable Tray Dimensions Guide: Standard Sizes, Tray

We will first explain standard cable tray dimensions used across the industry, then examine how dimensions vary by tray type, and finally show how to

CF600 FIBER CABLE TRAY

CF600: CF means fiber cable tray; 600 means the width 600mm; the height is 100mm; HxW refers to inner size; the length is 2000mm per piece. Instruction



Tray Cable , Tray Cable Inventory for Industrial Use

Browse OmniCable's extensive tray cable inventory, including 600V tray cables for power and control in wet, dry, and hazardous locations, with single and multi

Cable Tray Dimensions Guide: Standard Sizes, Tray

Standard Cable Tray Dimensions Cable tray dimensions are not chosen at random. Across most global markets, they follow well-established

600mm Return Flange Medium Duty Cable Tray 25mm



Home > Cable Management > Steel Cable Tray > Medium Duty Pre-Galvanised > 600mm Return Flange Medium Duty Cable Tray 25mm Deep (3m Length)

Unlocking the Secret: Exact Electrical Cable Tray Dimensions for

Discover essential electrical cable tray dimensions, including standard sizes, materials, and proper installation guidelines. Learn how to select the right cable tray for your project with this

Please find below a selection of our fast moving

900 940 211 Available across this size range If you require 50 - 600 in please refer to the Cable Tray section on



Channel tray

T& B channel tray systems are fabricated from a corrosion-resistant metal (low-carbon steel, stainless steel or an aluminum alloy) or from a metal with a corrosion-resistant finish (zinc or epoxy). The

Cable Tray Size Chart and Selection Guide

Selecting the appropriate electrical cable tray dimensions is a critical decision that directly impacts the safety, efficiency, and longevity of any industrial or commercial electrical installation.

600mm Heavy Duty Cable Tray (3m Length)

All Heavy Duty cable tray supplied as 3 metre lengths up to 900mm wide. Available in 3 standard designs of cable tray to suit individual applications. Distinctive hole



Product Specifications: CABLE TRAY

FDG CABLE TRAY ng; Power, Data, and Audio Visual. A quick and easy system to install without the need for specialised tools or equipment, makes it a first choice for Comm solution that works for your

How Many Cables Can a Cable Tray Hold? A

How Many Cables Can a Cable Tray Hold? A Comprehensive Guide During the design of a cable management system, one of the most important

600mm Medium Duty Cable Tray x 3 Meter



Shop 600mm medium duty cable tray - 3 metre pre-galvanised steel. Ideal for industrial cable management. Fast 1-4 day UK delivery!

TRAY CABLE POWER CABLE

General purpose cable for use in primary power and feeder circuits in a broad range of commercial and industrial applications. Approved for installation indoors or outdoors, aerially, in conduits, ducts, cable

Cable tray manual

INTRODUCTION The B-Line series Cable Tray Manual was produced by our technical staff. We recognize the need for a complete cable tray reference source for electrical engineers and designers.



Contact Us

For datasheets, pricing, or custom optical networking solutions, please visit:
<https://www.entrenamientointeligente.es>