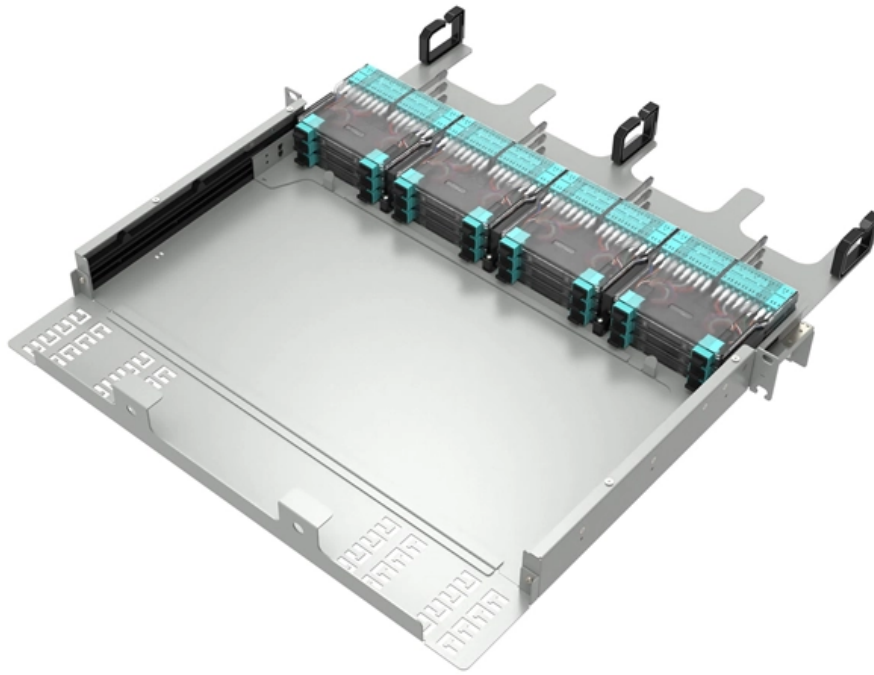


# **Angola Steel Plate Distribution Box Explosion-proof Model**





## Overview

---

The explosion proof enclosure range has Atex, IECEx, UL Certification suitable for Zone 1, 2, 21 and 22 Hazardous Areas applications. The highlights: Up to four control elements can be mounted under a single actuator. We offer bespoke, custom-made terminal boxes and terminal box combinations, as well as standard products with short delivery times. A complete line of hazardous location, increased safety, flameproof and explosionproof enclosures and junction boxes. The explosion-protected junction and pulling boxes, available in different methods of protection and materials, can also be used with terminals, as a command and control units and as interface units depending on the models.



## Angola Steel Plate Distribution Box Explosion-proof Model

---

### **Explosion-proof steel distributors (Ex d) , GENERI, S.r.o.**

---

They serve for distribution and protection in AC and DC networks with the possibility of signalling of operating states, measurement of electrical quantities, regulation, switching and control of auxiliary

### **Model and Specification of Explosion-Proof Distribution Box**

---

Explosion-proof lighting distribution boxes and cabinets come in a variety of models. They vary in terms of materials, including metal and flame-retardant plastic; installation methods, such as



## Explosion Proof Enclosures

---

Ex-Proof & Flameproof Junction Boxes & Enclosures Supermec ATEX Junction Box & Enclosures are designed to satisfy most of our clients' requirements for CONTROL explosion-proof and flameproof

## Ex Enclosure Systems

---

They are completely pre-assembled explosion protection enclosures made of resistant plastic including ATEX and IECEx approval. The special feature of the

## Explosion-proof junction Boxes , Cortem S.p.A.

---

The explosion-protected junction and pulling boxes, available in different methods of protection and materials, can also be used with terminals, as a command and



## **Top 3 Facts About Explosion Proof Distribution Box & Electrical**

---

Learn the top 3 facts about explosion proof distribution boxes & electrical enclosures--certifications (ATEX, IECEx, NEMA), durable materials, and customization for

## **Distribution Box Explosion-proof Enclosure-ENC GROUP**

---

PU foam imported from Germany to ensure IP66 waterproof level, 90° folded gutter to prevent dirt or water entry when door open.



## **Terminal and Junction Boxes (Ex d) , Explosion Protection**

---

Constructed from corrosion-resistant, copper-free aluminum, the GUB series terminal boxes and junction boxes are available in a variety of sizes and configurations to suit different installation needs.

### **Ex d Junction Box Aluminium EJB-A , Supermec**

---

EJB A series Ex d enclosures are normally used in the chemical and petrochemical plants, offshore platforms, refineries and any other industry where hazardous

### **HLDP03-Series Explosion-proof Distribution Boxes Exporter China**

---

[Home](#) >> [Products](#) >> [Explosion Proof Electric Apparatus](#) >> [HLDP03-Series Explosion-proof Distribution Boxes](#)



## **Ex Local Control Stations & Distribution Boxes**

---

Manufacture custom made Local Control Stations & Distribution Boxes, local control panel boards and stations, explosion protected control units, distribution

## **Ex Junction Boxes and Atex Enclosures · Atex Delvalle**

---

Our Atex Delvalle's Ex junction boxes and large enclosures are flameproof and prepared for use them in explosive atmospheres zones 1,2,21 and 22. ATEX

## **Ex junction and terminal boxes - Explosion-Proof ,**

---

Ex junction and terminal boxes are essential components for making safe electrical connections in environments where explosive gases or dust may be present. In such industrial settings, electrical

## **Distribution Boxes**

---

Distribution Boxes BXM(D)8061 Explosion proof Distribution Boxes Lighting or Power (Ex db ec IIC) Distribution Boxes BXM (D)81 Explosion proof Distribution

## **Explosion-Proof Distribution Box BX53-I , Product Center**

---

BX53-I Explosion-Proof Distribution Box manages and distributes power safely in hazardous areas, mitigating ignition risks.



## **Ex Local Control Stations & Distribution Boxes**

---

Atex control stations, explosion protected control units and distribution boxes made stainless steel maritime grade AISI 316L or AISI 304L. Atex Delvalle provides a

## **Explosion-Proof Distribution Box , Product Center**

---

Explosion-proof distribution boxes are designed to safely control and distribute electrical power in hazardous environments, preventing ignition risks.

## **Enclosures and Junctions Boxes**

---

To protect your equipment and employees, they need to be designed to fully contain



and confine an explosive force within the enclosure and be strong enough to withstand the effects of corrosion,

## **Principle and applicable area of explosion-proof distribution box**

---

Because when explosion-proof distribution boxes are properly specified, installed, and maintained, they become invisible guardians. They represent the quiet professionalism of engineers

## **Ex-proof Junction Box, Terminal Box & Enclosures , Supermec**

---

Supermec Explosion Proof Junction Box & Hazardous Area Electrical Control Equipment are able to resist highly corrosive environment and ensure a modern functionality solution.



## Explosion Proof Enclosure Comprehensive Guide

---

The phrase ' explosion proof ' does not mean, however, that an enclosure would withstand an explosion. It means that the structure was

### Contact Us

---

For datasheets, pricing, or custom optical networking solutions, please visit:  
<https://www.entrenamientointeligente.es>