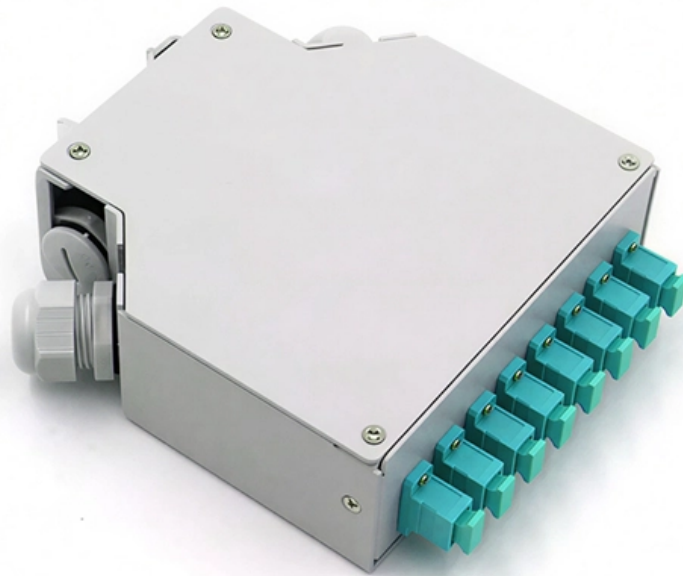


# **Are fiber optic splice boxes durable**

---





## Are fiber optic splice boxes durable

---

# 1 Core Fiber Optic Distribution Box

---

Home / Fiber Distribution Box / 1 Core Fiber Optic Distribution Box 1 Core Fiber Optic Distribution Box Features Total enclosed structure for maximum protection

## Fiber Optic Splice Closure Guide , Structure, Types

---

A fiber optic splice closure is not simply a protective box. It is a carefully engineered system that combines mechanical protection, environmental

## FTTH Fiber Distribution Boxes

---



A fiber distribution box--also known as a fiber optic terminal or splice enclosure--serves as a central hub in fiber optic networks. It is designed to manage, organize, and protect fiber optic cables and

## **Custom Cable Assembly Manufacturing , Fibertronics, Inc.**

---

Fibertronics, Inc. is an SBA certified woman-owned small business providing USA manufactured customized fiber optic and low voltage cable assemblies, and

## **Fiber Joint Box VS Fibre Optic Enclosures VS Fiber Splicing Box**

---

A Fiber Joint Box (also called fiber closure, splice closure, or cable joint enclosure) is a sealed outdoor or underground enclosure designed to protect fiber optic cable splices from



## **Haile SFP-GE40-SM1310-A 1.25G Gigabit Single Fiber Optical Module**

---

Shop Haile SFP-GE40-SM1310-A Gigabit optical module with 1.25Gbps speed, 1310/1550nm wavelengths, and single-mode single-fiber support. Ideal for long-distance SFP networking.

## **2025 Guide to Fiber Optic Splice Enclosures for Extreme**

---

Bad weather can damage fiber optic networks. Fiber optic splice enclosures protect these networks from harm. They keep connections safe from

## **A Step-by-Step Guide to Fiber Optic Cable**



## Installation

---

Splicing and Termination: Splice the fiber optic cable at manholes or junction boxes, and terminate it at outdoor cabinets or buildings, using

### **48 Core Fiber OTerminal Box for High-Density FTTH**

---

The 48-Core Fiber Terminal Box is a versatile, high-capacity solution for FTTH applications, offering secure splicing, distribution, and durable protection.

### **4 in 4 Out Inline Fiber Splice Enclosure, 192 Cores Splice**

---

Designed to safeguard fiber optic splices and joints, its outer shell is made of high-strength, durable plastic with lightweight construction, excellent mechanical



## Types of Fiber Optic Closures

---

Fiber optic splice closures are small boxes made of rugged plastics that hold some of the more sensitive areas of cabling and protect them from the elements. As fiber

## ETS Fiber Optic Distribution Box 2 Core

---

The box is engineered to simplify fiber management and ensure secure connections, making it an essential component in modern fiber optic networks. Built from high-strength ABS or PC+ABS

## Material Selection and Construction Precautions for

---

These materials have high strength, corrosion resistance, aging resistance, impact



resistance and other characteristics, and can ensure the

## **Choosing the Right Fiber Splice Enclosure for Outdoor**

---

Fiber splice enclosures come in various materials, each offering unique benefits. Polycarbonate and stainless steel are popular choices for their

## **What is the fiber optic splice enclosure?**

---

The fiber optic splice enclosure usually consists of a sturdy box or cabinet made of materials that are highly durable and resistant to harsh



## **24 Core Joint Box High Quality FTTX Fiber Splice Closure ONU**

---

24 Core Joint Box Fiber Optic Splice Closure, also known as a fiber optic junction box or optic joint closure, is a critical component designed for protecting.

## **Fiber Terminal Box vs Junction Box: Key Differences**

---

Compare fiber terminal box vs junction box in functions, applications, and installation. Learn which suits FTTH fiber vs electrical wiring.

## **2025 Guide to Fiber Optic Splice Enclosures for Extreme**

---

Ensure reliable networks in extreme weather with fiber optic splice enclosures. Learn about materials, weatherproof ratings, and installation tips for



## **IK10 100N IP68 288 Cable Fiber Optic Splice Closure**

---

Product Details The Clos-8A-192 fiber optic splice closure can accommodate up to 192 splicing points as an outdoor closure. It serves as a splicing point for feeder

## **Fiber Optic Termination Box vs. Fiber Optic Splicing Box**

---

Fiber optic termination and splicing boxes are the cornerstones of reliable networks, each excelling in distinct roles. Termination boxes offer

## **HTB8054 12-Core Indoor Fiber Optic Terminal Box - for**

---



HOLIGHTHTB8054 fiber terminal box supports 12 cores indoor FTTH distribution with SC adapters. Compact, durable design for easy cable

## **Fiber Optic Splice Boxes: Selection Criteria, and**

---

2. What factors should be considered when selecting a fiber optic splice box? Consider the type of fibers, environmental conditions (indoor vs. outdoor),

## **Desktop Fiber Optic Terminal Box , 1/2 SC Port FTTH**

---

Compact desktop fiber optic terminal box with 1 or 2 SC ports. Ideal for FTTH, office networks, and testing. Durable design with easy fiber termination.



## **Fiber Optic Splice Boxes: Selection Criteria, and**

---

At the core of this system's precision and reliability are Fiber Optic Splice Boxes--the unsung heroes that house and protect the delicate junctions where fiber cables

## **A Complete Guide to Fiber Optic Splice Closures: Installation and**

---

One crucial component in maintaining network integrity is the fiber optic splice closure. These enclosures play a vital role in protecting spliced fiber optic cables from environmental hazards

## **Buy LightMax® Fiber Optic Trays: 1U/2U/4U Models for**

---



View all products (5) Optical Fiber Pigtail Contact supplier LightMax® fiber optic cables Contact supplier High Density Solution for Fiber Optics Contact supplier Fiber optic jumpers with LC-SC-FC-ST

## **OptiTap® Compatible MST Box: 2026 Buyer's Guide**

---

Evaluate an OptiTap® compatible MST box for 2026 FTTH networks. Compare OEM vs third-party terminals, analyze IP68 risks, and avoid procurement mistakes.

## **Fiber Optic Splitters , PLC & FBT Optical Splitters**

---

Explore our comprehensive selection of high-performance fiber optic splitters. We offer a variety of PLC splitter types, including ABS box, LGX cassette, and rack



# How to Choose the Best Fiber Splicing Boxes: A Complete Buying Guide

---

When selecting the right fiber splicing boxes for your network infrastructure, prioritize durability, sealing performance, and compatibility with cable types and splice trays. The best choice

## Contact Us

---

For datasheets, pricing, or custom optical networking solutions, please visit:  
<https://www.entrenamientointeligente.es>