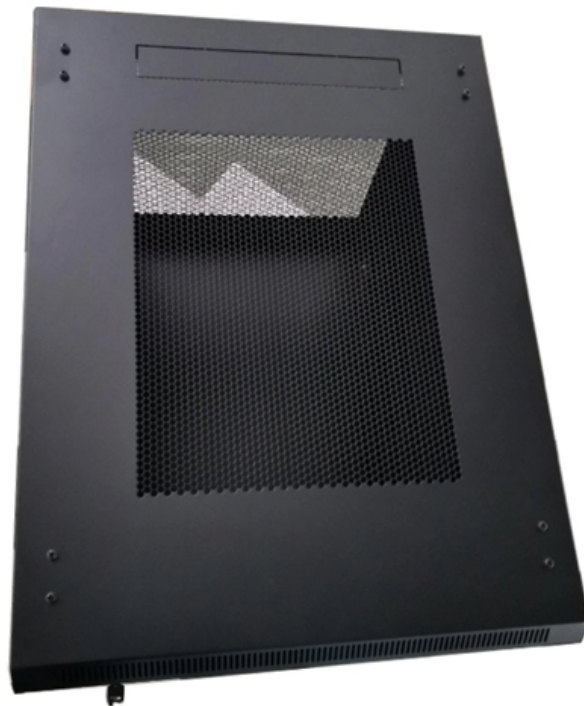


Are fiber optic switches typically mounted on top of TX





Are fiber optic switches typically mounted on top of TX

Choosing the Right Fiber Switch for Your Server Infrastructure

Explore the differences between single-mode and multimode fiber optics, understanding applications in data centers, and the importance of choosing the right cables for future-proofing your

Fiber Optic Patch Panel: 10 Best Options for 2025 Success

Discover the best fiber optic patch panel options for 2024. Learn how to choose, install, and maintain your fiber network for



Fiber TX/RX (in) correctly patched.

So if I plug in the Fiber, will the link led on the switch go to green if it's incorrectly patched, if no, then I immediately know it wrong and swap the TX/RX. I'm asking if the above is correct or not.

Security alarm

Wireless home alarm system control panel A house alarm A security alarm is a system designed to detect intrusions, such as unauthorized entry, into a building

All Kinds of Fiber Optic Patch Cords - SC, LC, FC, ST

Learn about SC, LC, FC, and ST fiber optic patch cords, their uses in FTTH, telecom, and data centers, and how to choose the right type.



All You Need To Know About Fiber Termination Boxes:

Source In this blog, we will discuss the two types of fiber optic cables and the role of a simple yet essential piece of equipment in the fiber laying

What is ToR (Top-of-Rack) Switching?

Learn about top-of-rack (ToR) switching, a network design that streamlines your data center. ToR switches reduce clutter, improve performance,

TR-3552: Optical network installation guide



Optical transceivers interface a network device motherboard (for a switch, router or similar device) to a fiber optic or unshielded twisted pair networking cable.

Where should the fibers be crossed ? : r/networking

Optical fiber shall be installed with odd numbered fibers having Position A at one end and Position B at the other. Even numbered fibers will have position A and B reversed from the odd numbered fibers.

Top of Rack VS End of Row: Which to Choose for Data

Each rack contains multiple computing devices. The top of rack architecture recommends network fiber switches should be placed in every rack



Fiber Optic Switches and Their Uses

Fiber Optic Switches and Their Uses Most of us are well aware of the use of fiber optics in local and wide area networks. These networks can be small, spanning relatively short distances (LANs) such

Why Your Fiber Link is Dead: The 2-Minute Fix for

Confused why your fiber links between switches won't come up? Learn the dead-simple truth about fiber polarity, Tx/Rx, and why just flipping the

Fiber Optic Patch Panel Types & Best Practices

Explore Fiber Optic Patch Panel Types, Rack-Mount & Wall-Mount Panels, Connectivity Options, Troubleshooting, Upgrades, and Best Practices.



Fiber Internet Installation Guide , BroadbandSearch

The fiber is threaded through and the hole is sealed around the cable with a wall plate installed on the interior side. Mounting the ONT: The fiber is

Fiber Patch Panels: A Beginner's Guide , RLH

Fiber optic patch panels are enclosures that act as a distribution hub for fiber cable. A bulk (multi-strand) fiber cable enters the patch panel and then each fiber strand

The FOA Reference For Fiber Optics



The numbers of fibers needed in any given cable depend on the number of switches being used, as each switch needs 2 fibers back to the main switch in the

Application Guide: Wiring Residential Buildings with

Both applications typically require an outdoor-rated enclosure with integrated coupler and single mode fiber optic cable terminated with a single mode fiber connector.

All you need to know about installing fiber to buildings

In practice, a fiber network has no limitations in transmission distance, and therefore, no connection rooms, switches and panels are needed on every floor or every building.



The FOA Reference For Fiber Optics

All fiber optic applications are not the same. At the FOA, we're mainly concerned with communications fiber optics - telco, CATV, LAN, industrial, etc., but fiber optics

Indoor vs. outdoor ONT: Where to does an optical

Indoor ONTs are installed inside your home, typically in a utility room, basement or another centralized spot. Outdoor ONTs are mounted outside your

Fiber Polarity: Everything you Need to Know

A fiber-optic link can function only if Tx on one end is connected to Rx on the other, and vice versa; this is accomplished by creating a fiber polarity flip



Unlocking the Power of Fiber Switches: A Comprehensive Guide to

Discover fiber switch advantages with fibermall. Unlock the potential of Ethernet and fiber optics in our comprehensive guide today!

Where to cross RX/TX line in fibre optical cabling

The trans-site multimode fibres are terminated with SC jacks on patch panels from where they are patched to the corresponding switch ports. In order to receive a working connection, the cables need

Fiber Optic Polarity 101: A-B Polarity



Leviton's Technical Service Reps often receive questions about ensuring proper polarity in fiber optic networks. So we thought we'd take some time to outline the

Fiber Optic Switch: A Comprehensive Guide

There are three main types of fiber optic switches: mechanical, solid-state, and acousto-optic. Each of these types has its own advantages and

Contact Us

For datasheets, pricing, or custom optical networking solutions, please visit:
<https://www.entrenamientointeligente.es>