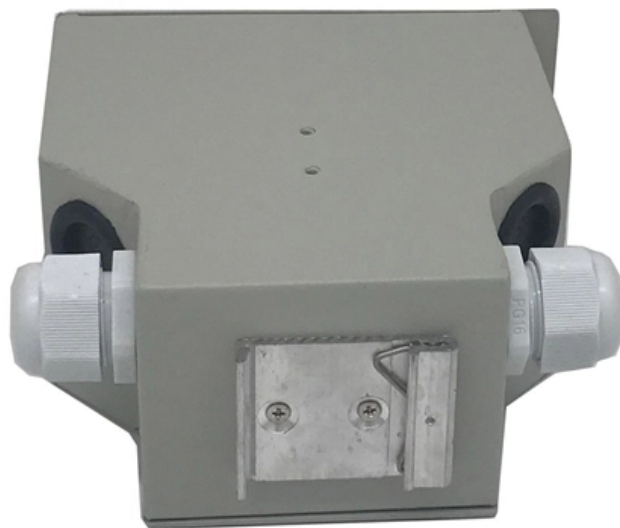


# **Cable tray cover plate 10**





## Cable tray cover plate 10

---

# Cable Tray Accessories, Cable Tray Hangers & Support , RS

---

Cable trays are components used in the wiring of buildings to support insulated cables and organise them to be hidden from view. They offer an alternative to open wiring or electrical conduit systems

## Cable Management Systems C

---

Available for all cable tray widths and material types, covers provide mechanical protection and should be installed where falling objects may damage cables or where vertical tray runs are accessible by



## Full cable tray systems specification document

---

All covers and splice plates must also be hot dip galvanized after fabrication; mill galvanized covers are not acceptable for hot dipped galvanized cable tray. All hot dip galvanized after fabrication steel

## High-quality cable tray covers at Ekabel.24

---

Optimum cable routing: Discover durable cable tray covers at Ekabel.24. Practical and reliable. Top prices! Top goods! Fast delivery!

## Tray Covers

---

EzyStrut offers a wide range of cable tray covers in durable pre galvanised or hot dip galvanised steel, to fit their comprehensive range of cable trays.



## High-quality cable tray covers at Ekabel.24

---

Whether you need cable trays with covers, galvanized systems, or matching lids -- our high-quality cable trays protect cables from dust, moisture, mechanical damage, and ensure optimal ventilation

## Cable Tray And Fittings , Graybar Store

---

A cable tray system is used to support insulated electrical cables used for power distribution, control, and communication. Cable trays are used as an alternative to open wiring or electrical conduit

## Technical Data Sheet Cable Tray System

---



Product description Newlec Cable tray is supplied in 3M Lengths as standard, and is supported by a fully integrated range of time saving fixings and complimentary fittings. Featuring a unique cross slot

## Cover with Checker Plate length 10 ft

---

Cable tray cover for the walkable BKRS cable tray system. The basic cover is strip galvanised, with additional aluminium chequer riveted on, sturdy and non-slip. When the cover is used under wind,

## Nonmetallic

---

Nonmetallic - Cable tray covers Covers Covers for straight sections Material thickness: 1/8" (3.18mm) Standard cover length: 120" (10 ft.) 1/4" (6.35mm) diameter stainless fasteners with flat washers



## **Cable Tray Fitting Accessories**

---

These cable tray fittings and accessories are essential for the seamless installation of an integrated cable management system, allowing for functions such as

## **Cable Trays and Accesories**

---

Cable Trays and Accessories are designed to meet most requeriments of cable and electrical wire installations and comply to local international standards of

## **GUIDE CABLE TRAYS TECHNICAL**

---

NEMA VE 1-2017 Specifies requirements for metal cable trays and associated fittings designed for use in accordance with the rules of Canadian Electrical Code, Part I and the National Electrical Code®



## Nonmetallic

---

Barriers are provided in 10 ft. lengths and supplied for field installation using 3/16" SS rivets (ref. part # TPDR) or use of an adjustable clamp ref. part # XXX (for 3, 4, 6 and 8" deep ladder tray).

## Cable Tray Technical Guide A practical guide to product selection and

---

**SOLID-BOTTOM CABLE TRAY** Providing additional cable protection, solid-bottom cable tray is sometimes preferred to support and protect numerous small instrumentation and control cables.



## **Cable Tray Accessories, Cable Tray Hangers & Support , RS**

---

These fittings are used in conjunction with cable trays to support cables in ventilation holes, assist with directional change of piping systems, and aid cable channelling around obstacles.

### **Cable tray branch-piece cover RAD 10S**

---

The cable ladder branch covers LADR are suitable for T-shaped cable ladder branches and protect them from external influences such as dirt and moisture. They are placed on top of the branches and also

### **Steel Cable Tray , Strong And Reliable Cable**

---

Steel Cable Tray Steel cable trays offer a practical and durable solution for cable management in industrial and commercial applications. Built from high-quality



## Contact Us

---

For datasheets, pricing, or custom optical networking solutions, please visit:  
<https://www.entrenamientointeligente.es>