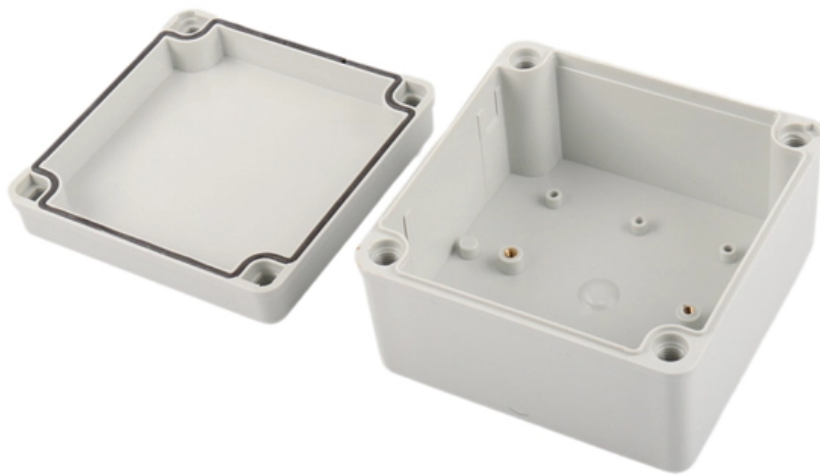


Cable tray hanger crossarm specifications





Overview

Galvanized crossarms for cable trays are typically made of Q235 low-carbon steel via rolling. All illustrations, descriptions and technical information included in this document are provided as indications and can cable trays are equivalent. The mechanical and electrical characteristics, tests, certifications, overall quality management, recommendations mentioned. When developing our cable support OBO can offer reliable solutions for systems, three attributes are at the routing and fastening cables securely core of what we do: efficiency, resili- for each of these installation challenge-ience and safety.



Cable tray hanger crossarm specifications

Guide to cable support systems

Four different mesh cable tray types are available, depending on the requirements, area of application and cable quantity. The innovative Magic connection system of the GRM and G-GRM mesh cable

GUIDE CABLE TRAYS TECHNICAL

NEMA VE 1-2017 Specifies requirements for metal cable trays and associated fittings designed for use in accordance with the rules of Canadian Electrical Code, Part I and the National Electrical Code®



The Ultimate Guide to Electrical Cross Arms for Power

Explore the world of electrical cross arms in this comprehensive guide covering types, materials, and applications. Learn how to choose the right cross arm

CABLE TRAY, CABLE LADDER, CABLE TRUNKING CATALOGUE

Length (W): 200. ng to tray height. Depth (D): 1.2mm, 1.5mm, Material: Mild steel sheet / PO steel sheet. Constructed Type: MIG welding. er coating / Hot ip galvanize / Bare galvan 4 Hanger Support.

Best Practice Guide to Cable Ladder and Cable Tray Systems

These guidelines will be particularly useful for the design, specification, procurement,



installation and maintenance of these systems. Cable ladder systems and cable tray systems are designed for use

Specification - LV Composite Cross-arms

This Specification details the requirements for manufacture, supply, testing and delivery of Composite Fibre cross-arms for use on overhead electricity distribution systems in an exposed environment.

Steel Cross Arm Assembly Specifications

This document outlines specifications for steel cross arm assemblies that are used in constructing medium voltage overhead power lines. It specifies requirements for



Comprehensive Guide to Electrical Cross Arms: Types,

Explore the world of electrical cross arms with our comprehensive guide. Discover various types, materials, and applications to optimize power line

Cablofil SCF400GS Pre-Galvanised Steel 400mm Cable Tray Central Hanger

Pre-galvanised steel central hanger for ceiling suspension of 400 mm cable trays. Provides reliable overhead mounting using M12 threaded rod in industrial cable support installations.

Galvanized Crossarms for Cable Trays: Analysis of Functions,

Galvanized crossarms for cable trays are typically made of Q235 low-carbon steel via



rolling. Their cross-sectional forms are mostly U-shaped or L-shaped, and their thickness is classified

Full cable tray systems specification document

The drawings which constitute a part of these specifications indicate the general route of the cable tray systems. Data presented on these drawings is as accurate as preliminary surveys and planning can

CABLE TRAY, CABLE LADDER, CABLE TRUNKING CATALOGUE

Cable Trunking. Straight sections of solid bottom cable trays constructed from single sheet of metal, providing excellent protection from external damage, they are used primarily for intrumental control,



Understanding Cross Arms in Electrical Systems: A Complete Guide

Cross arms are crucial components in electrical systems, providing structural support and facilitating the connection of overhead power lines

Crossarm Tool Hanger , M1860 , Hubbell Power Systems

The Crossarm Tool Hanger is made of strong, lightweight aluminum alloy and has cadmium-plated steel hardware. The Crossarm Tool Hanger is adjustable to crossarms ranging in width from 3.25 to 4.5

26 05 36 Cable Trays for Electrical Systems



EATON B-LINE SERIES GUIDE SPECIFICATION Section 26 05 36 - CABLE TRAYS FOR ELECTRICAL SYSTEMS 26 05 364/2025 Specifier Notes: This product guide specification is written

MP Husky Cable Tray Catalog.pdf

Standard cable tray fittings are no longer needed for elbows, tees and crosses. For safety and reliability, rungs are firmly attached by the four-point staking method.

SH181 CC vertical crossarm , MV Crossarms , Ensto

Set includes three 2 phase horizontal cross-arms which will be installed vertically to the same pole. Allowed loads for the crossarm at conductor fixing points are: $F_x =$



Cablofil SCF500GS Pre-Galvanised Steel 500mm Cable Tray Central Hanger

Pre-galvanised steel central hanger for ceiling suspension of 500 mm cable trays. Enables secure overhead mounting using M12 threaded rod for heavy cable tray installations.

A T& B Cable Tray Metallic cable tray

Introduction Cable tray wiring systems offer significant advantages over conduit pipe and other wiring systems. Cable tray is more cost efficient, more reliable, more adaptable to changing needs and

Technical Specification for Cable tray installation and cable laying work

1. Scope :- This specification covers the following major activities; - Fabrication and



installation of Mild Steel (MS) support structure for Galvanized Iron (GI) Cable tray. -
Installation of perforated GI Cable

<localhost:3000/specsheet/en/293631>

The Crossarm Tool Hanger is adjustable to crossarms ranging in width from 3.25 to 4.5 inches (depth of the crossarm does not matter). The Crossarm Tool Hanger is made of strong, lightweight aluminum

Cablofil SCF300GS Pre-Galvanised Steel 300mm Cable Tray Central Hanger

Pre-galvanised steel central hanger for secure ceiling suspension of 300mm cable trays. Enables overhead installation using M12 threaded rod and supports demanding indoor cable tray applications.



Cable Tray and Trunking Overview , PDF , Length

It provides details on the components of each system including straight sections, tees, elbows, reducers, and accessories. Each type of component is shown

Types Of Crossarms In Power Fittings And Detailed

1. aerial electrical fitting Gate cross arm The main raw material of the gate cross arm is equilateral angle steel, and its specifications are named

Cable Tray Technical Guide A practical guide to product selection and

Cable Tray Technical Guide A practical guide to product selection and installation This guide for engineers and installers has been developed by ABB as a practical reference



regarding cable tray

Server Rack Accessories

The APC AR8576 is a Ladder Hanger Kit and Cable Trough. It is a comprehensive selection of accessories designed to organize power or data cables within a rack

Cope Wire Basket Master Spec

Wire basket cable tray supports shall be center support hangers, trapeze hangers or wall brackets as manufactured by the Cope Cable Tray Division of Allied Tube & Conduit Corporation, [or engineer



2011 O-line Catalogue Revised

Trays GRIDSPAN comprises two ranges of wire mesh type, medium and heavy duty cable trays. GRIDSPAN provides maximum cable ventilation, limits dust build-up and is easily cut to size on site

Cablofil SCF200GS Pre-Galvanised Steel 200mm Cable Tray Central Hanger

Pre-galvanised steel central hanger for ceiling suspension of 200 mm cable trays. Designed for overhead installation using M12 threaded rod and rated for heavy duty cable tray loads.

Contact Us

For datasheets, pricing, or custom optical networking solutions, please visit:
<https://www.entrenamientointeligente.es>