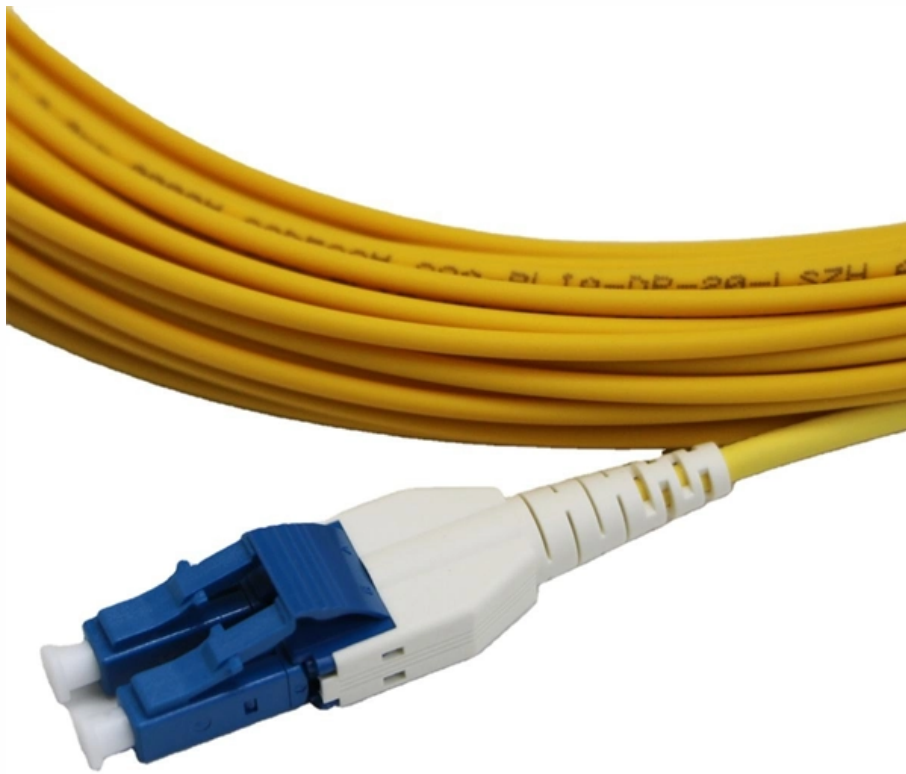


Can VLANs be created at the access layer of a switch





Can VLANs be created at the access layer of a switch

Virtual Local Area Networks (VLANs)

VLANs serve two major functions: splitting up one switch into smaller virtual-switches, and extending those virtual-switches to other physical switches.

What is a VLAN (Virtual LAN)?

A VLAN, like the LAN it sits atop, operates at Layer 2 of the network, the Ethernet level. VLANs partition a single switched network into a set of

VLANs Spanning Access Layer Switches



All documentation I read advises not to have a VLAN span across more than one Access layer switch, and they always add the *if possible to the end of that statement.

Cisco Catalyst 1200 Administration Guide

The creation of a VLAN allows you to create separate broadcast domains on a switch. The broadcast domains can communicate with one another via a Layer 3 device such as a router.

Virtual LAN (VLAN)

A Virtual LAN (VLAN) is a logical grouping of devices within a network that allows them to communicate as if they are on the same local network, even if



What is a virtual LAN (VLAN) and how does it work with

Adding virtual LAN (VLAN) support to a Layer 2 switch offers some of the benefits of both bridging and routing. Like a bridge, a VLAN switch forwards

Layer 2 VLAN Configuration on a Cisco Switch (with Example)

Access Link: Connects a VLAN-unaware end device (such as a PC) to a VLAN-aware switch. Frames transmitted over an access link are untagged and

VLANs Explained: What is a VLAN? , How Virtual LANs



Understand What is a VLANs and how virtual LANs help divide big switched networks into smaller, manageable networks with catchy examples.

How To Configure VLANs On the Catalyst Switches

Introduction VLAN stands for Virtual Local Area Network one physical cisco switch; you can create multiple VLANs that connect to different network. This document provides basic

How to Configure VLANs: Trunks and Access Ports

VLANs are created on switches, not routers. Trunk and access ports are only configured on switches, not routers. The router's only role with VLANs is



What is VLAN and how to a VLAN on a Cisco Switch

Devices on different VLAN's can communicate with a router or a Layer 3 switch. As each VLAN is its own subnet, a router or Layer 3 switch must be used to route

Configuring VLANs on Cisco Switches

Master configuring VLANs on Cisco switches. Learn to configure Access and Trunk ports, and Native VLANs and Allowed VLAN Lists. Learn to verify with show

VLAN Basic Concepts Explained with Examples

VLAN Basic Concepts Explained with Examples A VLAN is a logical grouping of network resources connected to administratively defined ports on a



What is a VLAN and how does it work?

For instance, a VLAN can be created to provide guest access on a Wi-Fi network, isolating contractors and other third parties to a subnet with limited

Managing Multiple Networks with Configuration Templates

Managing Multiple Networks with Configuration Templates Last updated Feb 19, 2026
[Save as PDF](#) [Table of contents](#) [Creating a Configuration Template](#)

What is VLAN and how it works

In the above diagram, one switch is supporting two virtual networks-two VLANs. The



users on VLAN-10 cannot access the devices on VLAN-20, and vice-versa. However, VLANs are entirely virtual. They

Routing Between VLANs & Layer 3 Switches

This will let us illustrate the concepts of inter-vlan routing, Router on a Stick (RoaS), and Layer 3 Switches (occasionally called MultiLayer Switches). Why do we need

Cisco Nexus 9000 Series NX-OS Layer 2 Switching Configuration

A VLAN interface, or switched virtual interface (SVI), is a Layer 3 interface that is created to provide communication between VLANs. In order to route traffic between VLANs, you must create



Understand VLAN Trunk Protocol (VTP)

Considerations: You can configure VLAN(s) without the VTP domain name configured on the switch which runs Cisco IOS®. If a new Catalyst is

Guide to VLANs: What They are, How They Work, and

How Does a Normal LAN Work? To understand what a VLAN is, you need to understand how a normal LAN really works. Devices on a switch

Cisco Packet Tracer: Setup a Three-Tier Switch Network

What you'll learn Understand and design a three-tier switch topology Configure Core, Distribution, and Access layers Set up VLANs, inter-VLAN routing, and HSRP for



Here's Why Your Network Might Need a Layer 3 Switch

Layer 3 switches are used in conjunction with traditional switches and network routers on some corporate networks, particularly those with VLANs.

How to Create VLAN , Switchport Mode Access

We still need to verify that, don't we? Switch#conf t Enter configuration commands, one per line. End with CNTL/Z. Switch (config)#interface Ethernet 0/2 Switch



Switching Architectures: VLANs

o This means that switches from different vendors are able to exchange VLAN traffic. Traffic between VLANs must now go through a router. VLANs! Cisco's Nexus switches run NX-OS not IOS and are

Contact Us

For datasheets, pricing, or custom optical networking solutions, please visit:
<https://www.entrenamientointeligente.es>