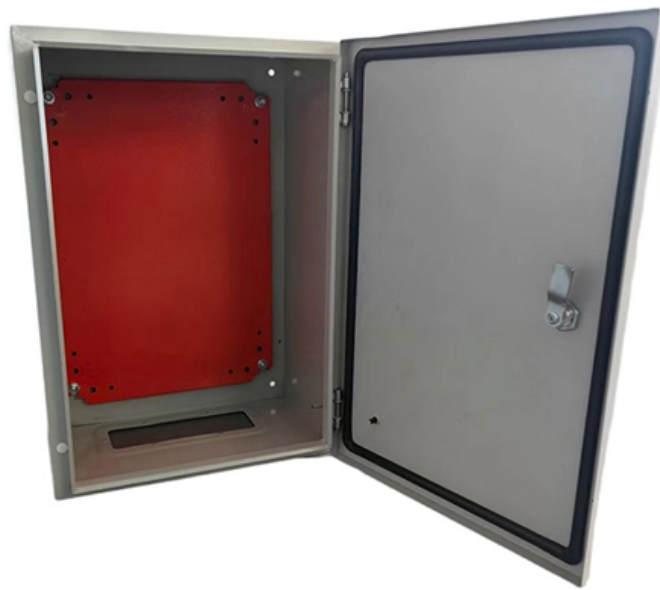


Central loose tube optical cable fiber optic cable





Central loose tube optical cable fiber optic cable

Lightera: Complete Fiber Optic and Connectivity Solutions

Leader in fiber optic and connectivity solutions, uniting Furukawa Electric's fiber and cable division, Furukawa Electric LatAm and OFS.

Understanding the difference between Ribbon and

The two major types of fiber cables, ribbon, and loose tube fiber cables have a lot of differences, let's understand the key features and applications



Central Loose Tube Fiber Cable

Outdoor optical fiber Central Loose Tube (jelly filled tube) cable with glass yarns as flexible non-metallic strength member, Single Polyethylene Jacket with Two Steel Wires Embedded, 6 Fibers Availability:

Fiber optic cable design: central and stranded loose tube cable

One can't imagine building cabling without fiber optic cables anymore. These cables are available in a huge variety of different designs. This issue focuses on central and stranded loose tube

Aerial Central Loose Tube Fiber Optic Cables , ETK Kablo

The central loose tube construction offers a compact yet high-fiber-capacity design that



simplifies installation and reduces material costs. Optical fibers are grouped within a single gel-filled tube,

Central Loose Tube Fiber Optic Cables

Description Central loose tube fiber optic cable contains one tube with 2 - 24 fibers, which is filled with water blocking gel. Either aramid yarn or fiber glass is wound

Central Loose Tube Fiber Optic Cables

Central loose tube cable contains one tube with 2 - 24 fibers, which is filled with water blocking gel. Either aramid yarn or fiber glass is wound around the tube to



Central Loose Tube Cable, Fiber Optic Cables

Central Loose Tube Fiber Optic Cables is characterized by light weight and small diameter, suitable for both aerial and duct installation. The cable can also be used for direct burial for armoured option.

Central Loose Tube Cable

Central loose tube cable contains one tube with 2 - 24 fibers, which is filled with water blocking gel. Either aramid yarn or fiber glass is wound around the tube to

Central Loose Tube Cables

Description Central loose tube cable contains one tube with 12 fiber ribbons, which is filled with water blocking gel. The fiber ribbon can be easily separated by hand



In-Depth Knowledge Of Loose Tube Fiber Optic Cables

In loose tube cables, the coated fiber "floats" within a rugged, abrasion resistant, oversized tube which is generally filled with optical gel. Since the tube does not have direct contact with the fiber, any cable

Central Loose Tube Fiber Cable

Belden's Central Loose Tube Fiber Cable support indoor/outdoor use--including conduit, direct burial, aerial and trunking. Built with 250 μm fibers (2-24 count),

Aerial Central Loose Tube Fiber Optic Cables , ETK Kablo



Central Loose Tube Fiber Optic Cables , High-Capacity Outdoor Optical Cabling for Backbone Networks ETK Kablo 's Central Loose Tube Fiber Optic Cables are engineered for high-performance data

Fiber optic cable design: central and stranded loose tube cable

In a central loose tube cable, the fibers (typically up to 12 or 24) are inside of one common, large tube. Stranded loose tube cables contain several tubes with typically up to 12 fibers

Basic but Important Information about Loose Tube Fiber

Between 1 and 12 optical fibers are placed in individual waterproof buffer tubes to insulate them from external forces and are usually twisted around



MiniXtend® Cable, LT, A-DQ (ZN)2Y 8x12 E9/125 SMF-28® Ultra

Corning MiniXtend products are fiber optic stranded loose tube or central tube fully dielectric outdoor cable typically used in Long-Haul, Metro- or Access Networks when limited space is available. With

Loose-Tube VS. Tight-Buffered Fiber Optic Cable

Although loose-tube fiber optical cables are used for high-fiber-count, long distance telco applications, they are an inferior design for LAN applications

Fiber Optic Cables in Detail: The Differences Between



Ribbon cables come in several construction types that are generally smaller than loose tube designs. OSP cables then have major variations of construction

Central Loose Tube Fiber Optic Cables: Empowering

Central Loose Tube Fiber Optic Cables are a type of optical cable designed to transmit data over long distances with exceptional speed and

Fiber-optic cable

A fiber-optic cable, also known as an optical-fiber cable, is an assembly similar to an electrical cable but containing one or more optical fibers that are used to carry



Central Loose Tube Fiber Cable

Factory Grade, Indoor/Outdoor, Central Loose-Tube, OS2, 12 Fibers, Gel Filled Tube 3.8mm, Aluminum Interlock Armor, Double Jacket - PVC, OFCR, Ozone-UV-Oil Resistant Availability:

Optical fibres are protected by cable constructions

Also the installation characteristics of optical fibres are under continuous development. A result of such development are cables with very flexible loose tubes. Learn more about our range of fibre optic

Central Loose Tube Optical Fiber Cable

Central Loose Tube Fiber Cables are ideal for indoor/outdoor applications, including use in conduit, direct burial, lashed aerial and trunking applications.



Central Loose Tube Fiber Cable

Universal (Indoor/Outdoor) optical fiber Central Loose Tube (jelly filled tube) cable with glass yarns (standard rodent protection) as strength member and Low Smoke Zero Halogen outer jacket.

Optical ground wire

An optical ground wire (also known as an OPGW or, in the IEEE standard, an optical fiber composite overhead ground wire) is a type of cable that is used in overhead power lines.

Contact Us

For datasheets, pricing, or custom optical networking solutions, please visit:
<https://www.entrenamientointeligente.es>