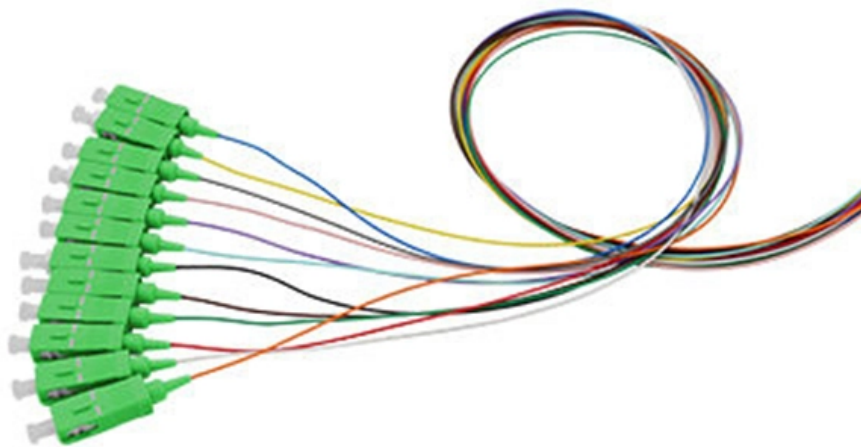


# **Check if the optical module is multimode or multi-mode**





## Overview

---

Additionally, observing the color of the optical module's pull tab is a straightforward way to check it. They might look almost identical from the outside, but knowing the difference is important. If you want to check SFP single mode or multimode, sometimes the info is easy to find on the product page or from the seller. Typically, single mode SFP modules are labeled as "SM" or "single mode," while multimode modules may be labeled as "MM" or "multimode. The distinction is important as it affects network performance, distance, and overall cost. I tried the " show fiber-ports optical-transceiver [interface interface-id]" command but get an error saying invalid input detected and points to "fiber" as not being a legit command. Whether you're designing a short-range data center network or a long-distance metro backbone, understanding the distinctions between single vs.



## Check if the optical module is multimode or multi-mode

---

### Multi-mode optical fiber

---

Multi-mode optical fiber is a type of optical fiber mostly used for communication over short distances, such as within a building or on a campus. Multi-mode links can

### How to Tell if My SFP is Single-Mode or Multimode?

---

Discover how to identify if your SFP (Small Form-factor Pluggable) module is single-mode or multimode. Look for SM or MM labels, check color coding, and consult manufacturer specs



## How to determine if an SFP on switch is single or

---

The bottom line here is the specific module you mentioned can use either single or multi. Looking at the cable is the only way to know. (or simply

## How to tell the difference between single mode and multimode fiber

---

When in doubt, checking the cable specifications, looking at the color, and knowing the intended application can help you identify whether a fiber optic cable is single-mode or multimode.

## The Key Differences Between 1-core, 2-core, Single

---

Understanding 1-core, 2-core, Single Mode, and Multi-mode optical modules helps you design efficient networks. Whether you're working on long



## **Optical Transceiver vs. Fiber Optic Module: What's the Difference**

---

Introduction Engineers, purchasing managers and installers often see the terms I-Transceiver, optical module and fiber optic module used interchangeably -- and that causes confusion. This article

## **Optical Module Solutions for Huawei S5700/S5720 Series Switches**

---

Check if the fiber and optical modules are compatible. Single-mode/multimode fibers and single-mode/multimode optical modules cannot be mixed. Perform a loopback test by connecting the



## What Is an SFP Optic Module and How Does It Work

---

SFP optic modules convert electrical to optical signals for fast, long-distance data transfer. Hot-swappable, versatile, and compatible with various

## Mastering Cisco Optics: Understanding TX/RX Light Levels

---

Stop guessing your fiber health. Discover how to use Cisco DOM commands to measure real-time TX/RX light levels and ensure your optical

## 2025 How to Identify Single-Mode vs. Multimode SFP Modules for

---

Learn how to identify single-mode and multimode SFP modules with our comprehensive guide. Explore SFP features, testing methods, and compatibility.



## **How to check sfp module is single mode or multimode?**

---

SFP modules are widely used for their flexibility and scalability in connecting network devices, but selecting the wrong type can lead to performance issues or failed connections. Below, we'll explore

## **Single Mode vs Multimode Fiber, What is The**

---

Learn the key differences between single mode vs multimode fiber cables and choose the right one for your fiber optic system.

## **Optical Transceiver vs. Fiber Optic Module: What's the Difference**

---



Introduction Engineers, purchasing managers and installers often see the terms transceiver, optical module and fiber optic module used interchangeably -- and that causes confusion. This article

## **What is SFP Port? Everything You Need to Know**

---

What is an SFP port? The SFP port also refers to a Small Form-factor Pluggable port. It is a compact mechanical slot that accepts an SFP module

## **How to distinguish whether an optical fiber module is single-mode or**

---

Correctly distinguishing single-mode and multi-mode optical modules is critical for matching fiber patch cords, ensuring transmission stability, and avoiding network failures. This article shares 4 practical



## 400G Sr4 Vs Dr4 Optical Transceivers: The difference between them

---

400G-SR4 vs 400G-DR4: SR4 multimode solutions are typically 50 m (400G SR) while DR4 single-mode options extend to 100 m or 500 m depending on the module family -- check the exact

## H!Fiber 10G Multimode SFP+ LC Module, 10GBase-SR Fiber

---

About this item 10GBase-SR SFP+: 10 Gigabit Ethernet Multimode SFP+ Module, 10 Gb/s, 850nm wavelength, Duplex Dual LC, MMF, operates on multi-mode (OM3/OM4) LC/UPC fiber cable spans of up to 300m (984 Ft) in length; 2 Pack Wide Compatible: Perfect for Cisco SFP-10G-SR, Meraki MA-SFP-10GB-SR,



## **optical transceiver sfp+ 10g single mode module 1310nm 10km lc**

---

Upgrade networks with our optical transceiver sfp+ 10g single mode module 1310nm 10km lc. This LC transceiver delivers effortless 10km connectivity for data centers and servers.

## **How to Check If My SFP Is Single Mode or Multimode**

---

Learn how to check SFP single mode or multimode, and choose the right fiber type and wavelength to keep your network stable.

## **The Difference Between Single/Dual Fiber and**

---

Whether you're designing a short-range data center network or a long-distance metro backbone, understanding the distinctions between single vs. dual



## **How to Differentiate Between Single-Mode and Multi**

---

Choosing between single-mode and multi-mode optical modules depends on the specific requirements of your network application, including

## **Single-Mode vs Multimode SFP Identification: 2026 Protocol**

---

Confused about whether your SFP is single-mode or multimode? Learn the differences, visual cues, wavelength ranges, and compatibility to avoid mismatched fiber connections and costly

**Learn how to choose the right SFP module for your**



## network. Avoid

---

Learn how to choose the right SFP module for your network and avoid common compatibility mistakes. This practical guide explains SR vs LR, singlemode vs multimode,

## Single Mode SFP Transceiver: Complete Guide Explained

---

Single Mode vs Multimode SFP Transceivers Understanding the difference between single mode SFP transceivers and multimode SFP transceivers is essential when designing or upgrading a fiber optic

### Contact Us

---

For datasheets, pricing, or custom optical networking solutions, please visit:  
<https://www.entrenamientointeligente.es>