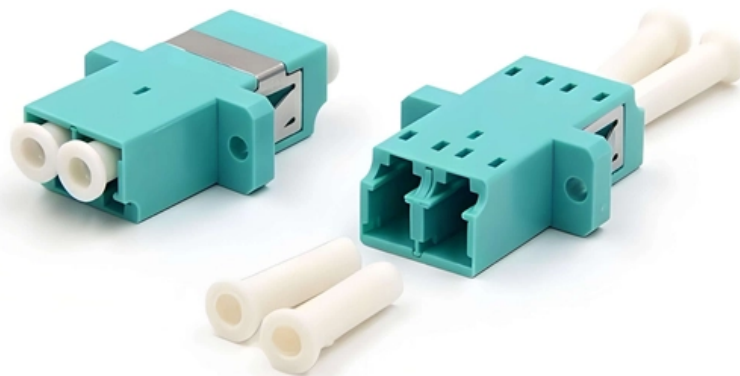


Common Hidden Dangers of Outdoor Secondary Distribution Boxes





Overview

An Electrical Outdoor Box that is not sealing properly or that shows signs of corrosion can allow moisture to reach connections, accelerating wear and increasing the chance of arcing or short circuits. Outdoor low-voltage power distribution boxes (hereinafter referred to as "distribution boxes") are low-voltage distribution equipment used in 380/220V power supply systems to receive and distribute electrical energy. However, in actual applications, distribution boxes often encounter a series of problems, which not.

Underground Dangers: Hidden cables can be damaged during digging landscaping or fence installation projects. These pad-mounted transformers are a fundamental part of the electrical grid, bridging the gap between high-voltage.



Common Hidden Dangers of Outdoor Secondary Distribution Boxes

11 Outdoor Wiring Safety Tips That Experts Never Tell

Look for telltale signs of electrical hazards in your outdoor wiring setup. Watch for sparking outlets frayed wires buzzing sounds or burning smells near electrical

5 Outdoor Power Outlet Box Mistakes Putting Your Home at Risk

We will reveal the five most common and dangerous mistakes homeowners make when installing or maintaining outdoor power outlet boxes. By highlighting these critical pitfalls, our goal is to help you



How to Avoid Common Pitfalls When Working with

One of the most common mistakes in working with exterior outlet boxes is improper installation. This can involve incorrect height placement, inadequate sealing from

Problems and Precautions in the Operation of Distribution Boxes

Outdoor low-voltage distribution boxes: essential equipment facing operational challenges like overheating & lightning damage. Learn practical solutions for improved reliability and safety.

What are the common problems of distribution boxes?



The main problems encountered with distribution boxes include installation and layout problems, electrical connection and grounding problems,

Understanding Distribution Boards: Your Essential Guide to Electrical

Understanding Distribution Boards: Your Essential Guide to Electrical Efficiency and Safety In today's fast-paced world, understanding your home's electrical system is more crucial than

Weatherproof Outdoor Distribution Boxes: Key Design Insights

Common weather threats: rain, dust, snow, sun, condensation Understanding the environmental factors that threaten outdoor electrical systems is essential for selecting appropriate distribution boxes.



Safety Around Electrical Boxes and Infrastructure

Electrical boxes, power lines, and substations are important parts of our distribution infrastructure. Learn about them and how to report open or damaged electrical equipment.

Is an Outdoor Electrical Box Safe?

Learn about the risks, warning signs, and safety measures for outdoor electrical boxes to ensure safe operation. Contact a professional

Are Green Electric Boxes Dangerous?

In this article, we go over are green electric boxes dangerous and why it is important to look into safety concerns for your electricity.



Can You Install a Breaker Box Outdoors?

Discover if you can install a breaker box outdoors and learn about safety, regulations, and expert advice to protect your electrical system from hazards.

Safety requirements of distribution box

The distribution box has the characteristics of small size, simple installation, special technical performance, fixed location, unique configuration function, not limited by

The Hidden Problem: Root Blockages in Distribution Boxes



The Hidden Problem: Root Blockages in Distribution Boxes: Root intrusion into the distribution box is a common but often unnoticed problem. Roots

The Meaning and Function of Primary, Secondary, and Tertiary

The terms primary, secondary, and tertiary distribution boxes are relative. Let's make an example for clarity: A newly constructed residential area introduces a 10kV power line to a substation. From the

Electrical Distribution Box Installation Mistakes

The Electrical Distribution Box is a very important part of the power system, improper installation will cause a lot of danger and loss. Here are some things that go



Tips for Maintaining Outdoor Power Boxes in Severe Weather

Rain, snow, and wind can damage it, making your electrical system unsafe. Ignoring maintenance raises the risk of problems with your outdoor power distribution box. These issues can

Is an Outdoor Electrical Box Safe?

Outdoor electrical boxes deliver power to homes and businesses via underground conduits, with power lines typically running overhead. Since these boxes are accessible to the public, improper handling

Exposed Wires: The Dos and Don'ts



We all know that if you see a fallen power line, you steer clear. But what about exposed wires in your home? Actually, it's not just wires you want to look out for.

Electric and magnetic fields from final distribution

Final distribution substations always comply with the public EMF exposure guidelines. Electric fields Electric fields are very easily shielded and any final

The Hidden Dangers Of Ignoring A Clogged Septic Tank

The hidden nature of these issues makes them even more dangerous. Many problems go unnoticed until they're too advanced. As explained



Is an Outdoor Electrical Box Safe?

While rainfall is limited, understanding outdoor electrical box safety is still essential. Though convenient and generally safe, improper use of outdoor electrical boxes can lead to serious injury.

How Safe Is That Outdoor Transformer Box?

Get the facts on neighborhood transformer boxes: their essential purpose, hidden high-voltage dangers, and strict homeowner clearance rules.

Could an Electrical Outdoor Box Pose Hidden Home Dangers

Learn the warning signs of a failing Electrical Outdoor Box, what homeowners should inspect, and when to call a licensed professional for safe repairs.



Safety Concerns To Consider With That Unsightly

Transformer boxes serve a critical function in neighborhoods, but having one in your backyard can pose safety issues -- here's how to keep your

What Is an Electrical Distribution Box? A Complete Guide

An electrical distribution box routes power, prevents overloads, and keeps wiring organised--essential for safe, efficient home and industrial setups!

Contact Us

For datasheets, pricing, or custom optical networking solutions, please visit:
<https://www.entrenamientointeligente.es>