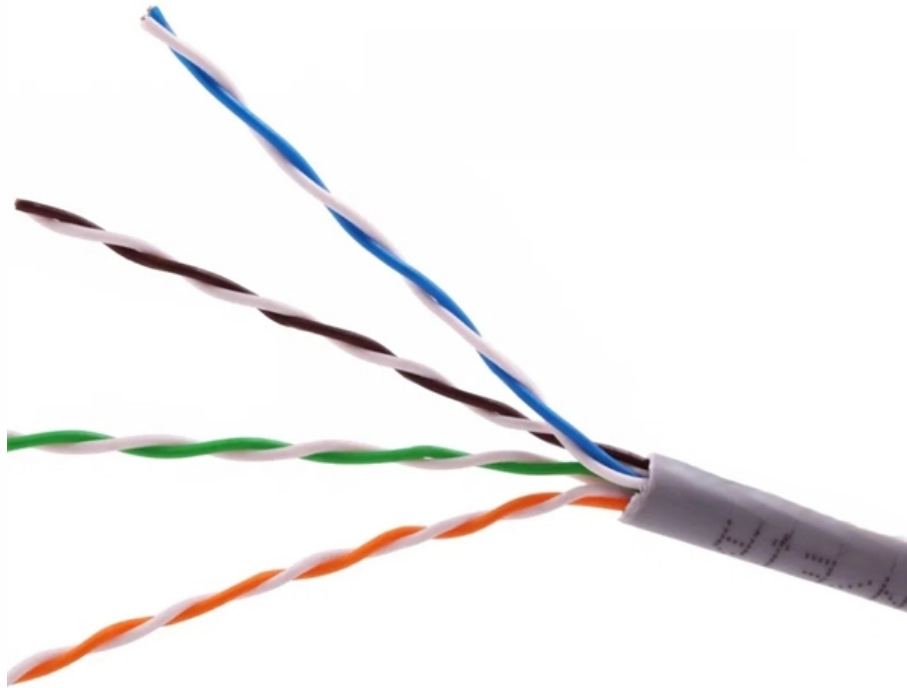




EIT Opto-Routing

Complete List of Cable Tray Material Specifications





Complete List of Cable Tray Material Specifications

26 05 36 Cable Trays for Electrical Systems

If cable trays are sized for future cables, specify provisions for penetrations with sleeves through fire-rated partitions or use "repairable" firestop-sealing material.

Cable Tray and Ladder Components List

The document is a bill of materials that lists 35 items and their descriptions. It includes straight cable ladders, trays, and accessories like elbows, tees, crosses,

Material Selection Guide for Cable Tray, Metallic



Tray

This article is about Material Selection Guide for Cable Tray, Metallic Tray Systems for commercial buildings, plants and refinery projects as per international codes

Cable Trays Selection Guide: Types, Features,

Cable trays are components of support systems for power and communications cables and wires. A cable tray system supports and protects both power and

CABLE TRAY

All illustrations, drawings and descriptive material in this publication are of a generally informative nature only, and do not form a complete package of the specifications or description of the goods.



Microsoft Word

3.0 TECHNICAL REQUIREMENTS 3.1 Cable trays & accessories shall be of two types, namely ladder type and perforated type. Technical particulars are specified in data Sheet-A and drawings enclosed

Type of Cable Tray

Cable Tray Materials: Most cable tray systems are fabricated from a corrosion-resistant metal (low-carbon steel, stainless steel or an aluminium alloy) or from a metal with a corrosion-resistant finish

Cable Tray Systems: Requirements and Best Practices



Comprehensive guide to cable tray systems requirements: tray types, materials, loading, supports, bonding, routing, and best practices for safe electrical cable management.

FRP Perforated Cable Tray Specifications

Standard tray sizes range from 50x25mm to 300x75mm with lengths of 3 meters. The trays have a cover thickness of 1.5mm and standard gray color. Coupler

cable tray technical specifications

The European standard that lists the chemical composition of stainless steels which are subdivided in accordance with their main properties into corrosion resisting steels, heat resisting steels and creep



LEGRAND CABLE TRAYS TECHNICAL GUIDE

Not all cable trays are equivalent. The mechanical and electrical characteristics, tests, certifications, overall quality management, recommendations mentioned in this technical guide only apply to our

B-Line series Cable Tray Design Considerations

As an industry leader in cable tray, Eaton offers one of the widest ranges of cable management solutions available in the market today with its B-Line series portfolio. With unmatched quality and service, we

Full cable tray systems specification document

The work covered under this section consists of the furnishing of all necessary labor, supervision, materials, equipment, tests and services to install complete cable tray systems as shown on the



Cable Tray Width, Dimensions and Specifications as per

Learn about cable tray width dimensions and specifications as per NEC standards. Understand types, sizes, materials, and installation guidelines for safe and

Ultimate Guide to Cable Tray Selection - Types,

Learn how to choose the best cable tray system for your needs. Explore types, materials, installation tips, and NEC compliance in this expert guide.

Selecting the right materials for cable tray use at



low temperatures

Selecting the right materials for cable tray use at low temperatures From the freezing cold of Antarctica to the frigid pipelines of Alaska, reliable power and communications demand properly supported

Technical Specification for Cable tray installation and cable laying work

1. Scope :- This specification covers the following major activities; - Fabrication and installation of Mild Steel (MS) support structure for Galvanized Iron (GI) Cable tray. - Installation of perforated GI Cable

CABLE TRAY, CABLE LADDER, CABLE TRUNKING CATALOGUE

Cable Ladder. Straightsections of ladder type cable trays consist of two longitudinal



side rails, connected by individual transverse, or rungs, which are welded to the side rails or bolted in case of GI

CABLE TRAY SYSTEM

ICMS cable tray system including Fittings and accessories is manufactured With return flange in a standard length of 2.44Mtr and 3 Mtr, according to the following Specifications and standards:

Cable Tray List Essentials: Materials, Sizes, and Capacities

A detailed cable tray list is essential to identify necessary materials and specifications. The tray must accommodate the size, weight, and type of cable being used.



LEGRAND CABLE TRAYS TECHNICAL GUIDE

In accordance with its continuous improvement policy, Legrand reserves the right to change the specifications and illustrations without notice. All illustrations, descriptions and technical information

GUIDE CABLE TRAYS TECHNICAL

NEMA VE 1-2017 Specifies requirements for metal cable trays and associated fittings designed for use in accordance with the rules of Canadian Electrical Code, Part I and the National Electrical Code®

Cable Tray List Essentials: Materials, Sizes, and Capacities

Optimize infrastructure projects by leveraging a detailed cable tray list with insights on



load capacities and standard sizes.

cable tray technical specifications

Armorduct cable tray systems are usually assembled using M6 roofing bolts particularly for couplers, fishplates and connection to supporting framework. It should be noted that independent testing has

Cable Tray Technical Guide A practical guide to product selection and

Cable tray is considered to be a system. It must provide continuous support for cables, and the electrical continuity of the cable tray system must be maintained.



CABLE TRAY SYSTEMS GUIDE

Hubbell's NEXTFRAME® Ladder Tray is the effective and widely used cable runway that supports and delivers bundles of cable between cabinets, racks, and closets, along walls, and suspended from

Cable Tray and its types & Sizes

A cable tray is a type of a containment used to support insulated electrical cables used for power distribution, control, and communication.

Cable tray manual

INTRODUCTION The B-Line series Cable Tray Manual was produced by our technical staff. We recognize the need for a complete cable tray reference source for electrical engineers and designers.



Cable Tray Types and Sizes

Explore various cable tray types and sizes for electrical installations. Learn about ladder, perforated, solid-bottom, wire mesh, and channel trays in this complete

Contact Us

For datasheets, pricing, or custom optical networking solutions, please visit:
<https://www.entrenamientointeligente.es>