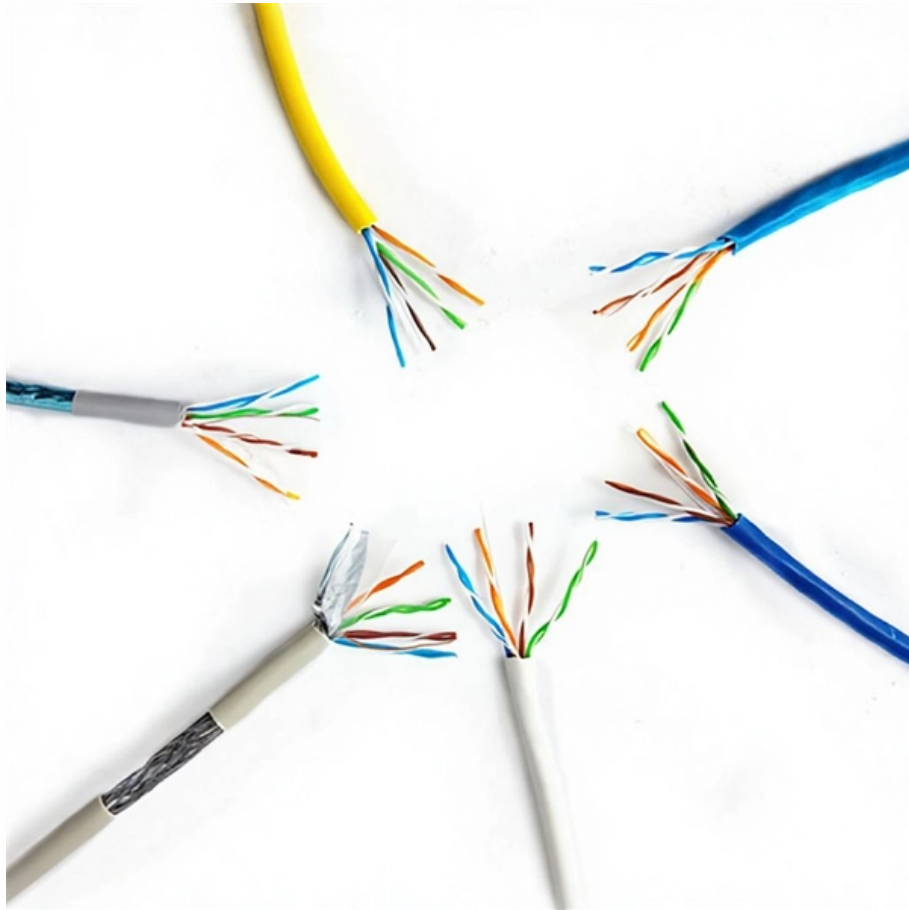


Construction Site Dedicated Climbing Cable Tray





Construction Site Dedicated Climbing Cable Tray

The Comprehensive Guide to Cable Tray Systems:

Master cable tray systems with our expert guide covering structural engineering, material selection, and NEC compliance to ensure safe, efficient,

Important design considerations for cable ladder and

In the second of this two-part series, Paul Chaffers, Technical Events Manager and Technical Author of NAPIT On-site Solutions, takes a closer look at



Important design considerations for cable ladder and

Fig 2 shows an example of a steel wire cable tray/basket arrangement with a range of accessories available for site alterations to allow for installation in

Ladder Type Cable Tray

Ladder Type Cable Tray Laddertype cable tray systems consists of two longitudinal side members connected by individual transverse members, and is designed for

Cable Tray Systems: Requirements and Best Practices

This article explains the main requirements and good practices for cable tray systems, including tray types, materials, loading, supports, bonding, cable selection, and installation details.



Understanding Cable Pathways, Cable Conduits, Cable

A cable pathway or raceway is a protective channel or enclosure made of materials like metal or plastic, used to manage and safeguard electrical cables and wires. It

CABLE TRAYS GENERAL INFORMATION AND

Using cable trays as walkways can cause personal injury and also damage cable tray and installed cables. Performances of cable tray systems are dependent on

Enhancing Workplace Safety with Cable Trays ,



Reducing Hazards

Improve workplace safety by reducing hazards and accidents with the installation of cable trays. Learn about the benefits, best practices for installation, and maintenance tips that can help

METHOD STATEMENT FOR CABLE TRAY INSTALLATION

In case of discrepancy of cable tray layout against site conditions, shall be informed for final disposition. 7.1.5 Install cable tray as per latest issued Approved for Construction drawing.

How Ladder Cable Trays Meet the Structural Demands

In high-rise construction, cable trays must meet specific load-bearing requirements to



support heavy cable loads across multiple floors. This article

Method Statement installation of Cable Trays and Ladders

This method statement covers the site installation of the cable tray & ladders and the requirements of checks to be carried out.

Master Cable Tray Installation: A Professional Step-by

Learn how to install cable trays for large-scale projects with our professional, step-by-step guide covering industry standards, safety protocols,



Complete cable tray manual for electrical engineers and

The final drawings for a cable tray wiring system may be completed and sent out for bid or construction more quickly than for a conduit wiring system. Cable trays

CABLE TRAY SYSTEMS GUIDE

Steel Ladder System Hubbell's NEXTFRAME® Ladder Tray is the effective and widely used cable runway that supports and delivers bundles of cable between cabinets, racks, and closets, along

Cable Tray Technical Guide A practical guide to product selection and

Cable tray is considered to be a system. It must provide continuous support for cables,



and the electrical continuity of the cable tray system must be maintained.

cable tray solutions For tunnels guide

With cablofil it is very easy to create horizontal and vertical configurations which fit the curvature of the underground infrastructure perfectly, and a significant amount of time is saved when creating

Metal Cable Tray Installation Guidelines , Cable Tray Institute

The Cable Tray Institute is making available the current edition of this practical guide for the proper installation of aluminum or steel cable tray systems. These guidelines will be useful to engineers,



Cable Tray Systems: Requirements and Best Practices

Comprehensive guide to cable tray systems requirements: tray types, materials, loading, supports, bonding, routing, and best practices for safe electrical cable management.

Cable Tray Trunking & Ladder Installation Method for

Resources For Electrical & Electronic Engineers Cable Tray Trunking & Ladder Installation Method for Projects The purpose of this article is to define the

Cable Tray Installation Method Statement

The document provides guidelines for installing cable trays and accessories. It outlines 15 steps for the installation process including preparing cable tray



Method Statement for Installation of Cable Tray or Trunking

Provide sufficient space around cable tray for access. Cable Support System Use fish plate to joint & align cable tray where cable tray passes through

B-Line series Cable Tray Design Considerations

Cable tray must be capable of supporting not just the weight of the cable, but also the weight of any equipment or materials attached to the cable tray. Additionally, dynamic environmental elements

B-Line series Cable Tray Design Considerations



As an industry leader in cable tray, Eaton offers one of the widest ranges of cable management solutions available in the market today with its B-Line series portfolio. With unmatched quality and service, we

Cable Tray Support Solutions: Safety, Compliance,

Learn how PHP Systems/Design uses the strength-stiffness ratio to create durable cable tray solutions, ensuring safety and reliability.

Cable Tray Types and Sizes

What is Cable Tray Systems? An electrical cable tray is a type of containment system used to support insulated electrical cables for power distribution, control,



Contact Us

For datasheets, pricing, or custom optical networking solutions, please visit:
<https://www.entrenamientointeligente.es>