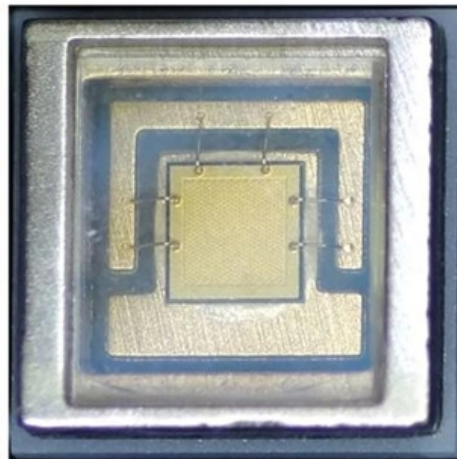


Construction Site Electrical Distribution Box Numbering Table





Construction Site Electrical Distribution Box Numbering Table

Electrical safety on construction sites

56 Temporary electrical distribution systems may be needed on construction sites. Their temporary status does not mean that lower standards are acceptable as these systems are likely to be

Symbols for Electrical Construction Drawings

In this publication, the term "electrical" is used to include electrical, electronic, and communications systems covered by the National Electrical Code (NFPA 70). This publication also summarizes



DB BOX(Electrical Distribution Box): Everything You

Learn everything you need to know about the Electrical Distribution Box (DB Box). Explore types, materials, installation tips, etc.

The National Electrical Code (NEC) , NECA

The NEC, approved by ANSI and sponsored by NFPA, sets electrical safety standards globally. NECA is a leading voice in its development.

Electrical Panel Schedule Template - Free NEC

An electrical panel schedule is a structured table that lists every circuit in a panel, its load type, rating, phase assignment, and related details. It's



Distribution Board Design: Standards, Surge Protection

Discover the essentials of distribution board design to enhance electrical safety and efficiency in your projects. Read more in our informative blog

Electrical Numbering System (Standardised) -

Distribution Board P730E, circuit 11, sequential identification number L2 = Fitting number E/11/L2 8.3 Lighting Junction Boxes and Switches shall be numbered

Electrical Equipment Numbering System in Buildings, Plants and



The following numbering system shall be used for major electrical equipment in the primary power distribution system, power supplies to process equipment, emergency

Basics of power system design

The function of the electric power distribution system in a building or an installation site is to receive power at one or more supply points and to deliver it to the lighting loads, motors and all other

16 Divisions

The 16 Divisions of construction, as defined by the Construction Specifications Institute (CSI)'s MasterFormat, is the most widely used standard for organizing specifications and other written



Electrical Numbering System (Standardised) -

For lighting and small power supplies that are taken from a distribution board, run in armored cable, and scheduled, the cable numbers shall be formed from the

APPENDIX 9B Standard Drawings for Electrical Design

When an electrical distribution system is too large to be shown on a single drawing, the major components and feeders should be shown on a single drawing. Additional one-line diagrams should

ENERGYBOX Assemblies for Construction Sites (ACS)

The panels are made in a sturdy and handy two-component technopolymer cabinet with



a fire-resistant backrest, which allows them to be stored and reused in the

The installation requirements for the distribution box

A distribution box is the heart of any electrical system. It takes the incoming power and safely distributes it to different circuits throughout your

Key Points Of Installation And Collocation Of Distribution Box In

1. The power distribution system at the construction site shall be distributed in different levels. The main distribution box (or distribution room) shall be set up. The distribution box shall be set



NECA 100 Electrical Construction Drawing Symbols

NECA 100 standard for electrical construction drawings. Includes symbols for wiring, lighting, outlets, fire alarms, and communication systems.

Electrical Distribution Fundamentals Design Guide Data Bulletin

It is assumed that the reader has a degree in electrical power engineering or electrical power engineering technology, however the following discussion is presented as a review and

Specifications for Electrical Underground Residential Distribution



Specification DDS-2 Revision 14, February 2023 ONCOR ELECTRIC DELIVERY COMPANY
SPECIFICATIONS FOR ELECTRICAL UNDERGROUND RESIDENTIAL DISTRIBUTION
SYSTEMS

Electrical Power Distribution: Part 2 Drawings, Symbols & Studies

This information provides a foundation to understand electrical power distribution systems, the types of information that can be found on electrical drawings, and studies that are used to confirm proper

Electrical Equipment Numbering Guide

It details the formats for major and minor electrical equipment, substations, communication systems, and fire alarm equipment, along with examples of



Electrical

Number each single pole space: Odd-numbered circuits on left side or top, even on right side or bottom. Securely mount on inside face of panelboard door. When no cover, provide individual nameplates for

Symbols for Electrical Construction Drawings

This publication describes graphic symbols used to represent electrical wiring and equipment on construction drawings. In this publication, the term "electrical" is used to include electrical, electronic,

Electrical Identification

The purpose of this standard is to establish consistency in the naming of components in



the electrical distribution system and to allow flexibility in obtaining maintenance history information.

Electrical

Buses and connections shall be identified left to right, top to bottom, or front to rear; shall read A-B-C; and shall be color-coded per the table above. Feeders for all new construction shall have color

How to (Quickly) Label A Home Electrical Panel Directory

Label a home electrical panel in 8 simple & easy steps. It's how we mapped our house's circuit breaker directory (it was a complete mess!)



Contact Us

For datasheets, pricing, or custom optical networking solutions, please visit:
<https://www.entrenamientointeligente.es>