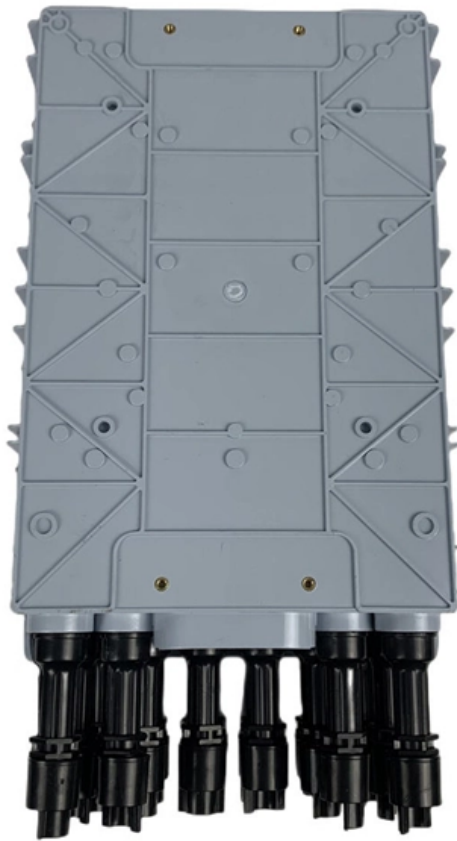


Diameter of communication tower mast





Overview

, structures called masts are typically relatively small, un-guyed structures, while larger structures, whether guyed or un-guyed, are referred to as towers.



Diameter of communication tower mast

Telecom Mast & Tower Installation Guidelines

Technical guidelines for telecommunications mast and tower installation, covering design, construction, maintenance, and environmental safety.

Towers, Masts, and Poles Specifications

Find Towers, Masts, and Poles on GlobalSpec by specifications. Towers, masts and poles elevate, support and/or position personnel and equipment such as antennas, lighting, surveillance cameras or



Telecommunication Mast Feasibility Report

The document discusses the history and types of communication masts. It details how communication masts have evolved over time from early telegraph towers to

Eurocode Telecom Tower Design: Complete Guide to

This blog will take a deep look into Eurocode telecom tower design. You will understand standards, structural considerations, and practical guidelines

Towers and Masts Guidelines for Telecommunication

Explore comprehensive guidelines on towers and masts, covering design, safety, and regulatory compliance to ensure optimal performance.



Telecommunications Mast Installation Guide , PDF

This document outlines technical specifications for the installation of telecommunications masts and towers. It discusses general principles such as

How Tall Is A Communication Tower?

These towers play a crucial role in facilitating wireless communication, broadcasting, and other forms of signal transmission. One of the

Everything You Need to Know About Cell Masts: Types, Functions, and

Discover the types, functions, and future trends of cell masts and telecom towers--from



5G integration to AI-powered smart masts. Learn how

TOWERS AND MASTS

This document presents the three most common types of towers/masts that are used today in wireless communication; self-supporting tower, monopole and guyed mast².

Telecom tower Requirements_R2

The bottom diameter/width should not exceed 1800mm and the top diameter / width should not exceed 600mm. Ø The pipes shall be tapered to ensure that one pipe base fits into the top of another until



Understanding the Role of Cellular Mast in Modern Communication

As mobile connectivity becomes indispensable in modern life, cellular masts (also known as telecom towers) are at the heart of this infrastructure. These towering structures enable mobile networks to

Design of Communication Tower and Its Performance

CERTIFICATION OF APPROVAL Design of Communication Tower and Its Performance By Hasmira Binti Sumbiar A project dissertation submitted to the Civil Engineering Programme

Antenna Masts: Safety and Selection

Nearly every amateur who contemplates a tower will need to include a mast to support



his or her antenna -- or antennas. While some hams simply mount their beams on the side rails (the vertical

Mast Guide BCM90204-V6

This air transportable mast consists of 5 x 2 metre aluminium sections with a 0.85m antenna support outrigger on the top section. There are 2 sets of 3 stainless steel guy wires and one back-stay guy

Legal-Guidelines Technical Specifications for the Installation of

Mild Steel Base Plate Figure 2.27 Design for lightweight mast in normal soil Foundation design for one leg in a three or four legged tower configuration. This is a galvanised steel tower



Communications GSM lattice tower design , 4 legged

Inquire Now: GSM, BTS cellular phone steel tower/pole/mast Telecommunication tower/pole/mast Radio tower/pole/mast Microwave

Types of Communication Tower in Telecom

7.1 Wind Measurement Tower: A structure (often a guyed mast) equipped with instruments to measure wind speed and direction. 7.3 Light

Mast vs. Tower -- What's the Difference?

Mast vs. Tower -- What's the Difference? By Urooj Arif & Fiza Rafique -- Updated on April 8, 2024 A mast is a vertical structure for supporting sails,



Communication Tower Design Guidelines , PDF

The document discusses communication tower design, including structural analysis models used for steel tower design. It covers foundation design to resist loads,

Types of Communication Towers & Their Maintenance Explained

Discover the different types of communication towers, including guyed, monopole, lattice, and stealth towers. Learn how Pittsburg Tank & Tower Group ensures proper design, installation, and

Mast Guide BCM90204-V6



Cleat detail sections with a 0.5m, 50mm diameter, vertical top section. There are 2 sets of 3 guy ropes. Erection of the mast requires a minimum of two people. All sections are to be assembled as shown

Contact Us

For datasheets, pricing, or custom optical networking solutions, please visit:
<https://www.entrenamientointeligente.es>