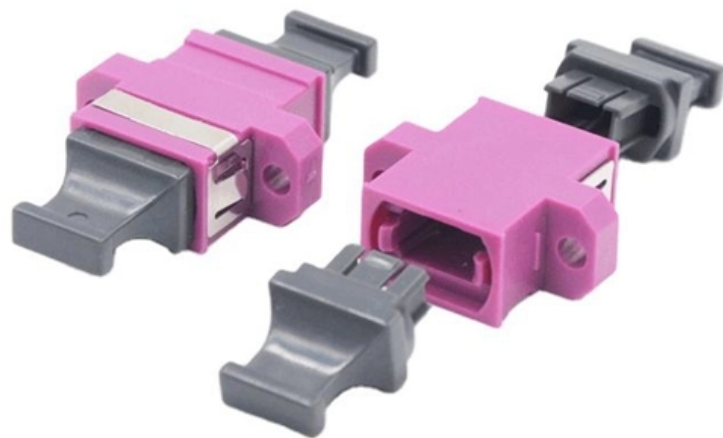


Dimensions and parameters of integrated power supply cabinets for power systems





Dimensions and parameters of integrated power supply cabinets fo

Cabinet Type AC DA Power Supply Module System , HT InfinitePower

The integrated photovoltaic and storage cabinet is connected to batteries, photovoltaics or other DC sources, and converted to AC power through AC/DC power modules to power local loads.

Distribution cabinet

The Protect Integrated power distribution cabinet integrates the power supply and distribution system of the server room (ATS/MCCB, air conditioning distribution, lighting distribution, UPS power supply,



HT Series Solar & Energy Storage PCS Cabinet

The following are the typical configuration parameters of the HT series of integrated Solar & Energy Storage System. The actual supply shall be subject to the technical agreement

Power system cabinet

We offer full customization of cabinet dimensions, internal layouts, cutout positions, structural reinforcements, and surface coatings to perfectly match your site needs.

Power Distribution Cabinet - Types, Functions & Uses

Why Power Distribution Cabinets Are Essential Without a proper distribution cabinet,



power networks are vulnerable to faults, outages, and safety

Industrial electrical cabinets and technical parameters

Electrical cabinets are an indispensable part in any industrial or civil project, from power plants to transformer stations, transmission and distribution

Custom Power Supply Cabinets , Riteoptic

Integrated Power Supply for Micro Station Riteoptic integrated power system is a miniaturized power outdoor cabinet system for the communications industry. The



Power Distribution Cabinets: Centralized Solutions for

Explore the critical role of Power Distribution Cabinets (PDCs) in modern electrical systems. Learn about their evolution, centralized power

Detailed Explanation of the Composition and Function of Various

The power supply system is used to step down the high voltage through the transformer to the voltage level required by the user, and is equipped with an indoor integrated system that

Integrated Power and Control Systems , Schneider

Integrated Power and Control Solutions: A better approach When you choose Square D(TM) Integrated Power and Control Solutions (IPaCS), you can optimize



Eltek Flatpack2 Integrated

The compact size of the system makes it perfect for use in 19" wide racks and cabinets. Built as a plug-and-play system, the Flatpack2 reduces installation time

Cabinet design and EMC

To ensure that the cabinet unit functions satisfactorily in the system, the environment subject to interference must not be neglected. For this reason, special requirements exist regarding the

Choosing the Right Power Distribution Cabinet for Your Electrical Needs



Discover the importance of selecting the right power distribution cabinet for system reliability, efficiency, and compliance with industry standards. Learn about critical features, material

APS_DC_Cabinets_Datasheet

All cabinets are made using 15kW or 30kW master DC supply or Load and parallel connected 15kW or 30kW slave units. The masters controls the entire system for ease of operation.

DC power supply cabinet working principle and role

DC power supply cabinet is referred to as DC cabinet, its role to provide stable DC power supply to power-using equipment, a power distribution



Guide to PLC Cabinets: Types, Layout, Wiring

Cabinet Size and Layout Next, plan the physical space for your cabinet. Measure the dimensions of all components, including the PLC, I/O

Alpha® FPE Enclosure Fibernode power cabinet with integrated fiber

The Alpha FPE enclosure series is flexible and provides modular expandability for Cable TV powering applications. The FPE enclosure is designed for the Alpha® XM3.1-HPTM broadband uninterruptible

Enclosures for control and automation



The IS modular cabinets are ABB SACE's main product line and allow construction of medium and large sized electrical panel boards for control, instrumentation and automation, with the possibility of

General Technical Requirements for Power Cabinet

The article introduces the design requirements and standards of Anstorm power cabinets. Including the use environment, dimensions and tolerances, steel requirements, structural

General Technical Requirements for Power Cabinet

The article introduces the design requirements and standards of Anstorm power cabinets. Including the use environment, dimensions and



Cabinet Power Distribution Units (PDUs) for Data

Cabinet Power Distribution Units (PDUs) are a type of PDU that is specifically designed to be mounted in a server cabinet or enclosure to provide power

Integrated power assemblies (e-houses) design guide

Based on these design parameters and calculations, walls, roof and ceiling panels can be constructed of materials up to 12 gauge and in some cases, 11-gauge G90 steel, all manufactured to ASTM A653

Control Cabinets and Components

Control cabinets are vertical enclosures with servo drives and other electromechanical components that control or monitor machinery and factory systems associated with it.



The control cabinet is a

Heavy Duty Rack Enclosures and Power Supply

Heavy duty welded cabinet enclosures made in the USA for rack-mount power and test and measurement equipment. Flexible options and sizes, trusted by

Cooper EPM precision distribution cabinets

ECM precision power distribution monitoring system is used for the monitoring of power distribution cabinets at data centers. It can monitor the electrical parameters and switch status of 2 inlet lines



Power Supply Cabinets

Power Supply Cabinets Power Supply Cabinets Raycap's cabinet solutions for LTE-/5G antenna locations offer the highest reliability to effectively support mobile

Contact Us

For datasheets, pricing, or custom optical networking solutions, please visit:
<https://www.entrenamientointeligente.es>