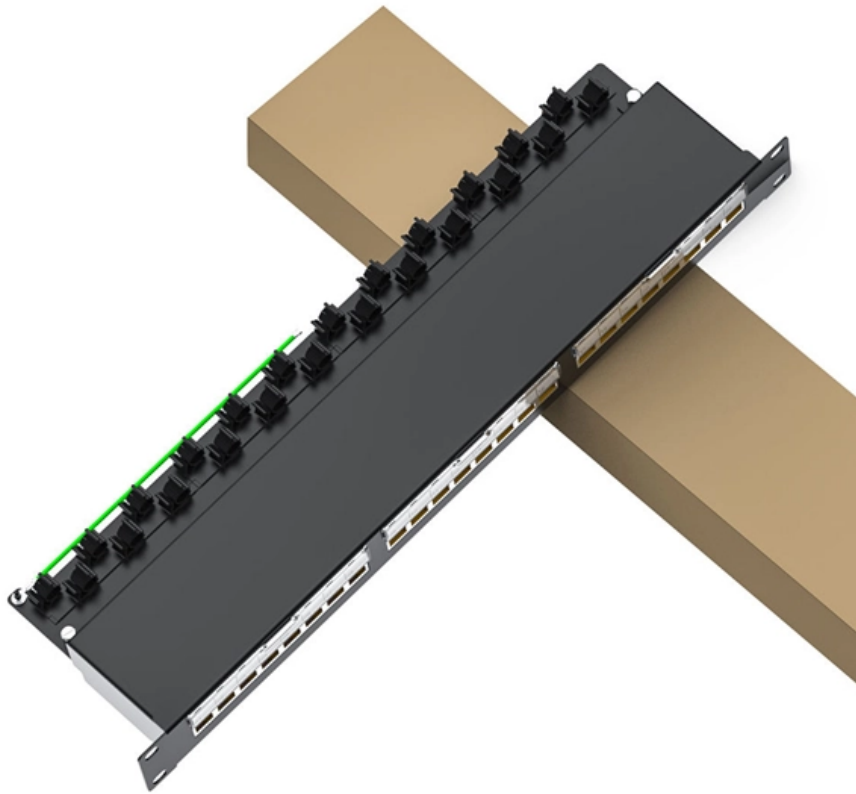


Do standard switches support optical modules





Do standard switches support optical modules

Common Optical Modules and Interfaces for Switches

Common optical module types such as SFP, GBIC, XFP, and XENPAK, along with optical interfaces like FC, SC, and LC, each have their unique characteristics that make them suitable for

What Is SFP Module in Network Switch?

With their diverse types and powerful functionality, switch SFP modules are essential components for enabling efficient and flexible communication through a switch's



The Most Comprehensive Guide Of Optical Modules

Explore the ultimate guide to optical modules. Learn types, functions, performance metrics & how to choose the right module for your fiber network.

OEM SFP Modules Explained: Compatibility, Cost and Use Cases

Do they perform better than compatible optics? Will third-party transceivers work reliably in enterprise switches without risking downtime or support issues? OEM SFP modules are typically

How to Match SFP Modules With Your Switch or Media Converter

Learn how to match SFP modules with your switch or media converter by checking compatibility, speed, fiber type, wavelength, and distance. A clear and practical guide.



Ultimate Guide to SFP+ Transceiver Modules Updated

SFP+ transceiver modules are an advanced iteration of the Small Form-factor Pluggable (SFP) interfaces designed to support faster data rates and

Unlocking the Power of Cisco's SFP-10G-LR: The

The Cisco SFP-10G-LR, compliant with the 10GBase-LR standard, provides Ethernet connectivity options for data centers and enterprise networks,

800G Client Optics in the Data Center



When hyperscale data center operators start deploying a new generation of client optics, they immediately require massive volumes of optical modules to build out switching fabric and router

Guidelines for Interoperability and Compatibility of

Due to the occasional incompatibility between certain brands of switches and optical modules from other suppliers, please ensure that your switch supports your

What is SFP Module? An Ultimate Guide (2024)

An SFP module is a small, pluggable optical transceiver that fits into the SFP port of a networking switch or other device. Sometimes, it is known as



Optical Transceiver Interoperability and Compatibility Guide

Will the optical transceivers I purchased work smoothly with my other modules? Will the modules be compatible and operate flawlessly on my

Comprehensive Guide to Optical Transceiver Interoperability and

Discover the essential guide to optical transceiver interoperability and compatibility. Learn how to ensure seamless network connectivity, avoid vendor lock-in, and optimize your fiber optic

Cisco SFP vs GBIC vs XFP vs SFP+: A Practical



Learn the differences between SFP, SFP+, GBIC, and XFP modules - speeds, distances, and compatibility, from Network-Switch experts.

The Ultimate Introduction to the PON Modules: Understanding the

Combo modules: integrate multiple optical signaling functions and typically support different standards, such as EPON and GPON. They simultaneously support multiple PON standards on a single

The Ultimate Guide to SFP Modules (2026): Types,

A: Generally, no. SFP+ modules typically cannot negotiate down to 1G speeds in a standard SFP port. However, the reverse is often true: you can usually plug a



Optical Modules for Huawei S Series Switches

A switch must use optical or copper modules that have been certified for use on Huawei switches. Non-certified optical or copper modules cannot ensure transmission reliability and may affect service

Fiber Optic Switches Information

Important switch performance parameters to consider when searching for fiber optic switches include: wavelength range number of input ports number of output ports

Demystifying Optical Transceivers: Your Top FAQs

FAQ Summary of optical modules: answers on types, compatibility, design, troubleshooting, and glossary for 2025 network upgrades and maintenance.



What Is an Optical Module and Its FAQs (V200)

What Is an Optical Module and Its FAQs (V200) Describes what an optical module is and FAQs, including the fundamentals, appearance and structure, key performance counters, common types,

SFP vs. SFP+ Modules: Key Differences and How to

SFP vs. SFP+ Modules: Data Rates and Distances SFP and SFP+ modules offer versatile connectivity for optical fiber networks. SFP+ supports

What is SFP Module and How to Choose it?



Ethernet SFP module, known for its compact, small form-factor pluggable design, also referred to as a mini-GBIC (gigabit interface converter), is

Optic Modules Datasheet

These platforms support multiple interface types and technologies such as Ethernet, ATM, and SONET. Depending on the deployment scenario, they support different pluggable optic modules that can be

Optical module

Optical modules can either plug into a front panel socket or an on-board socket. Sometimes the optical module is replaced by an electrical interface module that implements either an active or passive



What is an SFP Module? An Ultimate Guide , SFP

What is an SFP Module? Small Form-factor Pluggable (SFP) module is a compact, hot-swappable transceiver used for both telecommunication and

Ultimate Guide to SFP+ Transceiver Modules Updated

It supports both short-wavelength (850nm for MMF) and long-wavelength (1310nm for SMF) transmission. It forms the basis of the 10GBase

SFP vs SFP+: A Complete Guide to Compatibility and

In most scenarios, an SFP module can operate in an SFP+ port, but the link will downshift to 1Gbps. This is because SFP+ ports often offer backward



Contact Us

For datasheets, pricing, or custom optical networking solutions, please visit:
<https://www.entrenamientointeligente.es>