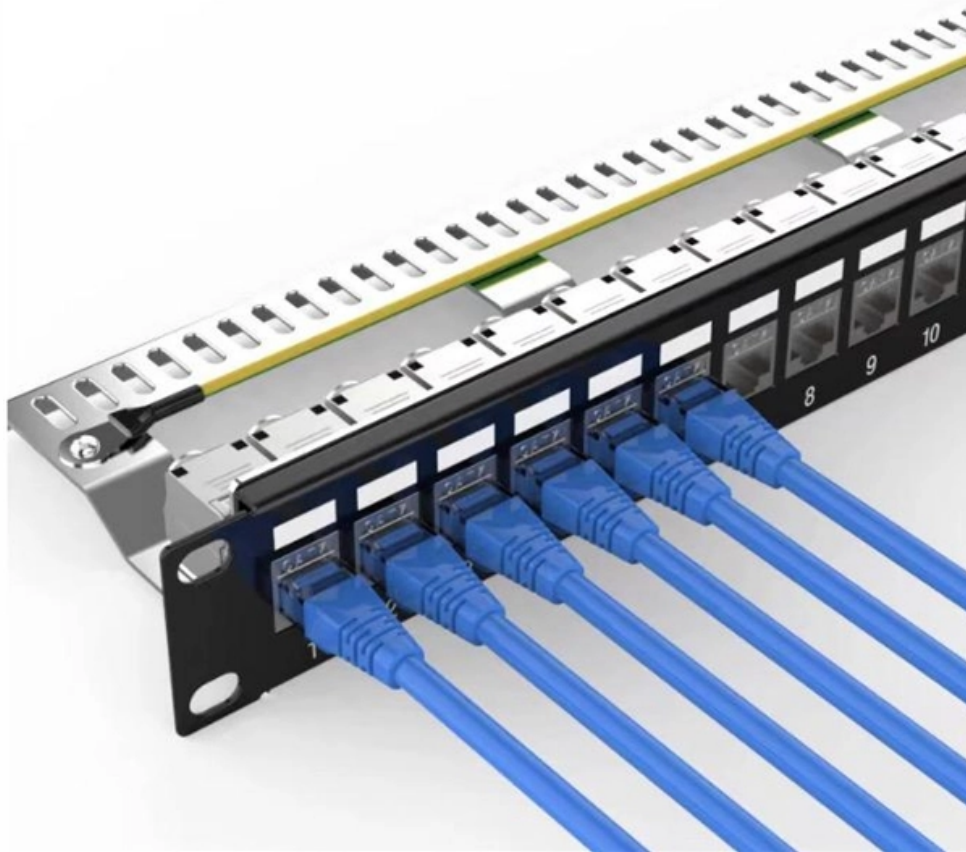


# **Does fiber optic splitter attenuation occur**





## Does fiber optic splitter attenuation occur

---

# The Ultimate Guide to Attenuation in Optical Fibers

---

Discover the intricacies of attenuation in optical fibers, its impact on signal quality, and effective strategies for minimizing signal loss to ensure reliable data transmission.

## What is a Fiber Optic Attenuator and How Does It Work?

---

As the light wave passes through the fiber optic cable, some of the light scatters due to microscopic irregularities in the cable. The scattered light waves are then absorbed by the cladding



## How to Calculate Splitter Loss in Optical Fiber

---

One of the most valuable uses of optical splitters is to determine splitter loss. This loss occurs because the signal level decreases as the signal is divided into two or more outputs.

## Optical Splitters: Split Ratios, Splitting Architectures & PON Network

---

Optical signals lose power (attenuation) as they travel through fiber--typically 0.2dB/km for single-mode fiber at 1550nm (the primary PON wavelength). A higher split ratio means each

## What are the causes for attenuation in optical fibers?

---

Discover the key causes of attenuation in optical fibers and learn how factors like



absorption, scattering, and bending distort signal quality. Explore

## **What is Attenuation in Optical Fiber and Its Causes**

---

What is Attenuation? Attenuation meaning is the reduction of signal strength and it can occur in any kind of signal like analog otherwise digital. In some cases, it can

## **Basic Principles of Fiber Optics Series: Attenuation**

---

Discover the causes and effects of attenuation in fiber optic cables. Learn about scattering, absorption, bending losses, and how to limit signal

## **Fiber adapter attenuation**

---



Signal attenuation, also known as signal loss, is a phenomenon that occurs when a signal transmitted through an optical fiber adapter experiences a reduction in power or amplitude.

## **Intrinsic and Extrinsic Attenuation in Fiber Optic Cables**

---

Attenuation limits the distance in which the signal can travel through optical fiber and is measured in decibels (dB). It can either be inherent within the

## **Understanding Attenuation in Optical Fibers: Causes and Implications**

---

This blog post explores the concept of attenuation in optical fibers, detailing the types of losses--absorptive and radiative--along with their causes, mechanisms, and implications for fiber



## **Fiber Loss Analysis Guide**

---

Fiber loss, also known as fiber optic attenuation or attenuation loss, is a critical parameter that quantifies the reduction in light intensity as it travels

## **Basic Knowledge about Split Ratio and Insertion Loss of**

---

In summary, understanding split ratio and insertion loss of optical splitter is vital for optimizing fiber optic networks. The split ratio dictates power

## **Optical Fiber Loss and Attenuation , MEETOPTICS**

---



Attenuation refers to the amount of signal loss as it travels down the fiber, typically expressed in dB/km. Losses can be caused by scattering, absorption, dispersion

## **The Ultimate Guide to Optical Signal Attenuation**

---

Absorption occurs when the optical signal is absorbed by the fiber material, converting the signal energy into heat. Scattering losses occur when the signal is scattered in different directions

## **Optical Fibers: Signal Attenuation and Dispersion**

---

Attenuation and dispersion are the two most important effects that play a major part in optical fiber transmission systems. The attenuation of optical signals would limit the



## Attenuation in Optical Fiber

---

Optical fibers are a key component in modern communication systems, carrying signals over long distances. However, even the most advanced optical fiber suffers from attenuation, which is the loss

## Beam Splitters - optical power splitter, beamsplitter, thin

---

Beam splitters are devices for splitting a laser beam into two or more beams. There are different types, including polarizing and non-polarizing versions.

## Fiber Attenuation

---

Optical attenuation in an optical fiber is one of the most important issues affecting all applications that use optical fibers. A number of factors may contribute to fiber attenuation, such as material



## Signal Attenuation in Optical Communications

---

Signal attenuation in optical communications occurs due to various factors that reduce the intensity of the light signal as it travels through the fiber optic cable. The main causes of signal

## Introduction to Passive Optical Network Splitter Architectures

---

Where splitters are placed in the network can make significant impacts on fiber counts, network cost and deployment time and operational steps, such as customer onboarding and maintenance.



## Understanding Optical Splitter Loss

---

Understanding splitter ratios and insertion loss is fundamental to building a reliable fibre optic network. The key takeaway is that every split reduces optical power, and this loss must be

## The Fiber Optic Association

---

Optical splitters introduce a large attenuation, a 1:2 splitter introduces as much attenuation as an optical fiber about 10 km long (>3dB). The existence of an optical splitter on the display of OTDR shows as a

**#fiberoptic #ftth #gpon #telecom #networking #olt  
#ont #onu**

---

Fiber Optic is one of the most advanced communication technologies used today to deliver ultra-fast and stable Internet connections. Unlike traditional copper cables that transmit electrical



## **Understanding Attenuation Loss in Optical Fiber and**

---

Attenuation loss in optical fiber refers to the reduction in optical signal power as it propagates through the fiber due to various factors. This loss directly

## **What Are the Causes and Solutions for Plc Splitter Loss in Optical**

---

These technological strides have substantially mitigated splitter loss issues in optical fiber networks. SDGI has been at the forefront of these advancements, offering cutting-edge solutions



## Passive Splitter Loss -- How Much dB Per Split , TTI Fiber

---

A 1×2 PLC splitter adds ~3.1 dB; a 1×32 adds ~16.25 dB. Learn how passive splitter insertion loss is calculated and how it affects your fiber link budget.

## PON crib: splitters, ratios, gains, losses

---

A very frequent question is how the splitter ratio in an optical splitter relates to the actual signal gain. In other words, how much attenuation a splitter

### Contact Us

---

For datasheets, pricing, or custom optical networking solutions, please visit:  
<https://www.entrenamientointeligente.es>