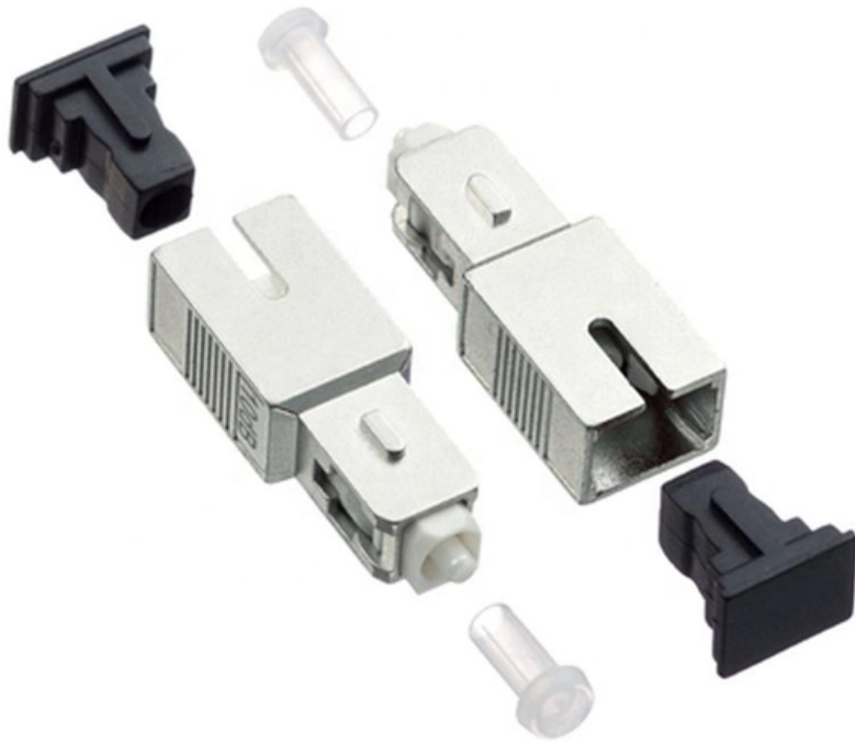


# **Enterprise Access Layer Switch Selection**





## Overview

---

If you are evaluating Cisco access switches for enterprise networks, start with five things: port density, PoE demand, uplink capacity, multigig requirements, growth planning, and fault isolation. This is the next generation of modular Gigabit and Multigigabit Ethernet switches. Prioritize raw processing and deep buffers at the core (Huawei/Ruijie), and maximize PoE density and cost-efficiency at the access layer (NSComm). Pick an access layer switch that (1) offers enough ports for every wired and PoE device you'll add over the next three years, (2) delivers the speed—1 Gbps for general traffic or 10 Gbps for heavy data—to keep users productive, and (3) includes security and management features that prevent downtime. As the bottom layer of the hierarchical internetworking model, the access layer is also known as the desktop layer.



## Enterprise Access Layer Switch Selection

---

### Access Layer Security Design

---

Access Layer Security Design One of the most vulnerable points of the network is the access edge. The access layer is where end users connect to the network. In the past, network administrators have

### Cisco Data Center Infrastructure 2.5 Design Guide

---

Access layer switches are primarily deployed in Layer 2 mode in the data center. A Layer 2 access topology provides the following unique capabilities



## Cisco Switch Selector

---

The series provides enterprise-class Layer 2 and 3 switching, is designed for Cisco DNA Center and SD-Access management and automation, and includes an Enhanced Limited Lifetime Warranty (E

## SBA for Enterprise Organizations -

---

To maintain maximum resiliency, select ports from different line cards of a chassis-based access layer switch or, if you are using a stacked access layer, from different physical stack members.

## Modular Access Layer Deployment Guide

---

Why an agency might wish to use a modular switch in the access layer Cisco Smart Business Architecture (SBA) for Government product recommendations and the rationale behind the



## **Choose access layer switch for the access layer network**

---

In each layer, the enterprise switches are categorized, among which the access switch is a key part in which local end-users are allowed into the

## **What is the Access Switch?**

---

What is the Access Switch? A typical enterprise hierarchical LAN campus network design includes an access layer, distribution layer, and the core layer. In each

## **What is an access switch and how to select access**



## switches?

---

What is an access switch? Learn the features and applications, and know how to select the right access switch for your network needs. Ruijie Networks' access switches here for you.

## What Defines Optimal Access Switching? Can Your Enterprise

---

Selecting the right access layer switches represents one of the most critical decisions network administrators face when building or refreshing enterprise infrastructure.

## How to Choose the Right Access Layer Switch?

---

By understanding your needs and comparing options, you can choose a switch that keeps your network running smoothly for years. Ready to find the



## **Enterprise Switches: Types & Their Selection Guide**

---

Learn about different types of enterprise switches and discover how to select the ideal one for your specific application needs.

### **Cisco Switch Selector**

---

Cisco Meraki MS120 switches provide Layer 2 access switching ideal for branch and campus deployments. The MS120 series features a variety of power options

### **Access vs. Distribution vs. Core Switch Comparison Guide**

---



Compare Access, Distribution, and Core switches: understand their roles, features, and differences in enterprise network hierarchy. Make informed network design decisions.

## **Choose access layer switch for the access layer network**

---

In each layer, the enterprise switches are categorized, among which the access switch is a key part in which local end-users are allowed into the network. This article will introduce what the

## **Choose the Right Enterprise Switch in 2026: A Technical Buyer's Guide**

---

Choosing the "right" switch isn't about finding the most expensive or the cheapest-it's about selecting the optimal hardware for its specific role. This guide, crafted by the certified



## **FS Access Switches Selection Guide for Your Networks**

---

In today's interconnected world, choosing the right access switch is crucial for ensuring efficient network performance. This guide will help you

### **How to Choose the Right Access Layer Switch?**

---

Let's explore the key factors to consider when selecting an access layer switch. Whether setting up a small office or managing a large enterprise

### **3-Layer Enterprise Switching Architecture: Core vs Access**

---



Explore enterprise switching architecture and see how core, aggregation, and access layers integrate with PoE, oversubscription, and design

## **How to Select Access Layer Switches for Industrial Network?**

---

To ensure network performance, access layer switches implement security measures such as port security, VLANs (Virtual Local Area Networks), and ACLs (Access Control Lists),

## **What Kind of Access Layer Switch Should You Get?**

---

What Kind of Access Layer Switch should Enterprise Get? Many factors must be considered when selecting access layer switches, including port



## Cisco Switch Selection Guide for Enterprise Campus

---

Learn how to choose Cisco campus switches by layer, site size, PoE, uplinks, redundancy, and lifecycle risk. A practical enterprise campus switch

## L2 vs L3 Switch: How to Choose for Your Access Layer

---

Learn how to choose between L2 and L3 switches and build an access network that's reliable, scalable, and easy to manage.

## Enterprise Switches: Everything You Should Know

---

Distribution switches act as intermediaries between core and access layer switches and are often called aggregation switches. They ensure packets



## **High Availability Campus Network Design--Routed**

---

For campus designs requiring simplified configuration, common end-to-end troubleshooting tools and the fastest convergence, a distribution block

## **What Is an Access Layer Switch? Guide complet**

---

Learn what an access layer switch is, how it works in enterprise networks, and how to choose the right Cisco access switch for your SMB.

## **Access Layer Compact Switch Deployment Guide**

---



though the switch itself is still powered. To maintain maximum resiliency, select ports from different linecards of a chassis-based access layer switch or, if using a stacked access

## Contact Us

---

For datasheets, pricing, or custom optical networking solutions, please visit:  
<https://www.entrenamientointeligente.es>