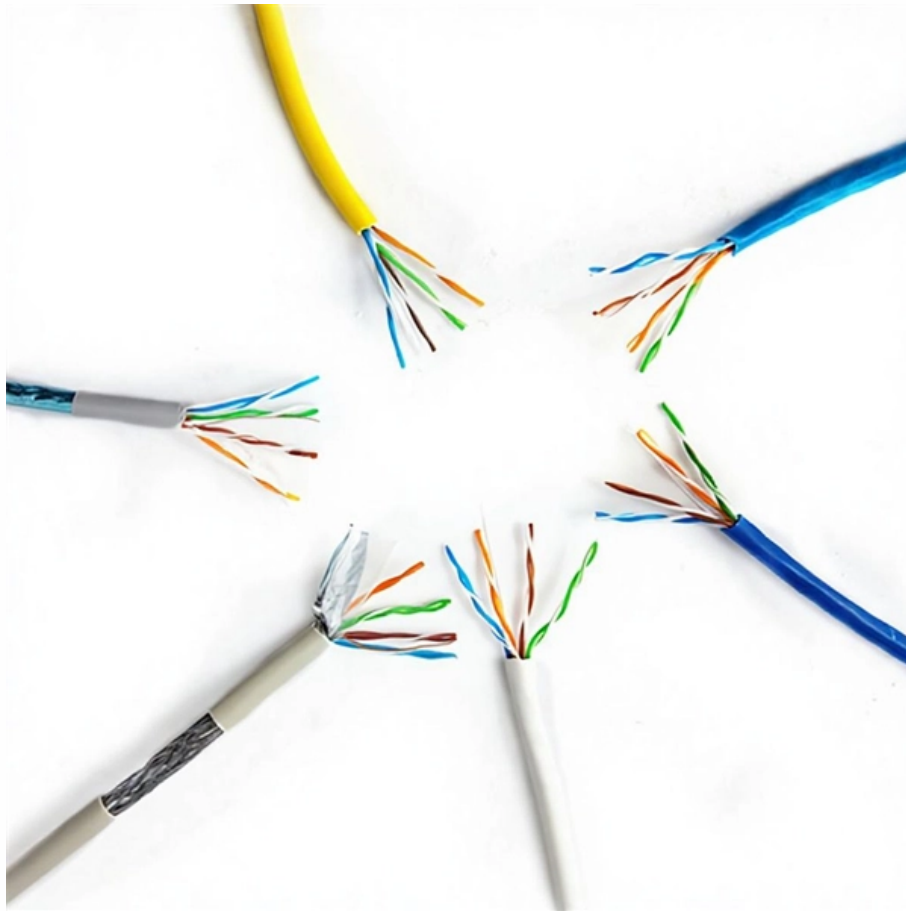


Fiber optic repeater segments





Fiber optic repeater segments

Repeaters in Computer Network

Optical Repeater: Optical repeaters are defined as a type of repeaters that are used for the communication of fibre optic communication systems. Optical repeaters can amplify and reshape

ethermanage

When a transmission path consists of four repeaters and five segments, up to three of the segments may be mixing and the remainder must be link segments. When



MS/TP Network Accessories

You use the bLINK Series MS/TP repeaters (the bLINK-AC-S, the bLINK-DC-S, the bLINK-F-AC-S, and the bLINK-F-DC-S models) to provide an RS-485 repeating function between multiple BACnet

S+ I/O: SD Series fiber optic repeater RFO810

Symphony Plus S+ I/O: SD Series fiber optic repeater RFO810 Introduction The RFO810 is the redundant optical communication repeater that allows S+ Control's SD Series controllers (HPC800

Microsoft Word

FIBER OPTIC REPEATER SELECTION GUIDE Fiber optic cables are ideally suited for long distance communications. However, there are situations where link loss (attenuation) is too high due to splice,



Four-Channel 25GBase-SR or Single 100GBase-SR4

Built for modern data center and enterprise environments, this repeater regenerates and amplifies 25GBase-SR or single 100GBase-SR4 optical signals across up to

Analysis of Repeaters in Fiber Optic Communication

Repeaters are used to boost incoming signals in the fiber. Optical Spectrum at different links in a fiber optic link is being observed.

CAN Repeaters



Introduction Repeaters are used to establish a physical coupling of two or more segments of a CAN bus system. They can be used to implement tree or star

Modicon Fiber Optic Repeaters User's Guide

The maximum length of any optical path between two fiber optic repeaters must be calculated separately, and depends on the total loss in all components used in the path, including fiber optic

Optical communications repeater

An optical communications repeater is used in a fiber-optic communications system to regenerate an optical signal. Such repeaters are used to extend the reach of optical communications links by



repeater in The Network Encyclopedia

Extending backbone fiber-optic cable runs in campuswide LANs or metropolitan area networks (MANs) Repeaters are also used in fiber-optic networks to amplify and regenerate light signals for long

Communication Components Inc.

CCI's Fiber Distribution Unit provides the means to convert RF input signal from the SXM Dual Band Exciter (DBE) into optical outputs that are used to distribute the SXM transmission to multiplier

Modicon Fiber Optic Repeaters User's Guide: Gm-Fibr

It describes the different repeater models, typical cable configurations, how to select



cables and calculate optical paths, installation and mounting instructions, and

chapter 17 -

A bridge is a device used to connect two LAN segments. Two LAN segments, of length X and Y , joined by a bridge, will work in a situation where one segment of

Analysis of Repeaters in Fiber Optic Communication

DM spectrum with uniform gain for all wavelengths. The main objective is to increase the spacing between the repeaters and hence reduce the number of repeaters and find the optimum



AS-i bus system overview

AS-i topologies could not be more flexible Below are examples of different AS-i cable topologies that are used for wiring systems and applications. These different

Understanding Repeaters In Computer Networks

A Repeater is an indispensable device in computer networks, ensuring data integrity and connectivity across large distances. Its ability to amplify and regenerate

ProfiHub B5 + RD

ProfiHub B4FO2+ - Fiber Optic to Multi Segment Coupler The ProfiHub B4FO2 is a cost-effective solution to link PROFIBUS fiber optic to multiple RS 485 segments and vice versa. It enables reliable



S+ I/O: SD Series fiber optic repeater RFO810

The RFO810 is the redundant optical communication repeater that allows S+ Control's SD Series controllers (HPC800 and SPC700) and HR Series controllers (BRC300/400/410) to transparently

Microsoft Word

Fiber optic cables are ideally suited for long distance communications. However, there are situations where link loss (attenuation) is too high due to splice, patch panels, number of connectors, or

ProfiHub



The ProfiHub B4FO2+ is a cost-effective solution to link PROFIBUS fiber optic to multiple RS 485 segments and vice versa. It enables reliable applications where

FIBER OPTIC COUPLER AND REPEATER

The PROFIBUS Fiber Optic Coupler and Repeater FOL 7250 converts PROFIBUS into fiber optic signals. Thus, great distances can be bridged at high transmission rates (1,000 m at 1.5 Mbit/s)

What are the Essential Components and Applications of a Fiber Optic

Fiber optic repeaters, while seemingly simple components in the vast tapestry of modern telecommunications, represent a sophisticated interplay of optical and electronic engineering.



Ethernet Segment

An Ethernet segment refers to a length of coaxial cable, twisted copper pairs, or optical fibers used to connect hosts in a network. It allows hosts to transmit and receive signals, and multiple segments

Contact Us

For datasheets, pricing, or custom optical networking solutions, please visit:
<https://www.entrenamientointeligente.es>