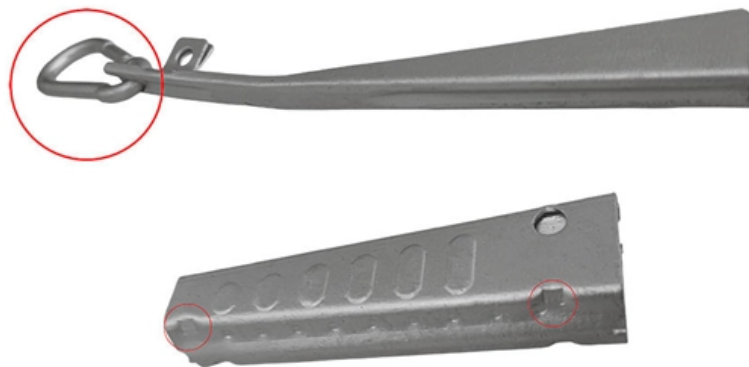


Flame-retardant 4-core optical cable





Flame-retardant 4-core optical cable

Draka FT Fire Resistant Fibre Optic Armoured

FireTuf fibre optic cables are manufactured by Prysmian Draka. Offered in OM1, OM3 and OM4 multimode and OS2 singlemode, in 4, 8, 12 or 24 core fibre

Opti-Core Fibre Optic Indoor-Outdoor 4 Fibre Cable

This cable has flame retardant and LSZH properties and is ideal for indoor installations. The cable is water-blocked and well suited for installation in ducts and on trays indoors and limited outdoor use in



Draka FireTuf Fire Resistant Fibre Optic Cable

8, 12 & 24 Core Fibre Optic Cable OM1, OM3, OM4 multimode and OS2 singlemode, Loose Tube, Internal/External LSZH. Manufactured by Draka Using BendBright.

4 Core Optical Fiber Cable

Secure your communication networks with Hua Qi 4 core optical fiber cable, designed for underground coal mines with PVC insulation and flame retardant properties.

FO Cable Patchcord 12C OS2 Type-B LSZH 20m Corning

Fiber Optic Patch Cable, Fiber Optic Patchcord US Conec MTP-MTP F to F 12 Cores Type B Single Mode OS2 Corning G657A1 Elite Low Loss 0.35dB Max 3.0mm Flame Retardant LSZH 20m (66ft)



Flame Retardant Multi Loose Tube Fiber Optic cables

The multi loose tube non metallic cables are designed for outside plant, which is prone to electrical interference. They are mainly installed inside buildings, tunnels,subways or closed areas in general,

What is Ribbon Fiber Optic Cable? A Guide to Its Benefits

Explore what ribbon fiber optic cable is. Our guide covers its flat structure, types, and key benefits like mass fusion splicing and space-saving

Haile Armoured 4-core Single-mode Outdoor Flame



Retardant Fiber

This 4-core single-mode fiber optic cable ensures high bandwidth and low signal loss over extended distances. Its robust armoured construction guards against physical damage, while the flame

12 Core 50/125um OM2 Indoor Fiber Cable LSZH GJFJV

12 Core GJFJV Indoor optical fiber cable 50/125um OM2 Multimode Multi-Core Tight Buffered LSZH Distribution Indoor optical Fiber Cable is made of multi-strand aramid yarn, this yarn is reinforced

FO Cable Patchcord 10G 12C OM3 Type-B LSZH 20m Corning

Fiber Optic Patch Cable, Fiber Optic Patchcord US Conec MTP-MTP F to F 12 Cores Type B



Multimode 10G OM3 Corning Elite Low Loss 0.35dB Max 3.0mm Flame Retardant LSZH
20m (66ft)

Kaitron GYFTZY-4B1 Non-metallic Flame Retardant 4-Core Fiber

Designed with a non-metallic reinforcing core and non-armored flame-retardant construction, this cable is optimized for environments with high electromagnetic interference (EMI) and strict fire safety

Fiber Optic Cables

Indoor and outdoor, flame retardant, LSZH or PVC, loose tube, Armored SWA (Steel wires Armor), SWB (Steel wires Braid) or CST (Coarrugated Steel Tape).



Flame-retardant Indoor/outdoor Lose Tube Fiber optic Cable 4 cores

Indoor/outdoor fiber optical cables are made of low-smoke, halogen-free, flame-retardant materials. It can not only meet the flame-retardant requirements of indoor use, but also adapt to the needs of

Flame-retardant optical cable

These composite cables are specifically designed for radiation sensors and to withstand harsh environments encountered in nuclear power plants. These

LSZH Outdoor Armored Optical Fiber Cable,LC,SC,FC,Single-Mode,2-core 4

About this item Cables LSZH Outdoor Armored Optical Fiber Cable,LC,SC,FC,Single-



mode,2-core 4-core,6-core,8-core,Patch Cord,Flame Retardant,250m,300m See more product

Product Spec Sheet 002K8P-31130-A3

002K8P-31130-A3 Corning FREEDM® One interlocking armored cables are flame-retardant, indoor/outdoor cables designed for interbuilding and intrabuilding backbone installations

FO Cable Patchcord 12C OS2 Type-B LSZH 20m Corning

Fiber Optic Patch Cable,Fiber Optic Patchcord US Conec MTP-MTP M to M 12 Cores Type B Single Mode OS2 Corning G657A1 Elite Low Loss 0.35dB Max 3.0mm Flame Retardant LSZH 20m (66ft)



Development of flame retardant and fire-resistant optical cable based

Abstract In this paper, a kind of flame retardant and fire-resistant optical cable is prepared with ceramic sheathing materials. Its structure is mainly composed of cable core, longitudinal covering a layer of

GYTZA Water Blocking Material LSZH 4 Core Flame Retardant Fiber

The interstices within the cable core are filled with water-blocking gel, providing a reliable barrier against moisture ingress. A flame-retardant outer sheath, extruded over longitudinally wrapped coated

DS-QFV-CKS4L 4-Core Single Mode Flame Retardant Optical Fiber



Core Single Mode Flame Retardant Optical Fiber HIKVISION® ® " Loose tube construction, tubes jelly filled, elements (tubes and filler rods) and water blocking yarns laid up

FO Cable Patchcord 12C OS2 Type-B LSZH 15m Corning

Fiber Optic Patch Cable, Fiber Optic Patchcord MPO-MPO F to F 12 Cores Type B Single Mode OS2 Corning G657A1 Low Loss 0.35dB Max 3.0mm Flame Retardant LSZH 15m (50ft)

Contact Us

For datasheets, pricing, or custom optical networking solutions, please visit:
<https://www.entrenamientointeligente.es>