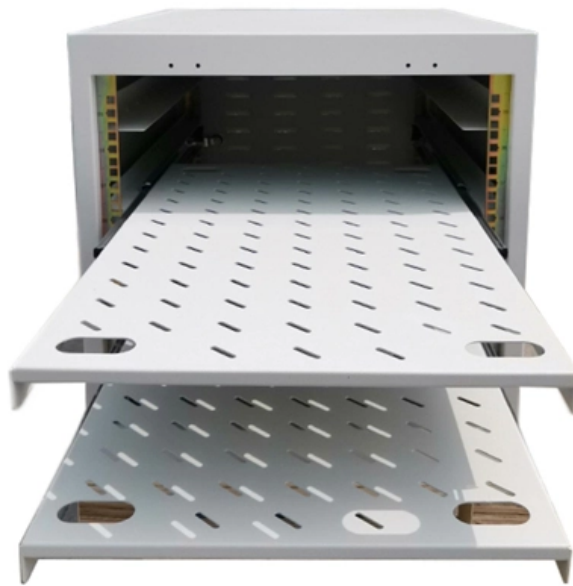


GPON home gateway device registered





GPON home gateway device registered

ASCENT AP214H GPON HGU ONT USER MANUAL Pdf Download

It is based on mature and stable, cost-effective XPON technology. XPON can switch automatically with EPON and GPON mode when it accesses to the EPON OLT or GPON OLT.

ISKRATEL ISKTG84 GPON Home Gateway User Guide

Connect the GPON optical connector to the GPON port on the device. 3. Plug the DC jack of the power-supply adapter to the POWER port on the device, and the other end to your electrical power outlet. 4.



Cannot connect through seperate GPON

If I plug a computer directly to the ONT device, there is no internet connection. I presume the ONT device is checking that it is the router on the other end before allowing the connection?

INNBOX GPON/EPON Home Gateway : Users Manual

?? . Inbox G?? Quick Start Guide Bottom View The bottom of the Inbox G?? home gateway is equipped with an optical GPON connector that allows you to connect your device.

7109505778_XZ000-G7(UN)_1.0_QIG_V1

B Go to Basic > Internet or Advanced > Network > GPON setting. Enter the GPON



Password and/or GPON SN provided by your ISP (Internet Service Provider) to register the Terminal and click Save.

Radisys PM4264S GPON GPON Home Gateway User

This equipment has been tested and found to comply with the limits for a Class B digital device, pursuant to Part 15 of the FCC Rules. These limits are designed to

Iskratel GPON Home Gateway : Quick Start Guide

PAGE 9 Inbox G84 Quick Start Guide 4 9/16 Connecting Your Devices 4.1 Connecting a Computer What you need: ? The Inbox G84 home gateway (included in the package); ? An Ethernet RJ-45



6 GPON ONU Abnormal State

6.1.1.1 Fault Identification and Demarcation A failure to go online is also called a registration failure. An ONU connected to a GPON port of an OLT fails to go online normally, but the queried Run state of

Nokia 7368 Intelligent Services Access Manager ONT

7.13 Viewing voice information Viewing device information Click Status Device Information from the left pane in the GPON Home Gateway page. The Device

How to Configure Gpon/Xpon router , onu router configuration , Gpon

This video tutorial provides a comprehensive guide on how to configure an Xpon router, also known as an ONU router or GPON router. After watching this video you can easily

Radisys PM4264S GPON GPON Home Gateway User Guide

The GPON Home Gateway Unit (HGU) is an ITU-T G.984 ONT designed for delivery of telephone services, IP-base data services, and IPTV video services to single-family homes and small

ISKRATEL ISKTG84 GPON Home Gateway User Guide

The top of the Innbox G84 home gateway is equipped with several light indicators that provide you with the status of the device. On - The device is powered on and operational. Off - The device is



Support

GPON overview As the information society continues to develop, people increasingly demand higher network speed and quality. Fiber to the home (FTTH) technology, an important means of meeting

957DNS00W1-PM4264S QIG 20221206B

The GPON Home Gateway Unit (HGU) is an ITU-T G.984 ONT designed for delivery of telephone services, IP-base data services, and IPTV video services to single-family homes and small

User Guide

TP-Link's GPON router is a combined wired/wireless network connection device with integrated high speed GPON ONT, NAT router, 4-port switch, and wireless access point,



reducing hassle of

How to check how many devices connected to our fiber on GPON Home Gateway

Hello? friends welcome back to my channel I hope aapko meri video pasand aayi hogi agar ha toh jaldi se like ?share and subscribe kar dijiye aur bell ?ico

Iskratel GPON Home Gateway : Quick Start Guide

When you switch the home gateway on, pay attention to the light indicators. It takes about 30 seconds for the Innbox G84 home gateway to boot up; the POWER light indicators should be on uninterruptedly.



GPON FTTH Home Gateways

Innbox G-series of GPON home gateways delivers an unrivalled subscriber experience. The family spans from first-class G9x, G8x and G7x models to cost-sensitive G2x models, ideal for dual-box

How to configure the internet access service on GPON

Note: This Article Applies to TP-Link GPON OLT P1201 Ver.1; All the service is based on the Data Plan, so before we start the configuration, we need

TA1910-4GVC-W ONU Quick Start Guide , FS

Thank you for choosing TA1910-4GVC-W integrated broadband access device. This guide is designed to familiarize you with the layout of the device and describes how to deploy the device in your network.



ICT3310D-8G2NAC XPON MDU 8GE Enterprise Gateway Router

GPON XPON MDU 4GE 4POTS ICT3310D-4G4S With Realtek Chipset ICT3310D-4G4S XPON MDU GPON + 4GE + 4POTS With Realtek Chipset Product Description ICT3310D series product is a

7109505778_XZ000-G7(UN)_1.0_QIG_V1.0.1

B Go to Basic > Internet or Advanced > Network > GPON setting. Enter the GPON Password and/or GPON SN provided by your ISP (Internet Service Provider) to register the Terminal



7109505620_XGZ030(EUSP)_1.0_QIG_V1.0.0

Go to Network > GPON Settings > GPON Registration. Enter the GPON Password and/or GPON SN provided by your ISP (Internet Service Provider) to register the Terminal and click

Contact Us

For datasheets, pricing, or custom optical networking solutions, please visit:
<https://www.entrenamientointeligente.es>