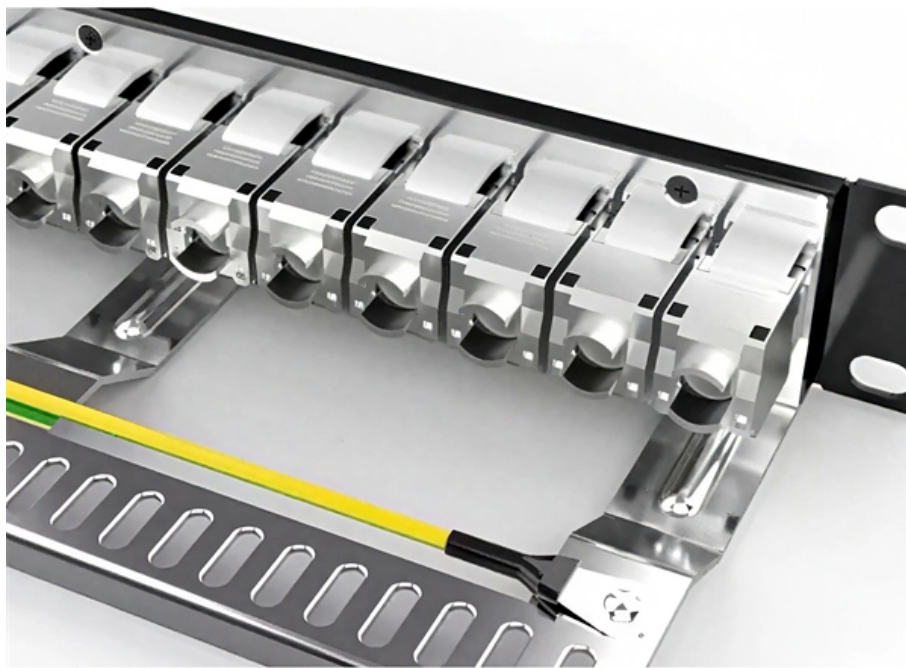


# **How long can the electrical distribution box on the construction site be used**





## How long can the electrical distribution box on the construction site

---

## Temporary electrical wiring for construction sites

---

work requires electrical power for many purposes. However, exposure to weather, frequent relocation, rough use and other conditions not normally encountered with conventional wiring systems

## How to Get Temporary Power for Your Construction Site

---

It's a safe and reliable electricity supply for tools, lights and facilities for the duration of a construction project. The temporary electrical infrastructure is removed when



# Everything You Need to Know About Temporary Power

---

Last Updated on April 12, 2023 Electricity powers countless business operations. From construction projects to emergency services, you rely on

## Temporary electrical installations on construction and

---

Electrical site distribution equipment All units for the distribution of electricity are to comply with BS 4363 Specification for distribution assemblies for

## How To Maximize Worksite Safety When Using Power Distribution Boxes

---

Temporary power distribution is an essential but potentially dangerous aspect of most jobs. Temporary electrical power is utilized in many places like construction sites, plants,



and

## **Construction Site Temporary Supply , 110V Guide UK , Elec-Mate**

---

Construction Site Temporary Supply: The Complete 110V Guide for UK Sites Construction site temporary installations must use 110V CTE for portable tools, IP-rated distribution

## **Electrical Installations On Construction Sites**

---

Practical guidance Electrical hazards are a major cause of death and serious injury on construction sites. This industry standard provides practical



## Electrical

---

Electrical hazards are addressed in specific standards for the construction industry. For additional information on general industry regulations, see the general industry regulations section. Visit the

## Electrical practices -- construction and demolition sites

---

All construction wiring (both on construction and demolition sites), switchboards and transportable structures must be inspected and tested in accordance with

## The installation requirements for the distribution box

---

A distribution box is the heart of any electrical system. It takes the incoming power and safely distributes it to different circuits throughout your



## **Power supply on the construction site**

---

One of the most important factors is the length of the cable, which varies depending on the distance between the power source and the equipment to be powered. In addition, it is important to consider

## **Electrical Installations at Construction Sites**

---

This includes ensuring all the vital spots of a construction site have electrical power to use the heavy-duty equipment. This means installing power cables, sockets,

## **ENERGYBOX Assemblies for Construction Sites (ACS)**

---



ENERGYBOX is a complete range of Assemblies for Construction Sites (ACS) pre-wired boards that can be wall-mounted or installed on a support. The panels are

## **Electrical safety on construction sites**

---

It includes advice on safe working practices for everyone who controls or influences the design, specification, selection, installation, commissioning, maintenance or operation of electrical

## **Essential Guidelines for Safe Temporary Electrical**

---

This article aims to provide a comprehensive overview of the essential guidelines for safe temporary electrical installations on construction sites, focusing on Best



## Essential Guidelines for Safe Temporary Electrical

---

Temporary electrical installations for construction sites are crucial for powering tools and equipment, but they also pose significant risks if not managed properly. With

### Key Points Of Installation And Collocation Of Distribution Box In

---

1. The power distribution system at the construction site shall be distributed in different levels. The main distribution box (or distribution room) shall be set up. The distribution box shall be set

### Temporary electrical installations on construction and

---



Every year, the use of electricity on construction sites results in accidents from electric shock and burns which can be serious or even fatal. This

## **Temporary Construction Power Box Guide: Portable Distribution**

---

This article explains how temporary construction power boxes work, the key components involved, and how E-abel portable electrical enclosures combined with industrial connector systems

## **Everything You Need to Know About Temporary Power**

---

Our portable construction boxes have served countless construction sites, hospitals, venues and more. Lightweight, sturdy and OSHA-approved,



## **LinkedIn Learning: Online Training Courses & Skill Building**

---

Accelerate skills & career development for yourself or your team , Business, AI, tech, & creative skills , Find your LinkedIn Learning plan today.

## **Power supply on the construction site**

---

A site power distribution board is usually an electrical distribution box equipped with various sockets to provide power for different equipment and machinery. A construction power distribution box may also

## **How To Get Temporary Power for Your Construction**

---



Working on a project in a remote location with no access to electricity? Here are 7 steps you can take to get temporary power for a construction site.

## **How to Make Temporary Power Safer on Construction**

---

Through a real-world project scenario, we explore how structured connectors, IP67 plug systems, and modular distribution cabinets create safer,

## **Safety requirements of distribution box**

---

The distribution box has the characteristics of small size, simple installation, special technical performance, fixed location, unique configuration function, not limited by



## Requirements for distribution box at construction site

---

3? The electrical components and leakage protectors used in the distribution box shall meet the quality requirements of the national standard. 4? The leakage protector shall be used in strict accordance

### Contact Us

---

For datasheets, pricing, or custom optical networking solutions, please visit:  
<https://www.entrenamientointeligente.es>