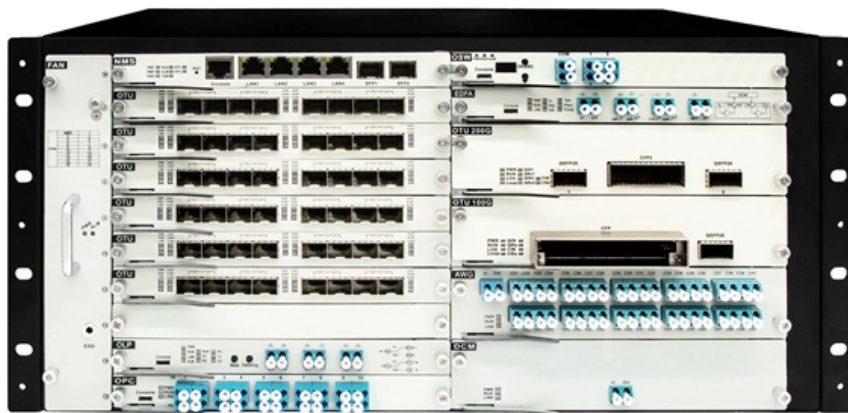


How to configure a management VLAN on an access switch





How to configure a management VLAN on an access switch

Technical Tip: How to configure a Bridge mode SSID on the FortiAP WiFi

Description This article describes step-by-step instructions on how to configure a Bridge mode SSID on the FortiAP WiFi. Scope FortiAP 7.4, FortiSwitch 7.2, and FortiGate 7.4.

Access port config (Huawei)

Design & Configure Access port config (Huawei) Technology: Switching Area: Neighbor Discovery Vendor: Huawei Software: eNSP Platform: Quidway switches An access port belongs to and carries



Cisco Meraki MS Switch: Monitor and Configuration

Security: Implement strong security policies, including access controls and regular firmware updates. QoS: Configure QoS to ensure critical applications

Solved: VLAN Trunking with Ubiquiti APs?

Hello, I'm having an issue where wireless clients can't access the wireless guest VLAN (25), SSID "Olivine". Clients are able to connect to the

VLAN Tagging on MR Access Points

VLAN Tagging on MR Access Points Last updated Dec 19, 2024 Save as PDF Table of contents Management Interface of Meraki APs Per-SSID VLAN tagging in



How To Configure A Default Gateway On A Cisco Switch?

How To Configure A Default Gateway On A Cisco Switch? Configuring a default gateway on a Cisco switch is essential for enabling inter-VLAN routing

EAP-TTLS/PAP Username+Password Authentication with Entra ID

Configure endpoints for username and password authentication
Configure Entra ID integration to synchronize users, user groups and user attributes
Configure SSIDs and Switches to use Access

Configuration guide of DHCP Options on Omada

Configuration Step 1. Create new VLAN on the Controller. Go to Network Config > Network Settings > LAN and click Add under the column VLAN. Select the Omada Switch where you wish to

How to Create and Configure VLANs on a Cisco Switch

This post will deal with creating Layer 2 VLANs on Cisco switches and performing all relevant configurations. Up to 4094 VLANs can be configured on Cisco catalyst

VLAN Configuration Commands Step by Step Explained

This tutorial explains VLAN configuration commands. Learn how to configure, test, and verify VLANs on Cisco switches.



The differences between managed and unmanaged

Unmanaged switches do not require IP addresses, as they focus solely on forwarding Ethernet frames and use the MAC address to determine how

Configuring an existing VLAN as the Management VLAN

The management station includes a network interface card with 802.1Q tagged VLAN Virtual Local Area Network. Separate logical broadcast domain created within a physical network.

What is a VLAN (Virtual LAN)?



Switches forward tagged frames toward their destination media access control address, forwarding only to ports with which the VLAN is associated.

Implementing Network and Client Isolation in UniFi

Implementing Network and Client Isolation in UniFi Once devices are assigned to VLANs, UniFi provides multiple tools to control and enforce separation across

Configuring VLANs on Aruba Switches

The Aruba Mobility Access Switch also supports the following types of VLANs: Voice VLANs--You can use voice VLANs to separate voice traffic from data traffic when the voice and data



Questions about Implementing Management VLAN on Cisco Switch

Access points usually require you to supply what vlan is used for management in their config, or supply a native vlan config on the switch port they're connecting to.

EAP-TLS Certificate-Based Authentication with Entra ID

Configure Entra ID integration to synchronize users, user-groups, and user-attributes. Configure SSIDs and Switches to use Access Manager. Configure the

How to Configure VLAN on a Cisco Switch: Step-by

Learn how to configure VLAN on a Cisco switch with step-by-step instructions for



creating VLANs, assigning access ports, configuring trunk ports,

How to Configure VLAN on Cisco Switch: Step-by-Step

Learn how to configure VLAN on Cisco switch step-by-step. Covers VLAN creation, port assignment, trunk configuration, best practices, and troubleshooting tips for IT professionals, SMBs, and enterprises.

What is a Management VLAN? How to configure VLAN management?

Management VLAN is a VLAN that is used for Managing and monitoring network devices like routers, switches, and other devices from a remote location by using protocols such as telnet,



Understanding the LED Indicators on Zyxel Access Points: A Guide for

The LED indicators on Zyxel Access Points provide users and administrators with a quick and reliable way to understand device status, network connectivity, and activity. Zyxel applies a

Cisco Meraki Local Status Page: Overview

Accessing the Local Status Page Most Cisco Meraki devices have a local status page that can be accessed to make local configuration changes, monitor device status and channel utilization,

What is a 10G SFP+ Switch and How to Use It?



This 10G SFP+ managed switch operates at Layer 3, providing advanced network management features such as port mirroring, VLAN, static

UniFi

UniFi - Device Adoption A doption is the process of connecting a UniFi device--such as an Access Point (AP), camera, switch, or sensor--to the UniFi Gateway and

Contact Us

For datasheets, pricing, or custom optical networking solutions, please visit:
<https://www.entrenamientointeligente.es>