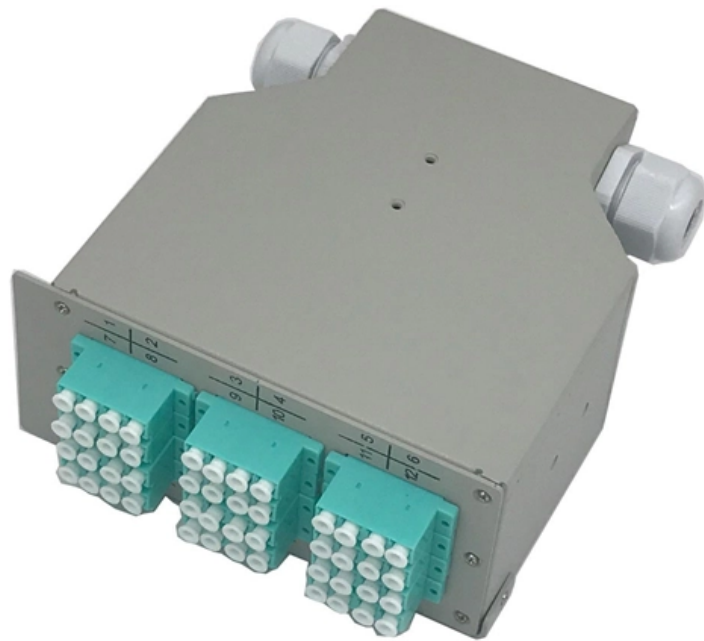


How to install the temperature measuring optical cable fixing clamp





How to install the temperature measuring optical cable fixing clamp

INSTRUCTION MANUAL FOTEMP T20 Fiber optic temperature

In this model, the temperature must exceed the high temperature to switch the relay and only when the temperature falls below the low temperature, the relay switches again.

Thermocouples Installation and maintenance Resistance

For all connecting wires it is important to ensure that proper contact has been established and that corrosion, humidity, pollution, electrical parasitic interferences of power cables etc. are avoided.



OPTOCON FOTEMP1 USER MANUAL Pdf Download , ManualsLib

If you need to extend the fiber optic temperature sensor please use the extension cables also available from Optocon AG. For thermometers that have only 1 or two channel (s), only 1 or t2 sensor

How To Install Thermocouple

Here is a new vlog entitled: How to install thermocouple - temperature monitoring for Raft Concrete. It is important to monitor the temperature of concrete.

MAN-00098 Hot Spot Temperature Sensor Installation Guide



The FISO Fiber Optic monitors are designed to monitor fiber optic Hot Spot temperature sensors installed inside high voltage power transformers. Immunity to electrical interference and the high

Amazon : Electronics

Explore a wide range of electronics including streaming devices, headphones, chargers, and smart home gadgets. Find quality products for every need.

How to Properly Install a Temperature Sensor

Conclusion Correct installation of temperature sensors not only improves measurement accuracy but also extends device lifespan and ensures operational



How to Install Thermocouples for Accurate Temperature

Because of this principle, a thermocouple always measures its own temperature, not the surrounding air or process by default. Proper installation

How to Install Thermocouples for Accurate Temperature

Thermocouples are widely used temperature sensors across industrial, laboratory, and commercial applications due to their durability, wide

Comprehensive Guide to Fiber Optic Cable Clamps

Fiber optic cable clamps are devices used to secure and stabilize fiber optic cables in telecommunications, data centers & network systems.



How to install fiber optic drop cable by S-type drop clamp, made by

Key Features of S-type drop clamp: Application FTTH cable messenger diameter (over the insulation): 1-2.5 mm Hand installation Durable UV resistant, and weather resistant thermoplastic Easy to

Power and optical cable clamp for Optical

Cable Fixing Clip, 6 runs (2x3 stacks), C type Bracket, for Optical cable+3.3/4/6/8.3mm² RRU Power cable. Fiber optic cable clamp is to install

Temperature Measurement Installation Best Practices



As a project engineer, it's important to understand the design decisions made in the selection and procurement of the temperature measurement devices.

Fiber Optic Cable Installation and Handling Instructions

Fiber optic cables can be easily damaged if they are improperly handled or installed. It is imperative that certain procedures be followed in the handling of these cables to avoid damage and/or limiting their

How to install a drop wire clamp?

Whether you're a large telecommunications company or a small - scale installer, Jera Line has the products and expertise to meet your needs. In conclusion, the installation of a drop wire



Clamp-on temperature sensor, Clamp-on temperature

Find your clamp-on temperature sensor easily amongst the 32 products from the leading brands (KROHNE, LEEG, Sensata,) on DirectIndustry, the industry

Install A Temperature Gauge , Best Practices

How To Install A Temperature Gauge For Optimal Performance? Key Takeaway To ensure accurate readings and long service life, a temperature gauge must be installed correctly. First, identify the best

How to fix sensors on fiber optic temperature measurement devices in



At the same time, the sensing head can maintain good contact with the copper bar, making temperature measurement more accurate. The clamp fragments are made of non-magnetic

How to Install Fiber Fast Connector: Essential Guidelines

By following this blog's guidelines, you can achieve efficient and reliable fiber optic connections with fiber fast connector.

General Optical Fiber Cable Installation Considerations

General Optical Fiber Cable Installation Considerations Some key considerations for installing optical fiber cable are highlighted below. Failure to follow these guidelines may result in damage or



Standard Installation and Inspection Guidelines for

Ensure the explosion-proof cable gland is properly installed and securely tightened. The gland must be oriented downward or sideways, not facing upward, to prevent

Testo Clamp temperature probe kit (fixed cable, NTC)

The probe's fixed cable has built-in kink protection - making it exceptionally robust and break-proof. Use the fixed cable clamp probe (NTC) to accurately measure

thermistor-mounting-101:-best-practices-for-accurate



Thermistor mounting refers to how you physically attach a thermistor to the object or environment you're measuring. Think of it like placing a

Using optical fibers for temperature measurement, Part

Add fiber to the temperature-measurement menu In recent years, the development of high-purity, consistent, hair-thin light conduits made of optical

Corrosion-Resistant Cable Mounting Kits

This document provides specifications for various mounting materials for securing sensor cables, including: 1. Plastic clamp sets that securely fix sensor cables to



TSM clamp-on RTD sensor , Installation guidelines

Get installation guidelines, configuration tips, and FAQs for ifm's TSM clamp-on RTDs and TP temperature plugs. Learn how to attach sensors, connect

MAN-00098 Hot Spot Temperature Sensor Installation Guide

Where will the sensors be installed? The sensors should be installed to be in contact with the winding's hottest spot. Fix it safely such that the winding cannot crush it if there is a sudden change in current

Contact Us

For datasheets, pricing, or custom optical networking solutions, please visit:
<https://www.entrenamientointeligente.es>