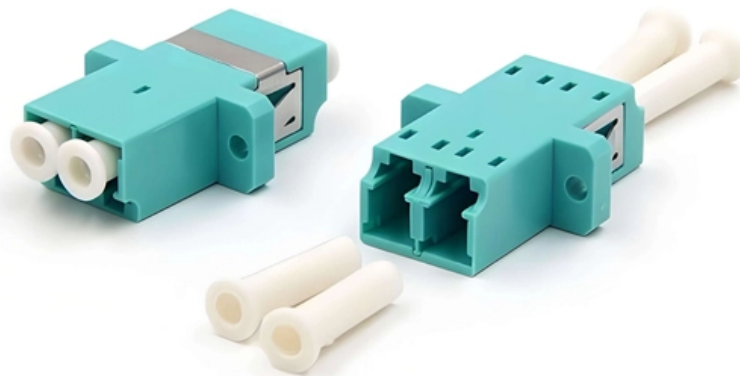


Huawei Network Rack Cabling





Huawei Network Rack Cabling

Huawei SmartAX MA5800-X15 Quick Installation Manual

View and Download Huawei SmartAX MA5800-X15 quick installation manual online. SmartAX MA5800-X15 network hardware pdf manual download.

Huawei 19 Inch Rack Guide: How to Choose the Right One

A practical, no-fluff guide to selecting a Huawei 19 inch rack--covering dimensions, certifications, compatibility, and real-world trade-offs for telecom, datacenter, and edge deployments.



Standard IT Cabinet

A Huawei cabinet complies with the International Electrotechnical Commission (IEC) 60297-1 standard and is an assembled cabinet for ease of expansion. The distance between its front and rear

Learn Network Cable Management for Home Racks

In this video I build a network rack from scratch, explaining along the way the each step and the reason I am doing it the way that I am. This is intended for a home network, not a commercial

Huawei N63E-22 Rack 21" cabinet 47U

The power cables and subscriber cables are led into the N63E-22 cabinet from the top or



bottom of the cabinet. The cables of the N63E-22 cabinet can be routed in the overhead cabling mode or the

Cable Connections to the Power Supply and Distribution System

If the cable length needs to be adjusted, adjust the cable to a proper length based on the actual position of the power distribution module, crimp the terminal, and then connect the cable. Crimp a cord end

Checking the Cabinet or Rack

Cabling in the cabinet Record the cross-sectional area of the cabling channels on both sides of the device. Check whether the cross-sectional area meets the requirements for routing network cables



Network & Server Rack Setup Best Practices

Learn network & server rack setup best practices. Get tips for how to setup a server or network rack, how to layout your equipment, & enhance your

Structured Cabling in IT Racks: An Essential Art in 2025

Discover the structured cabling essentials for IT racks in 2025. Learn installation, benefits, and best practices for optimal network performance.

Effective Racking and Cable Management , Kudox

Effective racking and cable management are crucial components of any well-organized IT infrastructure. They ensure efficient cable handling and



Scenario: Cabinet/Rack Mounting

Cabinet/Rack Mounting: Using Front Mounting Brackets or Cable Management Frames and Rear Mounting Brackets Context This installation method applies to S5710-HI switches. Follow these

Installing Cable Racks and Mounting Ears

HUAWEI AntiDDoS8000 V500R005 Hardware Description Installing Cable Racks and Mounting Ears Mounting ears are used to fix a device to the cabinet, and cable racks are used to

Huawei DP0B02RACK00 A66e Network Rack



2200x600x650mm

The Huawei DP0B02RACK00 is a high-quality A66e cabinet designed to meet the demands of modern ICT infrastructure. This robust cabinet, with dimensions of 2200mm in height, 600mm in width, and

Huawei NetHos Cabinet Brochure , PDF

Accessories04CableManagementAccessoriesHorizontalCableRack:Therackprovides horizontal cable management and is usually installed in the back of the

Network Cable Management And Installation For A Office Setup

office network setup and 22 u rack installation and cable management dahua 24 port switch Aruba 48 port switch mini pro patch paneltplink 48 port switch 24



How To Wire a Server and Network Rack , Tips & Best

Best practices for network rack and server rack cabling If improving network reliability and performance are important to you (and you would not be

Scenario 1: Installing a Device in a Cabinet or Rack

When mounting the device in a cabinet or rack using mounting brackets, ensure that the mounting brackets are aligned horizontally on the left and right mounting rails. If the mounting brackets are not

Huawei N63E Rack 2200x600x300mm Assemble , Router-switch



What accessories are available for the N63E Assemble Rack? Accessories for the N63E Rack include additional shelves, cable management arms, and cooling solutions, which enhance its functionality

Create a rack diagram with the best FREE Network

After successfully creating your network rack, it's time to share your server rack plan with your colleagues and print it. With our Server Rack Diagram Template, you

Equipment Layout in the Network Cabinet

Relocate the cable manager in the rear door position as high as the device to be installed. Use an insulated flat-head screwdriver to insert floating nuts into the device mounting holes in the rack rails



Excel Environ Racks

Excel Encyclopaedia Further information about Excel's Environ Racks can be found online in the Excel Encyclopaedia. The Excel Encyclopaedia is a comprehensive

Installing a UPS (Rack-Mounted Scenario)

3.2.1 Installing a UPS (Rack-Mounted Scenario) Context This section describes the rack-mounted installation for one 6 kVA UPS and two lithium batteries. The actual cabling may vary.

Network Server Racks - Primus Cable

Racks are a lucrative method of keeping all networking components contained and organized within a central area, especially when floor space is limited. Simplify



management and expedite the

Contact Us

For datasheets, pricing, or custom optical networking solutions, please visit:
<https://www.entrenamientointeligente.es>