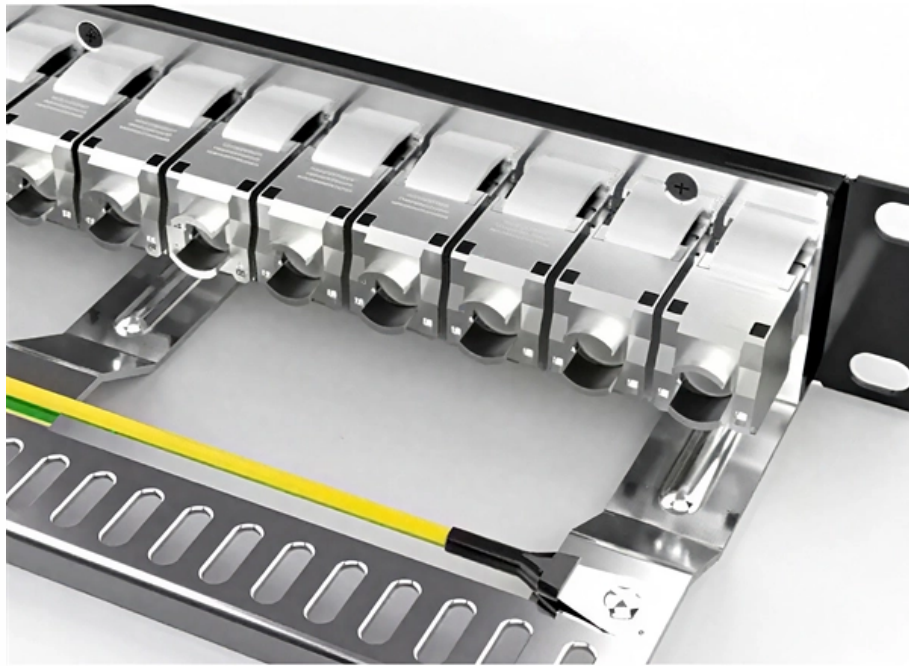


Huawei optical module 10ge





Huawei optical module 10ge

SFP+10GE-LH10-SM1310

Huawei compatible SFP+10GE-LH10-SM1310 (02311MUU) is SFP+ (Small Form factor Pluggable) Transceiver, operating over Double Fiber Single-Mode Fiber (SMF) optical cable. It has minimum

Huawei S6720-LI Series Switch Optical Module Solutions

The S6720-LI series, a new generation of Huawei's compact all-10G box switches, is designed for use in campus networks and data center 10G access. The S6720-LI series switch



Huawei OSX010000 Optical Transceiver SFP+ 10G

Explore the Huawei OSX010000 Optical Transceiver SFP+ 10G Single-mode Module for high-speed data transfer. Ideal for tech solutions, order today!

Buy Huawei GE/10GE Optical Module Best Price

Inquire Huawei GE/10GE Optical Module Price, Wholesale Huawei GE/10GE Optical Module with best discount for Huawei OLT Uplink Board

SFP-10G-ER-SM1270-BIDI 02311BJC Huawei Optical Transceiver

SFP-10G-ER-SM1270-BIDI 02311BJC Huawei Optical Transceiver 437.00 SFP-25G-eLR-BXD1-I 02314LCK Huawei Optical Transceiver \$437.00 Optisk transceiver,



SFP28,25G,BIDI Single-mode

SFP-10G-LR, Huawei SFP+ Optical Transceiver, 10G,

The Huawei Optical Transceiver SFP-10G-LR is a versatile and high-performance 10G SFP+ module. Designed for single-mode fiber, it offers reliable 10km

OSX010000 SFP+ OSX010000 price and specs

It can meet the applications of Fibre Channel 8.5G and Ethernet 10G in accordance with the ANSI T11 protocol. Huawei's 10G SFP+ optical module is about 30%

10GE SFP+ Optical Modules



If the SFP-10G-ER-1310 is connected to a 10Gbase-ER standard optical module (1550nm, 10GE, 40km), the maximum transmission distance is only 20km due to different specifications such as wavelength

Optical Modules in General-Purpose Computing Scenarios

Huawei offers a comprehensive portfolio of pluggable StarryLink optical modules for data center networks, with various models providing flexible plug-and-play solutions tailored to diverse interface

Huawei SFP-10G-SR 10G SFP+ 850nm 0.3km Module

Deploy Huawei SFP-10G-SR 10G SFP+ MMF 850nm 0.3km LC to stabilize short-range 10GbE links and ensure Huawei switch compatibility. Buy online now.



How to Choose the Right Optical Transceiver in 2025

Learn how to select the right optical transceiver for your switch or router. Compare SFP, SFP+, QSFP28, Cisco SFPs, and Huawei modules with

Huawei OPTICAL Price

72 port 25GE, 6 port 100GE SAN light interface board "optical module combination package 1 (including 24 * 10GE port RTU, 2 * 100GE port RTU, 3 * 24 * 10GE upgrade to 3 * 24 * 25GE capacity upgrade

XGSPON ONU Stick with 8311 Firmware, 10G SFP

XGSPON STICK Optical Module (SFP+ PON ONU), designed to replace SFU modems, it



delivers Gigabit/10 Gigabit optical-to-electrical conversion for PON

Huawei H802X2CS MA5600T 10GE/GE Uplink Board

Buy Huawei MA5680T MA5683T 2-port 10GE/GE uplink board H802X2CS, configure H802X2CS with 10km 40km 80km SFP+ optical module, download H802X2CS

Huawei SFP+ Optical Transceiver Module (10G)

I am selling a Huawei SFP+ optical transceiver module (10G). I bought it recently and it has never been used. The module is in good condition with no physical d

S210I-8P4SX (98012933)



Power Supply System The device can use a single power module or dual power modules for 1+1 power redundancy. It can be connected to a PAC240S56-CN power module.

Optic Modules Datasheet

Features and Benefits The following table lists the different pluggable optic modules and supported platforms, along with the technical specifications for each.

SFP-10G-LR-1310nm 20km LC DDM Optical Transceiver

What Is SFP-10G-LR-1310nm 20km LC DDM Optical Transceiver Module? SFP-10G-LR-1310nm 20km LC DDM Optical Transceiver Module CISCO, HUAWEI,



How To Read Optical Module Information On Huawei Switches

The following uses the Moduletek SFP-10G-LR module connected to a Huawei S6700 switch as an example to introduce how to read information of the connected optical module on a Huawei switch.

How To Switch Optical-Electrical Mode On Huawei

For related commands, refer to How to Read Optical Module Information on Huawei Switches. Note: By default, the optical interface of the Combo interface is in the

10 Gbit/s SFP+ Optical Modules

10 Gbit/s SFP+ optical modules apply to 10 GE optical ports. The wavelength can be 850



nm, 1310 nm, or 1550 nm, and the transmission distance ranges from 0.5 km (0.31 mi) to 80 km (49.71 mi).

Optical Module Encapsulation Types

XFP/SFP+ Optical Module A 10G small form-factor pluggable (XFP) module is a standard, hot-swappable, protocol-independent, and high-speed optical module defined by industry organizations.

OSX010000

If you have any questions about this Huawei Optical Transceiver, SFP+, 10G, Single-mode Module (1,310 nm, 10 km, LC) OSX010000 or any other item that we carry



What Is an Optical Module and Its FAQs (V200)

What Is an Optical Module and Its FAQs (V200) Describes what an optical module is and FAQs, including the fundamentals, appearance and structure, key performance counters, common types,

Contact Us

For datasheets, pricing, or custom optical networking solutions, please visit:
<https://www.entrenamientointeligente.es>