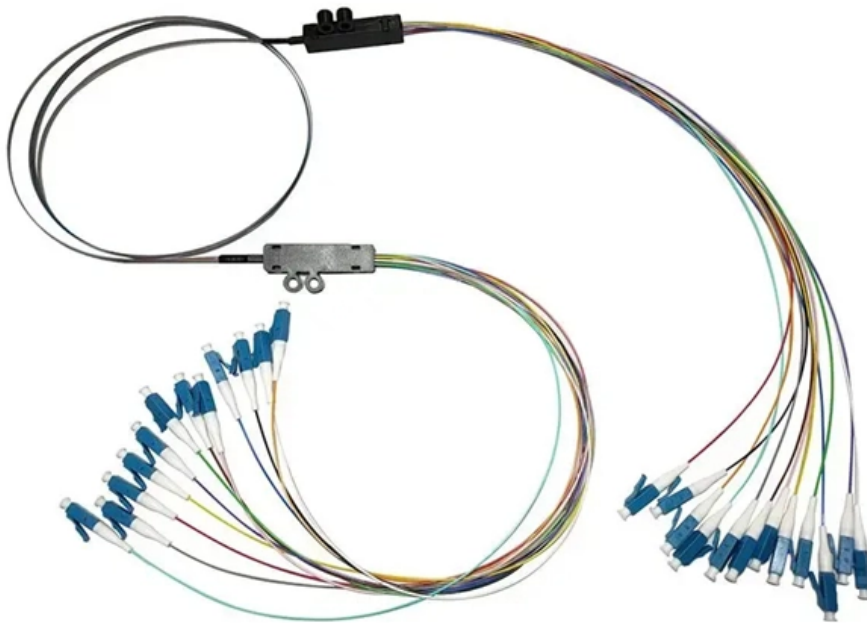


Hungarian delivery time edge data center explosion-proof type





Hungarian delivery time edge data center explosion-proof type

Unlocking the power of Edge computing through smarter

Data center teams should consider liquid cooling as a more advanced way to address the heat challenge. At the same time, Edge facility

Edge Data Center Solutions

Deployment-ready contained row of racks for Edge Data Centers. Pre-engineered solutions from Vertiv include virtually everything needed to keep IT infrastructure running 24/7. Deployment-ready



Edge Datacenter Market Research Insights 2023

According to GVR, the market of edge data centers is expected to nearly triple by 2025. Be great to the potential for these smaller, locally located data centers to

How to Build A High-performance Edge Data Centre?

This article introduces the methods of building a high-performance edge data centre, covering its definition, benefits, and key steps and solutions for deployment.

What is edge computing?

Edge computing is a distributed computing framework that brings enterprise applications closer to data sources such as IoT devices or local edge



Securing Edge Data Centers: Challenges and Solutions

Here's why edge data center security can be challenging, and what data center operators can do to mitigate the risks.

A FUTURE AT THE EDGE: EDGE DATA CENTER WORKING GROUP SOLUTIONS BRIEF

OVERVIEW Security is critical to the success of an Edge Data Center (EDC). Both physical security and cyber security should be considered and addressed when selecting a location and building a new

What Are Edge Data Centers?



Edge data centers are compact computing facilities strategically positioned near end-users to minimize data travel distance and processing time.

What is an Edge Data Center? (With Examples)

Edge data centers offer compute and storage at the network limits, improving performance, costs, and security for market applications and services.

A FUTURE AT THE EDGE: EDGE DATA CENTER WORKING

We focus on potential locations for two types of edge data centers: network-based and establishment-based. There is a potential third type of EDC - device-based EDCs - that are outside the scope of this



Edge data centers & logistics

With their smaller footprint and greater agility, edge data centers are designed to process time-sensitive data faster while sending less critical information to the larger, centralized data centers that run big

Hungary Data Center Market Size, Share & 2030 Trends

Outside these urban centers, rural Hungary is witnessing micro-data-center rollout aligned with the Digital Village program. Units as small as 150 kW

What are Edge Data Centers? , Detailed Guide



Edge data centers are small-scale, nearby facilities that carry out the processing of sensitive data and store information near the end user. Read on to learn more

Modular Data Center

Edge Modular Data Center: a rugged, scalable, cost-effective, and highly-efficient data center product designed and optimized specifically for mission critical

Introduction to Distributed Edge Data Centers

Distributed edge data centers are small-scale data processing facilities located closer to the end-users and devices they serve. Unlike traditional data



Edge Data Center Solutions , nVent

Modular Solutions for Rapid Deployment: Our modular edge data center designs allow for quick and efficient deployment. These pre-fabricated units can be easily transported and set up in various

What is an Edge Datacenter , Glossary , HPE Netherlands

An edge data center is closer to end users or devices, reducing data transit time and latency. Applications needing real-time processing or minimal latency benefit from local data handling. Edge

Edge Data Centers

Whether your edge data centers are containerized, sitting in a colocation facility, on-premises at your organization or at the base of a cell tower, we'll help you build



Edge Data Centers: Complete Guide to Edge

Edge data centers process data close to end users, reducing latency from hundreds of milliseconds to single digits. Learn how edge computing works,

Edge Data Centers 2025

The first wave of edge deployments emerged alongside the rise of mobile broadband and IoT. Telecom operators began placing micro data centers

What Is Edge Computing? Everything You Need to



Only the result of that computing work at the edge, such as real-time business insights, equipment maintenance predictions or other actionable

What Is Edge Computing? , Microsoft Azure

Learn what edge computing technology is, how it works, and why organizations across industries are using edge computers to transform their operations.

Edge Data Center Solutions

How Vertiv™ Solutions Simplify Deployment Pre-engineered systems simplify edge deployments with a repeatable and scalable solution, enabling business agility for future growth.



What Is an Edge Server and How Does it Work?

Instead of sending unprocessed data to and from a data center, these devices process raw data and return content directly to client machines. As a

Edge Data Centers 2025

While definitions vary, an edge data center typically combines compact physical footprint, high connectivity, and strategic location. It brings

Edge Computing: from standard to actual infrastructure deployment

Introduction Edge Computing is widely recognized as a key technology, supporting innovative services for a wide ecosystem of companies, ranging from operators, infrastructure owners, technology



Contact Us

For datasheets, pricing, or custom optical networking solutions, please visit:
<https://www.entrenamientointeligente.es>