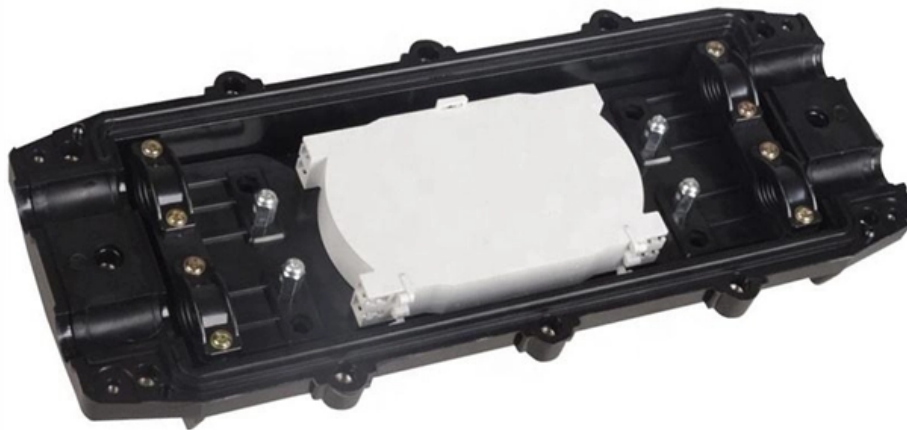


IDC Aggregation Switch Selection





IDC Aggregation Switch Selection

Stratix 5200 and 5800 Managed Switches User Manual (1783-IN012)

Describes how to install Stratix 5800 switches and expansion modules. Provides context-sensitive Help for pages within the WebUI. Describes how to configure and use EtherNet/IPTM devices with a Logix

Gartner , Delivering Actionable, Objective Insight to

Gartner provides actionable insights, guidance, and tools that enable faster, smarter decisions and stronger performance on an organization's mission-critical priorities.



GWN78XX(P) - Link Aggregation Guide

To configure a static link aggregation on GWN78xx network switches, please follow the below steps: On the first switch (Switch A), navigate to Web UI -> Switching -> Link Aggregation ->

Configuring Route Aggregation , Junos OS , Juniper

The route aggregation methodology helps minimize the number of routing entries in an IP network by consolidating selected multiple routes into a single route

Data Centre Aggregation Switch Specification , Aruba Apps

This solution lets the switches present as one virtualized switch in critical areas. Configuration synchronization is one aspect of this VSX solution where the primary switch



EOS 4.36.0F

Arista switches support Multi-Chassis Link Aggregation (MLAG) to logically aggregate ports across two switches. For example, two 10-gigabit Ethernet ports,

Aggregation Switch: Increasing the Priority of Special Traffic

Aggregation switches set up stacks to implement device-level backup and increase the interface density and forwarding bandwidth. Before deploying QoS, ensure that the campus network is connected. For

What is Switch Aggregation, Its Role and Selection

This article wraps up "what is switch aggregation" and suggestions for choosing an aggregation switch. By considering these factors, network administrators can make informed

Port Aggregation Configurations

To allow port aggregation, the basic configuration on all the ports must be consistent. The following list details the basic configuration parameters that should be consistent on all the ports: STP

DAS three-phase switch and iDC control guideform specification

This specification describes the features and ratings of the DAS switch. The DAS switch shall be a three-phase electronically controlled switch suitable for pole mounting. It shall utilize shatter-resistant



Support

After you enable BFD on an aggregate interface, each Selected port in the aggregation group establishes a BFD session with its peer port. BFD operates differently depending on the aggregation

Link Aggregation Configuration Commands

When configuring port aggregation, you can select the LACP negotiation mode. In Active mode, the port will transmit the LACP packet actively for LACP negotiation; In passive mode, the port responds to

EOS 4.36.0F



High availability data center topologies typically provide redundancy protection at the expense of over-subscription by connecting Top-Of-Rack (TOR) switches and

What Is an Aggregation Switch and How to Choose?

An aggregation switch is a network device that consolidates traffic from multiple access switches, wireless access points, or other edge devices and

S6320 Series 10GE Switches

The S6300 can function as an access switch in an Internet data center (IDC), aggregation switch on a Metropolitan Area Network (MAN), or core/aggregation switch on a campus network. The S6320 has



Link Aggregation and Ethernet Bonding Feature Overview and

Link aggregation interfaces have names like 'po1' and 'sa1' depending on the aggregation method in use. Ethernet bonding is used to refer to static or dynamic (LACP) aggregation configured on router

Link Aggregation: Static vs Dynamic, LACP, and MLAG

Understand how link aggregation (LACP, MLAG, static vs dynamic) improves bandwidth and redundancy. Learn configuration steps on Cisco and

Support



Restrictions and guidelines: Mixed use of manual and automatic link aggregation configuration Ethernet link aggregation tasks at a glance Configuring a manual link aggregation Restrictions and guidelines

JavaScript Grid: Grid Options Reference , AG Grid

Grid Options reference for JavaScript Data Grid. Browse all Grid Options used to configure selection, pivoting, aggregation, filtering, editing, keyboard navigation.

Support

Configuring a dynamic aggregation group to use port speed as the prioritized criterion for reference port selection Configuring load sharing for link aggregation groups Setting static load sharing modes for



Data Center Access Layer Design

Some access layer designs permit a larger number of access layer switches per aggregation module than others. Inter-switch link bandwidth scaling--Some access layer designs send all traffic towards

Configuring Aggregation and Access Switches to Be Managed by the

On the core switch, configure a management subnet for aggregation and access switches, enable the DHCP server function on the gateway interface of the subnet, and enable the

What Is an Aggregation Switch and How to Choose?

An aggregation switch is a network device that consolidates traffic from multiple access



switches, wireless access points, or other edge devices and forwards it to

Contact Us

For datasheets, pricing, or custom optical networking solutions, please visit:
<https://www.entrenamientointeligente.es>