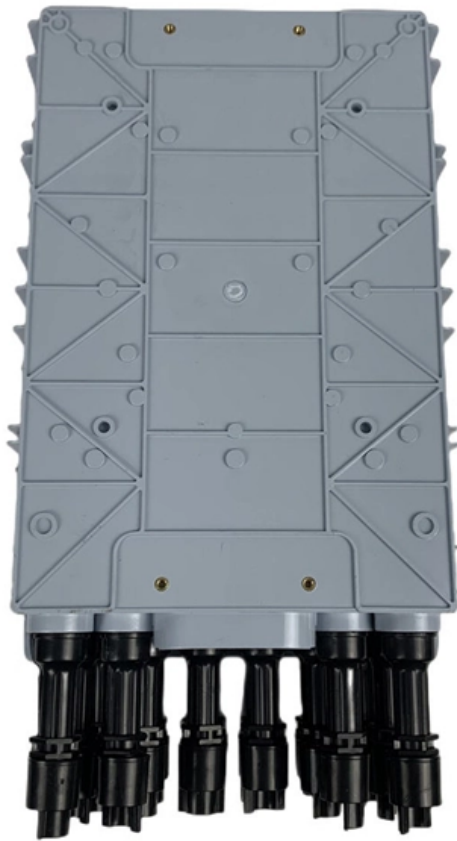


Increase the height of the distribution box frame





Overview

Determining if a waterproof distribution box offers height adjustability depends on the specific mounting system and enclosure design. While the internal rail height is often fixed, external positioning requires strategic planning to meet safety standards and site-specific drainage needs. Ensure safe placement: install in dry, accessible areas with good ventilation and at appropriate height (typically ~1. When preparing the tools and materials that are needed for installation, an electrical enclosure is a.



Increase the height of the distribution box frame

The Norden High Density Floor Standing Fibre Optic Distribution Frame

The Norden High Density Floor Standing Fibre Optic Distribution Frame is a durable and versatile solution designed for efficient fibre management in high-demand environments. Made from high

How to Improve the Installation Quality of Distribution Boxes

Learn key methods to enhance distribution box installation quality, including location, height, wiring, and safety compliance.



CT4000 IG

All Leviton Warranty Terms & Conditions apply. The Leviton HDF3168 Fiber Distribution System is an optical distribution frame that is designed for the high-density applications in the Main Distribution

What is the installation height of distribution box?

The outdoor distribution box should be firmly installed on the bracket or foundation. The height of the bottom of the box should not be less than 1.0m from the ground, and measures should

Understanding Distribution Boxes: Your Guide to Power



Weatherproof Distribution Boxes These serve specific outdoor purposes, with rain, dust, and extreme temperatures sealed shut, protecting any

Area distribution boxes with connectors

Area boxes can be installed in technical flooring or in false ceilings. Area boxes are offered in Cat. 5e and Cat. 6 and should be selected according to the size of the network.

The installation requirements for the distribution box

Learn how to install a distribution box safely and correctly. Covers wiring, placement, standards, and expert tips for a compliant setup.



How to Install a Distribution Box--A Comprehensive

Whether you are an electrical contractor or a construction brigade, knowing how to properly and safely install distribution boxes is the basis of

Cable Distribution Box Layout: 10 Industrial Strategies

The installation height of the distribution electrical box should be controlled at 1.2~ 1.5 meters, which is convenient for operation and maintenance. At least 1 meter of space should be

Distribution boards components

Distribution boards (generally only one in residential premises) usually include the meter (s) and in some cases (notably where the supply utilities impose a TT earthing system and/or tariff



News

While a common recommendation is to position the bottom edge of the distribution cabinet approximately 1.4 meters above the ground, this height may vary based on the convenience of

What is the Ideal Installation Height for a Distribution Box

Wall-mounted boxes should be 4.5 to 5.5 feet high. This height makes it easy to reach without bending or stretching. Outdoor boxes need to be at least 3 feet

How to build an Intermediate Distribution Frame



The intermediated distribution frame (IDF) plays a critical role in providing your internet & WiFi. We'll walk through how to design and build one.

The Best Solution to Install Components Inside The

The trickiest part of installing inner components of a distribution box is that the components' heights are irregular. E-Abel's flexible mounting bracket can

Talking About The Installation Specification Of

The application of the distribution box, the rated current of the distribution box is 40-125a, the rated working voltage is 220 V and 380 V, the height is not more than



Installation Height And Location Selection Requirements For Ground

This height setting fully considers the ergonomic characteristics of operators, allowing routine maintenance work such as switch operation, circuit inspection, and instrument reading to be

Case Study-How to Customize a Distribution Box for

Customizing a distribution box is crucial for meeting project specifications, improving safety and functionality, and protecting against

Installation points of household distribution box



The distribution box of household distribution box should not be installed too high. Generally, the installation elevation is 1.8m to facilitate operation; the electric pipe

How to Install a Distribution Box--A Comprehensive

The best height for installing residential distribution boxes is 1.5 meters above the ground, while for industrial distribution boxes, the height

Use Walton DB box of correct size and thickness , Walton Blog

The distribution box's size has been set aside. If the incoming line is less than 10 square and the number of switch digits is less than 20, the width of the switch is added and the width of the electric box is



Dimensional Measurement of Distribution Board,

This section explains the latest dimensional measurement technologies for the enclosures of distribution boards, switchboards, control panels, and cubicles

How to determine the size, installation method and

(1) Wiring method of distribution box 1) Generally, the incoming line of power distribution box adopts five wire system, that is, a, B and C three-way phase line

Cable Distribution Box Layout: 10 Industrial Strategies

Optimize your cable distribution box layout for safety and efficiency. Learn industrial best practices using Chuanli's IEC-standard outdoor and custom boxes.



DISTRIBUTION BOARD OR JUNCTION BOX

This article is about Distribution Board or Junction Box Support Frame Installation in Petrochemical Plants. Distribution Board or Junction Box Support Frame

Distribution box

Expanding an existing distribution box is a common scenario, whether it's by adding a new circuit for the garage, connecting a wallbox for an electric car or integrating modern home technology.

How to Install a Cable Distribution Box Safely and



In modern electrical systems, cable distribution boxes (also known as electrical distribution boxes or distribution boxes) play a crucial role as the key

How to build an Intermediate Distribution Frame (IDF)

The intermediate distribution frame (IDF) plays a critical role in providing your internet & Wi-Fi. We'll walk through how to design and build one.

Adjustable Height Option For Waterproof Distribution Box Installation

Can Waterproof Distribution Box Height Be Adjusted? Standard enclosures feature internal mounting plates with fixed depths to maintain a tight seal. However, height adjustment occurs during



Contact Us

For datasheets, pricing, or custom optical networking solutions, please visit:
<https://www.entrenamientointeligente.es>