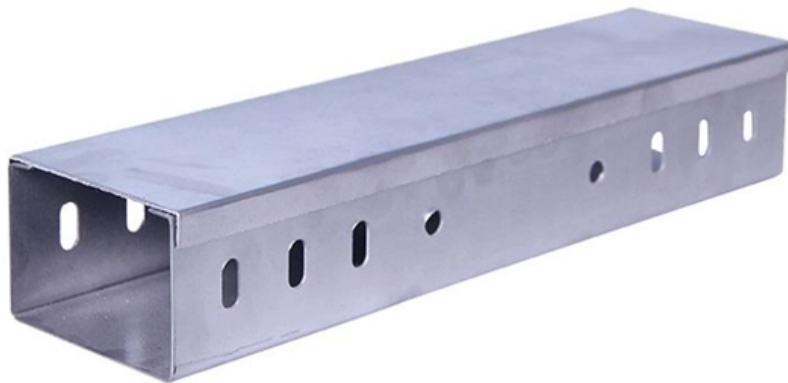




EIT Opto-Routing

Installation Plan for Core Switches





Installation Plan for Core Switches

Core switch replacement

I used an Aggregation switch, not as a core, but as a stand-alone for iSCSI traffic. It was purchased as a temporary switch because of equipment that required 10G connections prior to my

Core Switch swap-out

I will be swapping out an old core switch, 3750 G for a new one a 3850 G. The Team Lead want's me to put together a Project Management document outlining everything that will be done,



Core switch replacement

My current core switches (2 x Aruba 3810M) are 6 years old and limited in their connection options. Adding in SFP+ modules will not give me enough connections for the servers,

Introduction to Core Switch Configuration

A switch that functions as part of a router and operates at the third layer of the OSI network standard model, the network layer. The most important purpose of the layer 3 switch is to speed up the data

EIM Session Plan: Wiring Installation Skills

This document provides a session plan for a unit of competency on installing wiring devices for floor and wall mounted outlets, lighting fixtures, switches, and auxiliary outlets. The session plan includes 25



How to plan for a campus core switch refresh: Basic requirements

Growing traffic demands are putting more pressure on campus core Ethernet switches. Here in the first part of this series, we examine the steps needed to plan for a core switch upgrade.

Installing and Configuring Network Switches

Comprehensive Guide for IT Systems Field Technicians: Installing and Configuring Network Switches In today's fast-paced digital world, effective IT system installation and disposal are critical for



SME Network Solution Typical Configuration Examples

"Gateway (AR720) + Core Switch + Access Switch + AP + AR180" Networking: Huawei eKit Cloud Management "Gateway + Core Switch + Access Switch + WAC + AP" Networking: Local Entire

Prepare Switches , Validated Solution Guide

Prepare switches for deployment in Aruba Central for building a Two-Tier Data Center. The L2 Two-Tier Data Center uses an MC-LAG core for

The Ultimate Guide to Network Switch Installation Do's

The Ultimate Guide to Network Switch Installation Do's and Don'ts provides essential information for a successful installation, including choosing the



Core Switch vs. Distribution Switch vs. Access Switch

Core Switch vs. Distribution Switch vs. Access Switch: Understand Their Roles in Ethernet Networks Ethernet networks are growing and becoming more complex,

Understanding Core Switch: What It Is and How to

In the realm of system networking, three key types of switches are frequently mentioned: access switches, aggregation switches, and core switches.

install-guide



WARNING: Installation and removal of the unit must be carried out by qualified personnel only. **WARNING:** When connecting this device to a power outlet, connect the field ground lead on the tri

Network Installation & Configuration: The Ultimate Guide

Wired network installation creates a robust, secure, and stable digital ecosystem for businesses large and small. [Click to learn more!](#)

Switch Installation

Switch Installation For initial switch setup, assigning the switch IP address, and powering on information, see the [switch getting started guide on Cisco](#) .



How to plan for a campus core switch refresh: Basic requirements

Big campus core switch refreshes typically occur every 5 to 10 years, or longer, depending on the switch. When evaluating switches, factor in future requirements.

Switch Installation

Switch Installation This chapter describes how to install and connect a Catalyst 3650 switch. It also includes planning and cabling considerations for stacking switches.

LAN design

How would I use them as core switches? I was hoping someone could point me in the



right direction on the best way to connect the switches up, i.e. network design, cabling (fibre uplinks)

How to install a dormakaba Switch(TM) Core

Get the full official dormakaba Switch(TM) Core installation instructions by downloading the free BILT app and searching "Switch Core." Install it right the first time using the BILT 3D interactive

8 Steps to Configure Your Network Switch

Learn how to setup a network switch with ease. Switches allow you to send and receive information efficiently and securely. Get setup today!



Replacing one core switch with two new core switches

I will have to replace our old core Cisco switch C4506-E with two new core switches C9500 that will be located in two different server rooms. Currently there is one server room and our

SME Network Solution Typical Configuration Examples

"Gateway + Core Switch + Aggregation Switch + Access Switch + WAC + AP"
Networking: Local Entire Network Deployment (EasyWeb) "Gateway + Core Switch + Aggregation Switch + Access Switch +

Prepare Switches , Validated Solution Guide

Review the Installation Guide before installing and deploying the switches. Carefully



review requirements for power, cooling, and mounting to

Core Switch Change

Hi all. We will be swapping our existing core switch for a new one and I want to get some verification that the procedure I have in mind is a good one to take. We currently have the following

[serenalindquist99/server-core-switch-lab](#)

? Server/Core Switch Replacement Lab This lab simulates a real-world enterprise network upgrade involving the replacement and configuration of core switches, port migration, ACL deployment, and



Colombia CORE Switch Refresh Plan

The project aims to upgrade to new switch models to meet network needs, ensure support, and allow for future software updates. Key deliverables include a testing

Introduction to Core Switch Configuration

Switches should be able to achieve wire-speed switching, which is the rate at which data is transferred on a transmission line, to minimize switching bottlenecks.

Colombia CORE Switch Refresh Plan

This project management plan outlines the scope, objectives, assumptions, constraints, deliverables, planning, budget, organization, risk management,



Supply, Installation, and Configuration of Core Switch

Supply, Installation, and Configuration of Core Switch 1. TECHNICAL REQUIREMENT AND SCOPE OF WORKS Planning Review the existing network infrastructure and topology. Determine the required

Contact Us

For datasheets, pricing, or custom optical networking solutions, please visit:
<https://www.entrenamientointeligente.es>