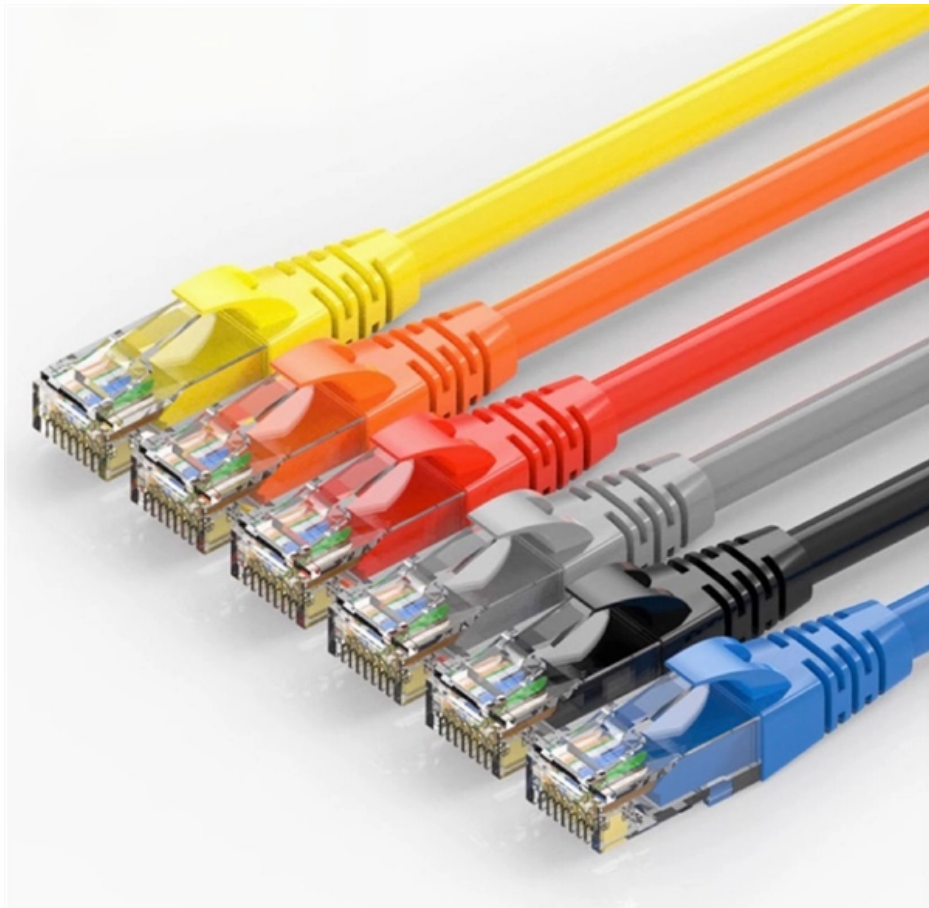


Junction Box Mounting Bracket





Junction Box Mounting Bracket

Sol Tutela Outdoor Waterproof Electrical Box Junction Box

About This [EASY TO MOUNT] The outdoor waterproof electrical box includes mounting plate that allow you to mount your board or device in the project box easily. Also come with 4 stainless steel wall

Junction Box Pipe Mount - SS304 Universal Bracket

Mount a junction box and light fixture together on any pipe, fence, or conduit. Stainless steel universal bracket for industrial, outdoor, and camera mounting



Amazon : Security Camera Junction Box

Universal Bullet Security Camera Junction Box Mount Bracket Plastic Rainproof Junction Box Mount Bracket for IP Camera Electric Enclosure, Indoor/Outdoor Wall Cable Junction Base Boxes (3 Pack)

Gray Electrical Junction Box with Mounting Plate IP67

IP67: The junction box is IP67 waterproof and weatherproof, effectively blocking splashing water, rain, etc. Whether indoor or outdoor, our electrical junction box can be used easily. Mounting Plate:

Mounting Bracket with Junction Box Mount

Durable, Corrosion Resistant Cast Aluminum Construction For Quicker Installation and Increased Efficiency Mount Junction Box (sold separately) Directly to Bracket



Compatible with Bullet Cameras Universal Bullet Security

Mounting type: Surface Mount; Electric enclosure material: Metal & Rubber; Main color: White. Works with surveillance camera (You can drill holes on the plate to match different cameras). [EASY INSTALLATION]-This sturdy junction box can save your worries of cracking the bracket by mistake and it is reusable. Solid

WiTi Universal Wall Mount Bracket for Dome Security

WiTi Universal Wall Mount Bracket for Dome Security Camera, Deep Base Junction Box Cable Management Mounting Case, Outdoor Indoor CCTV IP Surveillance



Dome Camera Mounting Bracket Mounting Bracket Easy to Install on

?Innovative Design?: Featuring an internal cable design, this camera base junction box offers good waterproof and rainproof capabilities, effectively protecting your camera and cables from

16" BETWEEN STUD 3-BOX MOUNTING BRACKET -20PK

Southwires 16" 3-POSITION BOX MOUNTING BRACKET used to position up to three junction boxes with standard device rings between wood or metal studs.

Cablofil EXSBDGS Pre-Galvanised Steel Mounting Plate Bracket



Steel mounting plate bracket for secure fixing of GS junction boxes within cable support systems, providing durable and corrosion-resistant installation for standard industrial applications.

Aluminum Alloy Wall Mount Bracket for Security CCTV Camera

Aluminum Alloy Wall Mount Bracket for Security CCTV Camera - Deep Base Junction Box Mounting Case, 170 x 140 x 90 mm, Indoor/Outdoor Use, White

PACKOVE Stainless Steel Bracket Clamp for Secure and Sturdy Mounting

Free delivery and returns on all eligible orders. Shop PACKOVE Stainless Steel Bracket Clamp for Secure and Sturdy Mounting of Project Box and Junction Box Pole Mounting Kit Including Hardware



Luocute Solar Panel Mounting Brackets, ABS Corner Bracket Kit

WIDELY COMPATIBLE: This solar panel mounting bracket kit includes ABS angle brackets and a dual hole junction box, suitable for RVs, vehicles, sheds, garages, and boat decks.

Mounting Brackets for Secure and Easy Installation

Discover mounting brackets designed for quick installation and increased structural strength. Ideal for securing JB junction boxes and heating components, our

Junction Box Pipe Mount - Stainless Steel Universal Bracket , JBPM



Mount a junction box and light fixture together on any pipe, fence, or conduit. Stainless steel universal bracket for industrial, outdoor, and camera mounting applications.

Sol Tutela Waterproof Outdoor Electrical Box Junction Box

About This PACKAGE - 1 x Weatherproof Junction Box, 1 x Mounting Plate, 2 x 1/2" NPT Cable Glands, 4 x wall brackets. IP67 GRADE - IP67 waterproof grade, which means dust-tight and protected from

Sol Tutela ?Only Compatible with Bullet Cameras? Universal Bullet

Mounting type: Surface Mount; Electric enclosure material: Metal & Rubber; Main color: White. Works with surveillance camera (You can drill holes on the plate to match different cameras). [EASY



Amazon : Water Proof Junction Electrical Box

Outdoor Waterproof Electrical Box Junction Box Weatherproof IP67 ABS Plastic Enclosure
Switch Router Project Box Electronics DIY Enclosure With Mounting Plate Wall Bracket
Grey 8.6"x6.6"x4.3"

Accessories for mounting and junction boxes

Wall clamps AS8.13 are used for attaching mounting boxes AU3.2 or AU5.2 to a 12-13 mm thick board wall. The box is pushed through the hole from behind of the

5.9 inches Camera Mount Bracket, Aluminum Indoor Outdoor Wall Mount



5.9 inches Camera Mount Bracket, Aluminum Indoor Outdoor Wall Mount Bracket L-Type Bracket for CCTV Security Dome IP Camera Mounting, Universal Outdoor Security Camera Junction Box

CCTV Camera Fixture, Waterproof Junction Box Mount for Dome

Shop CCTV Camera Fixture, Waterproof Junction Box Mount for Dome Surveillances Security Brackets. Free delivery and returns on eligible orders.

Dahua Dome Camera Wall / Ceiling Mount Plate , CCTV Security

Dahua Dome Camera Wall / Ceiling Mount Plate , CCTV Security Camera Junction Box Adapter Base , Universal Indoor/Outdoor Mounting Bracket



Can I use existing junction box screw studs alone to mount ceiling fan

I am replacing original ceiling fans in house built in 1989. The existing fan bracket was secured both with nuts on the screws coming down out of the box and with screws going up into the

Adaptable Camera Mount Adapter, Universal Security Camera Junction Box

Adaptable Camera Mount Adapter, Universal Security Camera Junction Box For Gray Surveillance Solutions, Wall Ceiling Mount Bracket Ready Description Upgrade your surveillance capabilities with

Electrical box mount , Box mounting bracket , Box



mount support

From floor-mount to wall-mount box supports, we offer a variety of options to mount just one to up to 4 or 5 boxes, and every design is rigid enough to withstand the rigors of drywall installation.

Contact Us

For datasheets, pricing, or custom optical networking solutions, please visit:
<https://www.entrenamientointeligente.es>