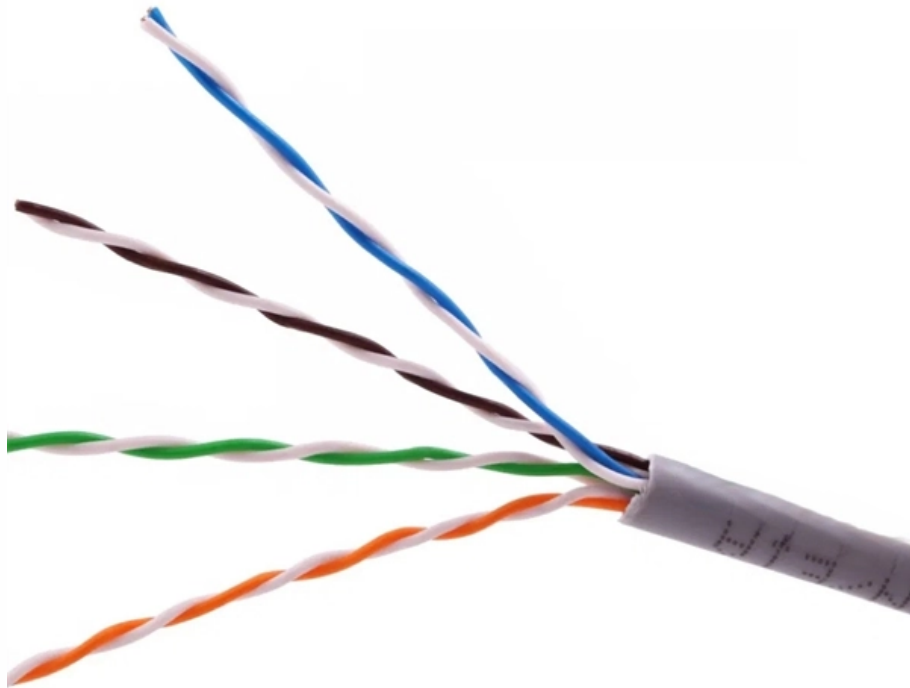


MPO jumper attenuation





Overview

For MPO jumpers, the typical insertion loss values vary depending on the type of fiber (single - mode or multi - mode) and the quality of. MTP®/MPO jumpers are pre-terminated fiber optic cables rigorously tested and designed for high-performance fiber optic connections. They use low insertion loss MTP®/MPO connectors which can reduce signal loss during transmission to support the seamless migration to higher data rates in the data. Random Mating is a method of cross-mating patch cords from different manufacturers or manufactured batches from the same supplier without the use of master patch cords or adapters. The IEC 61300-3-34, "Fiber Optic Interconnecting Devices and Passive Components - Basic Test and Measurement. The compact design of the MTP footprint and Siemon's 2mm diameter RazorCore cable achieves greater connectivity access, reduction in cable pathway congestion and improved airflow around the active equipment.



MPO jumper attenuation

Microsoft Word

Referencing a master can be compared to zeroing a load cell before weighing something. Therefore, if the master test jumper has a coating on it which causes attenuation to change, and that jumper is

OS2 MTP12 Core Jumper

12 Fiber MTP to MTP Type A OFNP OS2 9/125 μ m Single Mode Patch Cord Optical fiber jumper is to add optical fiber connectors at both ends of an optical cable to realize the active connection between



PM MPO Jumper Fiber Optic , MEISU

PM MPO patch cord is a kind of multi-core PM fiber that is fanned out and connected to MPO pm fiber connector. Normally, this kind of MPO jumper can transmit

MPO Fiber Optic Attenuator

MPO Fiber Optic Attenuator The MPO attenuators are designed to evenly attenuate optical signal power across all channels in 40/400G parallel optical transmission

MPO Jumpers Datasheet , FS

MPO Jumpers MPO jumper assemblies facilitate rapid deployment of high density backbone cabling in data centers and other high fiber environments, reducing network installation or reconfiguration time



Unraveling the Wonders of MPO Jumpers: Your Ultimate Guide

Explore MPO Jumpers: high-density connectivity, low loss, & easy installation. Ideal for data centers/comm networks. Learn selection tips, manufacturing, & future trends to boost your setup.

MPO/MTP® Fiber Optic Jumper Installation Tips: Ensuring Optimal

In this article, we will discuss key considerations when installing MPO/MTP® fiber optic jumpers to ensure optimal performance and reliable connectivity. This guide will help you understand

Ultra Low Loss MPO MTP LCAPC SCAPC Termination

Connectors with extremely low attenuation help to lower BER at the receiver and to reduce latency, thereby boosting network performance. Some people may wonder, why we need the optical jumpers

50 Meter MPO12 to MPO12 OM4 Fiber Jumper Cable

Order this 50 Meter MPO12 to MPO12 OM4 Fiber Jumper Cable from FluxLight. The MPO12 to MPO12 patch cord fiber cables are all tested for 100% functionality.

OM4 MTP12 Core Jumper

OM4 MTP12 Core Jumper The MTP fiber optic patch cord is a high-performance, multi-fiber solution designed for rapid and efficient data transmission in high-density network environments.



8 / 12 CORE MPO-MPO SINGLE-MODE CABLE DATASHEET

8 / 12 CORE MPO-MPO SINGLE-MODE CABLE DATASHEET Brief Introduction MPO loopback, also called MPO jumper looper, is to pass both ends of a section of optical fiber into an MPO connector,

What Are the Types of MPO Jumpers?

MPO jumpers are widely used in FTTX, 40/100GSFP, SFP+ and other transceiver modules or connection applications inside and outside the equipment in

MTP® Jumper, MTP®-12 UPC (Female) to MTP®-12



MTP®-12 Jumper, Female to Female, UPC, 12 Fibers, OM4, OFNP, 0.35dB, Type B MTP® jumpers are ideal for seamless data center upgrades to higher data rates,

MPO/MTP® Fiber Optic Jumper Installation Tips: Ensuring Optimal

This article provides essential tips for installing MPO/MTP® fiber optic jumpers, covering key points such as selecting the right jumper, fiber management, cleaning connectors, verifying

MPO/MTP Fiber Jumper Introduction

The MPO (Multi-fiber Push On) fiber jumper connector is one of the MT series connectors. The guide holes on the left and right sides of the ferrule end face are accurately



MPO Connector Random Mating IL versus IL by Master Jumper

The IEC 61753-1 standard specifies the random mating IL performance and provides attenuation grades depending on their performance. As multi-fiber connectors have additional design parameters and

3-Meter MPO-12 to MPO-12 Fiber Jumper Cable , FluxLight

Order this 3-meter MPO-12 to MPO-12 fiber jumper cable from FluxLight. All our fiber cables are tested for 100% functionality and guaranteed compatibility.

MTP®/MPO Jumpers Datasheet , FS

MTP®/MPO Jumpers MTP®/MPO jumpers are pre-terminated fiber optic cables rigorously



tested and designed for high-performance fiber optic connections. They use low insertion loss MTP®/MPO

MPO Jumper , MPO Fiber Patch Cable for 40G-800G , Philisun

MPO jumper for high-density fiber connectivity, supporting 40G, 100G, 400G and up to 800G networks. Available in OS2, OM3, OM4 and OM5, with low insertion loss and reliable performance for data

MTP®/MPO Jumpers Datasheet , FS

They use low insertion loss MTP®/MPO connectors which can reduce signal loss during transmission to support the seamless migration to higher data rates in the data center when used with MTP® trunk



What You Need to Know About MPO Jumpers

In the future, MPO jumpers will pay more attention to compatibility with other network equipment to achieve broader application. In summary, with their high density and high speed characteristics,

Complete Guide to MTP/MPO Fiber Optic Cable Tests

To ensure optimal performance of MTP/MPO cabling system, it's necessary to know the standards and specific test methods for MTP/MPO fiber

Link Attenuation Testing Tutorial w/ case study OptiTap Jumpers for

Referencing Jumpers for Systems with SC/UPC and OptiTap Connectors: The following



steps describe referencing jumpers for power-through testing an FTTX system consisting of an

MPO Assembly Solution - Lightera

Lightera offers an extensive line of high-density MPO multifiber connector products, including jumpers, fanouts, pigtailed and connectorized cable. When you need a

Professional Insights into MPO Jumper Parameter

Generally, multi-mode MPO fiber jumpers should have an insertion loss of less than 0.6 dB, while single-mode MPO fiber jumpers should have an

Contact Us

For datasheets, pricing, or custom optical networking solutions, please visit:



<https://www.entrenamientointeligente.es>