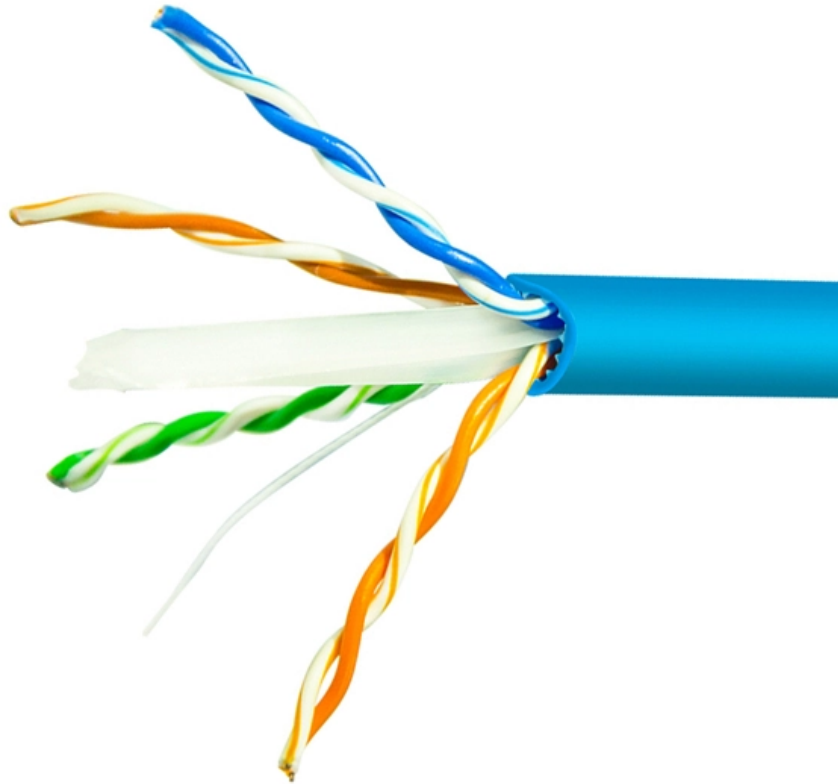


Mechanical relay protection phased out





Overview

As with all electrical equipment, protective relays have a finite life expectancy. Most relays installed in the 1990s and early 2000s have reached their end-of-life with manufacturers announcing they will no longer offer product support. As technology advances and grids become smarter, the tools used to test and maintain these systems, such as the relay test set, are evolving to meet new challenges. Electromechanical relays depend on moving parts, which can wear down or drift over time. Why ABB?

Are you looking for support or purchase information?

For new applications. However, protection relays have come a long way since American scientist Joseph Henry invented the electromagnetic relay in 1835 especially since the advent of the microprocessor based (digital) relays in the 1990s.



Mechanical relay protection phased out

What to Know About Protective Relays , EC& M

Protective relays are arguably the least understood component of medium voltage (MV) circuit protection. In fact, some believe that MV circuit breakers operate by themselves, without direct

The Lifecycle of Protective Relays: Aging and

Overtime, both older electromechanical relays and newer solid-state or microprocessor-based relays can wear down or fail in ways that are specific to



Understanding three-phase control relays for reliable

Learn why three-phase control relays are essential for protecting equipment and ensuring reliable power performance.

Motor Protection : Phase failure and reversal

Conclusion Phase failure and reversal are significant threats to motor health and operational safety. With the implementation of modern protective devices, such as phase failure

Technical Explanation for Motor Protective Relay

Protecting the motor itself (burnout protection) Minimizing damage to the load connected to the motor (In this case, you must select a Motor Protective Relay that is suitable for the load rather than the



The Useful Life of Microprocessor-Based Relays: A Data-Driven

What is the useful life of a microprocessor-based protective relay? What replacement strategy should be adopted?

Protective Relays -- Feature Past, Present, and Future a Path of

Technology and persistent engineering would eventually solve these early teething problems, and that, coupled with new economic pressures during the 1990s, opened the door for the present generation



The Current Situation and Emerging Trends in Relay

Explore the latest trends in relay protection, including innovations in relay test set technology, the shift to digital relays, and tools like the secondary

Understanding the Differences Between Protection

Protection systems are critical in today's fast-paced industrial revolution for the safety of people and processes. This article discusses electronic

Replacing Aging Relays: Challenges and Keys to Success

Most relays installed in the 1990s and early 2000s have reached their end-of-life with manufacturers announcing they will no longer offer product support. This status means the



State-of-the-art in the industrial implementation of protective relay

The paper summarizes the operating principles of relay applications, the available measurements used by relays and the protection schemes for various faults that occur frequently in

IEEE Guide for Protective Relay Applications to Power Transformers

Types of transformer failures This guide deals primarily with the application of electrical relays and over-current protective devices to detect the fault current that results from an insulation failure.



Application of Out-of-Step Blocking and Tripping Relays

Effect on Differential Relays Current differential relaying used for the protection of generators, transformers, buses and lines (such as pilot wire relays and phase comparison) will not be affected

Electromechanical relays

ABB electromechanical relays have protected the power system for more than 100 years, and with the proper inspection, maintenance, and testing techniques,

Guide To The Evolution of Protective Relays - Geatlabs

These relays were more reliable, required less maintenance, and could perform more complex protection functions. However, they still had limitations, particularly in



Upgrading electromechanical protection relays to

Modern digital relays offer significant advantages over electromechanical, solid state (static) and even first generation protection relays.

Protective relays and predictive devices , Eaton

Eaton's protective relays provide you with unique microprocessor-based devices that eliminate unnecessary trips, isolate faults, protect motors and breakers, and

Modern Relay Protection Control Applications



Utility providers were verified to have reclosing enabled with intervals as short as 200ms posing potential harm to motors out of sync with utility but still connected through bypass contactors.

Evolution of Protection Relays: From Electromechanical

Protection relays have shaped the way engineers approach relay protection and electrical safety. Over time, relay protection has advanced from

Understanding Protection Relays in Electrical Power Systems

A protection relay is a tool used to keep an eye out for anomalies or malfunctions in electrical circuits and equipment. A protection relay's main job is to identify these problems, including short circuits,



Protection Relay Retrofits & Upgrades

By taking proactive measures to complete a smooth and controlled replacement of your ageing or obsolete protection relays, we can help you increase your chances

Electromechanical Relays: Explained Simply (Uses

Unlock the world of electromechanical relays! Understand the basics, explore their applications, and discover how these handy devices control circuits.

Inside Story on Phase Failure Protection

Delta-connected motors rated higher than 10KW need additional phase-failure protection in the form of motor overload detection. Two types of overload relays used to detect phase failure are thermal bi



Phase Failure Relays: Essential Protection for Your

Discover how phase failure relays protect your industrial equipment from damage caused by phase loss or imbalance. Ensure reliability and prevent costly downtime.

Contact Us

For datasheets, pricing, or custom optical networking solutions, please visit:
<https://www.entrenamientointeligente.es>