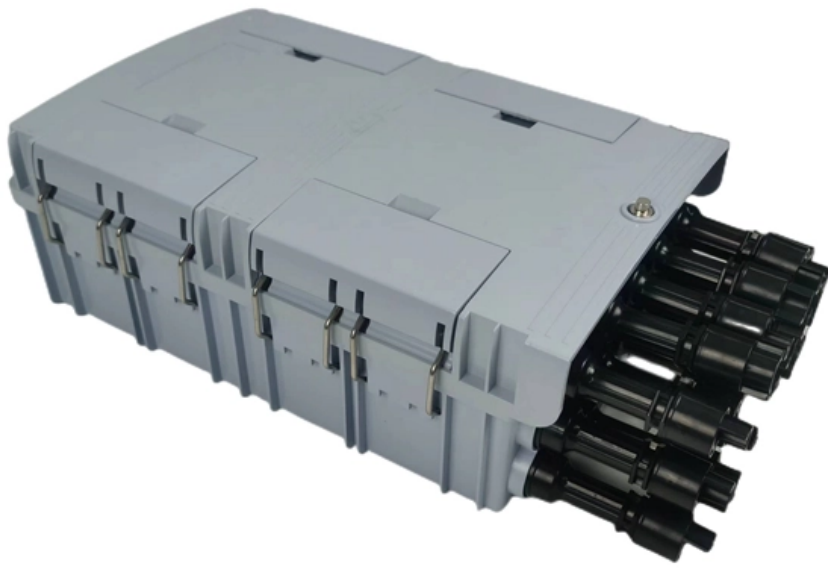


Nan Ya Electro-galvanized Cable Tray Installation





Nan Ya Electro-galvanized Cable Tray Installation

Technical Specification for Cable tray installation and cable laying work

Scope :- This specification covers the following major activities; - Fabrication and installation of Mild Steel (MS) support structure for Galvanized Iron (GI) Cable tray.

Instrument Cable Tray Installation Guide

This document provides guidance on installing instrument cables, cable trays, and conduits. It defines cable trays and explains common tray types. Standards for



CABLE TRAY SYSTEMS GUIDE

The total load supported by the cable tray, uniformly distributed. This will be the combined weight of all of the cables or tray contents, any environmental loads (snow, ice, dust) and any concentrated static

Cable Tray Installation Guidelines , PDF , Galvanization

This document provides details on installing cable trays and their support systems. It includes diagrams showing how to mount cable trays on walls using pre

How to install Cable Trays - Best Guide in 2026

Step-by-step on-site guide: learn how to plan, mark, support, and install cable trays correctly, from shop drawing approval to final checks.



Full cable tray systems specification document

B. Cable tray systems are defined to include, but are not limited to straight sections of [ladder type] [trough type] [solid bottom type] [channel type] cable trays, bends, tees, elbows, drop-outs, supports

Galvanized Cable Tray 100mm x 50mm

Galvanized cable tray with a size of 100mm x 50mm stands as a fundamental solution for efficient cable management in contemporary industrial and

A Guide to Installing and Supporting Electrical Cable Trays



This guide covers the critical steps, from selecting the right electrical cable tray and performing accurate cable fill calculations to managing a safe cable pull through

Galvanized Steel Wire Mesh Cable Tray Designed for

Installation Notice: Bends, Risers, T Junctions, Crosses & Reducers can be made from wire mesh cable tray straight sections flexibly in projects. Trays shall be

Cable Tray Installation

Whether you're building a commercial setup or upgrading an industrial plant, proper cable tray installation ensures neat wiring, safe access, and easy maintenance. But before you lay the first tray



Eurostrut Cable Trays , cable tray, cable route and

Cable Trays Clear cable routing - Organized and safe cable management, easy maintenance, helps prevent failures. Strong and durable - Made of hot-dip

Steel cable tray

Steel Cable tray wire mesh is a type of support system used for managing and organizing electrical cables and wires. It provides a safe and efficient way to route

Ultimate Guide to Cable Tray Galvanized: Benefits, Installation Tips

By following the installation tips and understanding the benefits of cable tray galvanized, you can ensure a successful cable management system for your facility. If you have any further



Method Statement installation of Cable Trays and Ladders

The Cable Tray system is installed in electrical rooms, plant rooms, and service corridors. This section will guide you through the necessary steps to

Metal Cable Tray Installation Guidelines , Cable Tray Institute

The Cable Tray Institute is making available the current edition of this practical guide for the proper installation of aluminum or steel cable tray systems. These guidelines will be useful to engineers,



Technical Guidelines for Cable Tray Installation and

Cable tray installation must comply with specific technical standards to ensure electrical safety, system reliability, and long-term maintainability. This document

Cable Tray Technical Guide A practical guide to product selection and

Cable tray is considered to be a system. It must provide continuous support for cables, and the electrical continuity of the cable tray system must be maintained.

Method Statement installation of Cable Trays and Ladders

This method statement covers the site installation of the cable tray & ladders and the requirements of checks to be carried out.



HDG Cable Tray VS Galv Cable Tray: A Comprehensive

Discover the key differences between HDG cable tray VS Galv cable tray. Learn about their structure, corrosion resistance, cost in this comprehensive

Galvanized Cable Tray Zinc Coating Standards and

Comprehensive guide to galvanized cable tray zinc coatings. Know HDG vs electro-galvanizing standards (GB/T 13912, GB/T 26941), thickness

Proper Galvanization In Cable Tray Manufacturing and



The Galvanization of Cable Tray has to undergo a thorough process, which includes a proper treatment of cable trays.

SS316 SS304 Electro Galvanized Cable Bracket Tray

Flexible pathway-Tray can be cut and formed into turns and transitions using standard splices, simplifying design and components selection. Fast installation-A

Ultimate Guide to Cable Tray Selection - Types,

Learn how to choose the best cable tray system for your needs. Explore types, materials, installation tips, and NEC compliance in this expert guide.



CABLE TRAYS GENERAL INFORMATION AND

General information of Kiraç Metal Cable Trays and installation guide are arranged in accordance with IEC 61537 standards and this document has been prepared for

Cable Tray Installation Procedure Guide

The document outlines the procedure for installing cable trays, including essential tools, equipment, and safety measures. It emphasizes the importance of thorough

Best Practice Guide to Cable Ladder and Cable Tray Systems

This publication is intended as a practical guide for the proper and safe* installation of cable ladder systems, cable tray systems, channel support systems and associated supports.



Contact Us

For datasheets, pricing, or custom optical networking solutions, please visit:
<https://www.entrenamientointeligente.es>