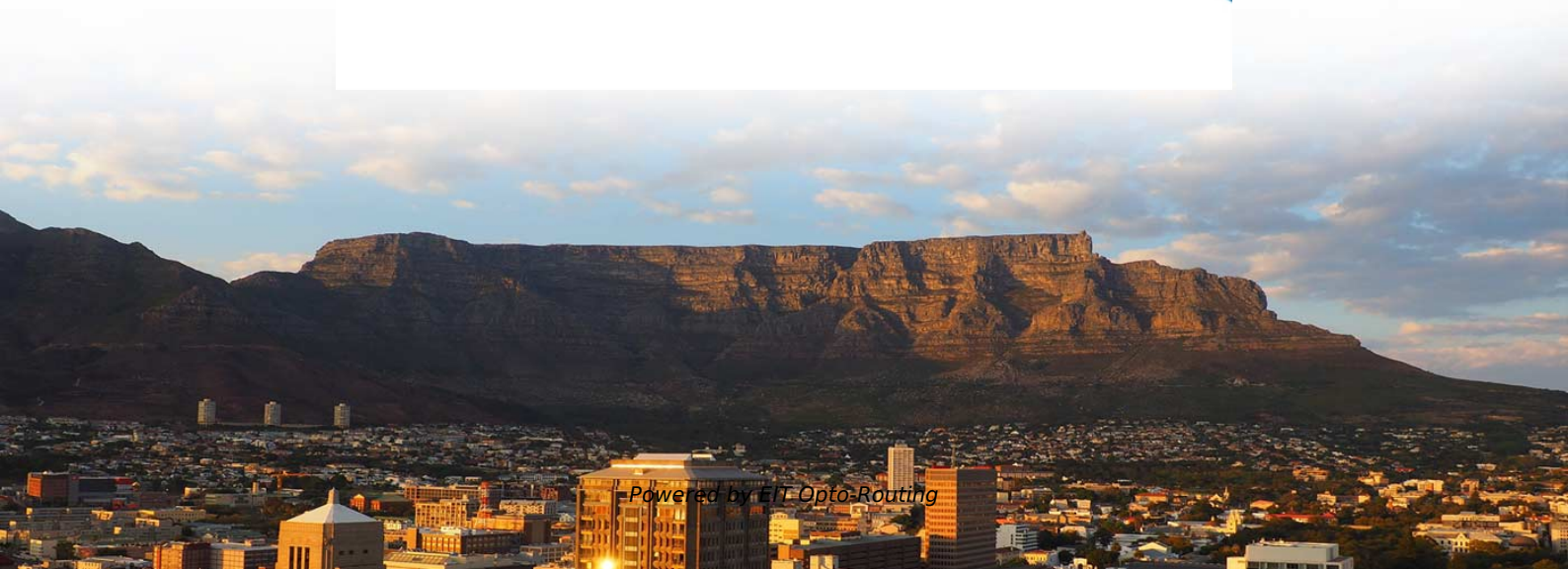
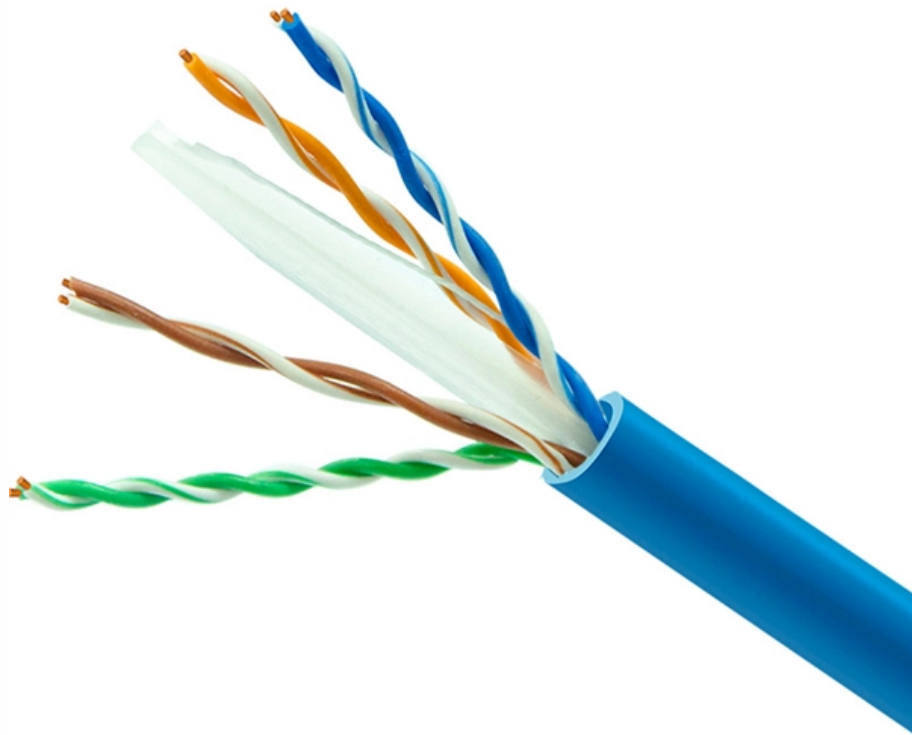


Netherlands door-to-door shipping single-fiber bidirectional 100G





Netherlands door-to-door shipping single-fiber bidirectional 100G

100G Over Single Fiber, Simplified , ProLabs

Delivers 100G over a single fiber up to 70km, avoiding costly construction or leasing. Ideal for network operators looking to scale quickly

The Ins and Outs of Bidirectional Fiber (BiDi) for 100G

These deployments save network resources, cut infrastructure costs, and allow you to maximize the cabling you already have in the walls. This guide explains how bidirectional



Experimental demonstration of 100 Gb/s single-fiber bidirectional

Abstract We experimentally demonstrate 100 Gb/s bidirectional transmission over 40 km using a multi-wavelength bidirectional optical sub-assembly (BOSA) based on a single bidirectional multi

100G QSFP28 BiDi : Optical Transceiver Module , NEC

NEC's 100G QSFP28 BiDi optical transceiver enables the transmission and reception of 100Gb/s high-speed data over a single optical fiber. By enabling bidirectional

10G BiDi SFP+ 10km , Tx1270/Rx1330 , Single Fiber

Compatible 10G BiDi SFP+ for 10km single fiber. Tx1270/Rx1330nm, 6.2dB budget, 50% fiber savings. Works with 80+ brands.



Experimental demonstration of 100 Gb/s single-fiber

The multi-wavelength BOSA enables the bidirectional transmission of 2×50 Gb/s PAM4 signals over a 40-km single-fiber link. The multi-wavelength

Fundamentals of Bidirectional Transmission over a

Bidirectional transmission over optical fibre networks may yield a large cost reduction because of the reduction of the network infrastructure by a factor two and the

The Complete Guide to BiDi Transceiver



What Is BiDi Transceiver? BiDi transceivers have become synonymous with reliable and high-performance networking, which can achieve

Redefine Fiber Efficiency with FS Single-fiber DWDM Solution

Discover FS's single-fiber DWDM solution with amplification. Maximize fiber resources, reduce fiber costs, simplify deployment and support long-haul transmission over a single core.

BiDi Single-Fiber Bidirectional Optical Module Details

The interface of optical module is mainly divided into single-fiber bidirectional BiDi, dual-fiber bidirectional (Deplx) and other types. In WDM system, the line transmission method mainly



Opticonnect Systems

Opticonnects offers a range of passive WDM devices for both Dual Fiber as Single Fiber Bidirectional connections, using Wave Division Multiplexing technology.

Single Fiber (BiDi)

TerolinesinglefiberbidirectionalQSFP28modulefor100Gapplicationoversinglemode optical fiber. The module can be used with any network device that accepts standard MSA transceivers - e.g. D

2025 SFP vs. BiDi SFP: Key Differences and Applications in Networking



They are available for both single-mode and multimode fibers and can support various data rates (e.g., 1G, 10G, 25G, 100G). The BiDi SFP Transceiver The BiDi SFP (Bidirectional SFP) is

Bidirectional Fiber

Bidirectional Fiber refers to a type of optical fiber communication technology that enables data transmission in both directions on a single fiber strand. This contrasts with traditional fiber

100G BIDI QSFP28 Optical Transceivers for Long-Reach Networks

Our line of 100G single-fiber transceivers for 10-80 km offers certified compatibility, low power consumption, and expert support. Contact Aerech Networks now to discuss your network



Single Fiber vs Dual Fiber Transceivers Understanding

Single fiber transceivers, like the Bidi Transceiver, use one fiber for bidirectional data, while dual fiber transceivers require two fibers for separate TX

Comprehensive Guide to SFP BiDi 10G 40km Modules: Selection

Discover Link-PP's reliable and compatible SFP BiDi 10G 40km modules for high-speed, cost-effective single-fiber 10G networks. Learn about selection tips, wavelength pairing, installation

QSFP-100G-SR1.2 vs. QSFP28-BIDI-100G: Choosing



Explore the key differences between the QSFP-100G-SR1.2 and QSFP28-BIDI-100G. Learn how to select the best module based on fiber

QSFP28 100G SR1.2 bidirectional transceivers optimize

In data centers & tech enterprises around the world, the demand for larger capacity, competitive advantages, and high-performance are constantly increasing. Service

1G Bidirectional Transceivers for Service Provider and

The Cisco 1G bidirectional transceivers provide several benefits for both service provider and IoT applications. These transceivers offer the following



To BiDi or Not To BiDi: The Pros and Cons of 25G and

A 25G Bi-Directional, or BiDi, uses one port with two optical signals of different wavelengths to transmit and receive signals over a single strand fiber.

100G Era Is Coming:How Will BIDI Transceivers Lead

In this context, BIDI transceivers, as a cutting-edge technology, are widely considered to be the future trend in the 100G era.

Explaining 100G Bidirectional (BiDi) Optics

This 100G bidirectional transceiver provides 100Gbs bandwidth over standard duplex



multi-mode fiber. The 100G multi-mode BiDi QSFP28 optics

100G Over Single Fiber, Simplified , ProLabs

Upgrading from 10G to 100G no longer requires complex fiber builds. Our QSFP28 Bidirectional (BiDi) transceivers delivers high-speed 100G

40G vs. 100G BiDi Transceivers, What is The Difference

This article introduces you to the difference between 40GBASE BiDi and 100GBASE BiDi transceivers, and learns how to choose between QSFP+ 40G SR BiDi and



100G QSFP28 SR BiDi 100m LC Optical Transceiver

Leverages BiDi (Bidirectional) technology to transmit and receive over a single fiber strand. Ideal for space-constrained data centers, enterprise networks, and 5G

10G BiDi SFP+ Modules: A Guide to Single-Fiber 10G

Explore how 10G BiDi SFP+ modules enable high-speed, bidirectional data over a single fiber, cutting costs, saving fiber, and simplifying network deployment.

Contact Us

For datasheets, pricing, or custom optical networking solutions, please visit:
<https://www.entrenamientointeligente.es>