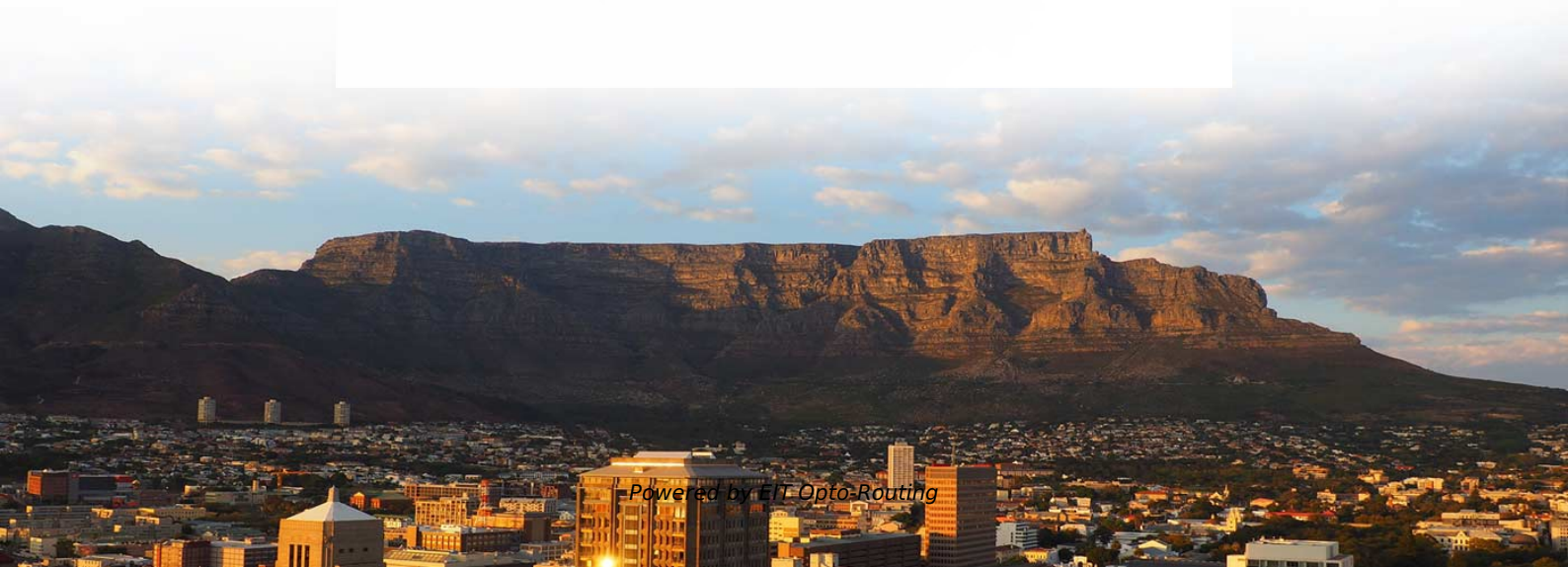
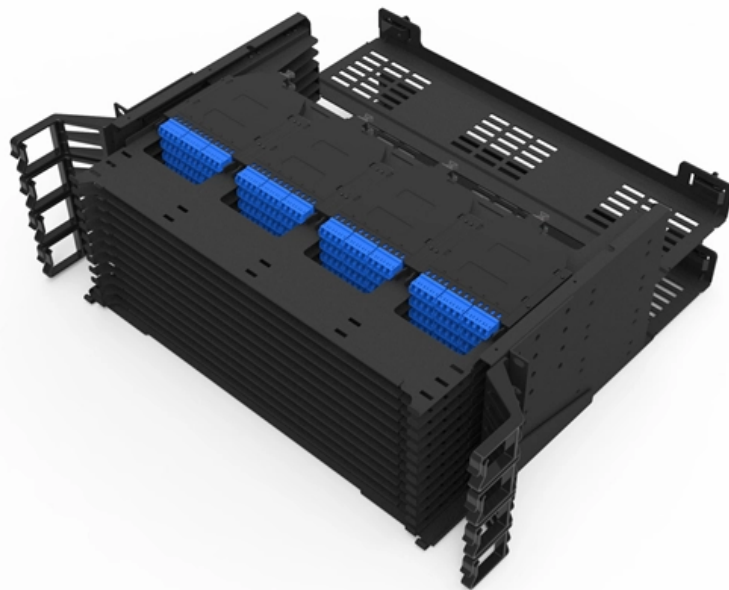


New Zealand Data Center Four-Port Information Panel Installation Case





New Zealand Data Center Four-Port Information Panel Installation C

NEW ZEALAND ELECTRICAL CODE OF PRACTICE

Pursuant to section 38 of the Electricity Act 1992, I hereby approve the New Zealand Electrical Code of Practice for Homeowner/Occupier's Electrical Wiring Work in Domestic Installations 2004 (NZECP)

Support Home , Dell US

Get support for your Dell product with free diagnostic tests, drivers, downloads, how-to articles, videos, FAQs and community forums. Or speak with a Dell technical expert by phone or chat.



Data Sheet Fujitsu PRIMERGY RX4770 M4 Server

PRIMERGYRX4770M4TheFUJITSUServerPRIMERGYRX4770M4isanindustry-standard x86 server system with four sockets, providing superior levels of performance, scalability

R& M Data Center Handbook

R& M Data Center Handbook designing data centers. Many data centers around the world rely on our fiber-optic and twisted-pair cabling solutions as the physical foun

IGN_Colocation_Mahwah_Technical_Specs_4.5 draft

IGNOpticprovidesconnectivityfromthecustomerColocationHallstoresourcesoutside the Data Center, and the Wireless and Low Latency Network services allow for low latency connectivity



Coldstore Engineering in New Zealand

The Institution of Professional Engineers New Zealand acknowledges and thanks the following partners who played major roles in the development of this Practice Note and support its wide dissemination

HP Procurve Switch 408 Installation Guide

Features The features of the Switch 408 include: 8 auto-sensing 10/100Base-TX RJ-45 ports--all ports can sense the connection speed, 10 Mbps or 100 Mbps, and automatically operate at that speed HP

Unistrut Construction



Our integrated approach to data center design, fabrication, and installation allows us to offer the highest quality Unistrut HAC, at the lowest cost. Most of our customers are repeat customers or referrals due

Aruba 4100i Switch Series Installation and Getting Started Guide

Install rack rail assemblies to the four-post rack, see the Aruba Version B Switch Rail Kit installation for Aruba Switches guide for your four-post rack (JL9583B).

Data Sheet Fujitsu PRIMERGY RX1330 M4 Server

More information Learn more about Fujitsu PRIMERGY RX1330 M4, please contact your Fujitsu sales representative or Fujitsu Business partner, or visit our website.



Server / Network Racks & Cabinets

DynamixRSR18-6X718RUServerCabinet700mmDeep(600x700x988mm).Includes1x Fixed Shelf, 4x Fans, 25x Cage Nuts & 4x Level Feet. 800kg static

Data Center Design and Construction: A Complete Guide

Learn how to design and build a data center with this 8-step guide. Explore key components, best practices & requirements for a secure, scalable facility.

Data ICT Products

A range suitable for both fibre and copper lines, and surface or flush mounted, these enclosures are supplied complete with a double GPO and 8 port RJ45 Cat5 patch unit.



Patch Panel, Actassi, Flex Cat6 UTP 24-Port

This 19 inch rack is provided with 24 S-110 Punch down RJ45 Cat6 unshielded in 1U height. RJ45 are provided unloaded to be able to use the quick fix tool to save

Advanced Data Centre Solutions for Secure Colocation

Our scalable colocation data centre services can be configured to your needs with quarter-, half-, and multi-rack options. We can even deliver you a customised

Data Sheet PRIMERGY RX2530 M7 Rack Server



PRIMERGY RX2530 M7 The PRIMERGY RX2530 M7 server in a dense 1U chassis is based on a dual-socket x86 platform providing an ideal combination of performance and scalability for most data

Cisco Nexus 9804 NX-OS Mode Switch Hardware Installation Guide

Protect the transceiver ports by inserting clean dust caps (NXA-ACC-QDD-DC) into any ports not in use. Be sure to clean the optic surfaces of the fiber cables before you plug them back into the optical

Quick guide to data centre design phases and disciplines

Designing a data centre is a multidisciplinary and complex task. It combines different types of expertise, like structural, mechanical and electrical engineering for each



Simeon 4-Port DIN Mount PP

DIN Rail Mounted Patch Panels provide an effective solution for industrial networks inside control panels and distribution cabinets where DIN mounted equipment is used. The modular design

UACC-Rack-Panel-Patch-Blank-24 Ubiquiti Rack Mount

New model with cable management bar The Ubiquiti 24-Port Unloaded Keystone Patch Panel is a standalone insert that can be easily installed into an existing

Electrical Distribution Equipment in Data Center Environments



Electrical distribution equipment is the backbone of the data center as it provides the power path to all of the equipment in the data center, such as IT devices, cooling units, security, and lighting.

DATAMASTER® P4604WHI Four Gang Wall Switch Plate - White

The DATAMASTER® 2000 Series Four Gang Wall Switch Plate (P4604WHI) is a high-capacity solution tailored for modern data and communication installations across Australia and New Zealand.

Contact Us

For datasheets, pricing, or custom optical networking solutions, please visit:
<https://www.entrenamientointeligente.es>