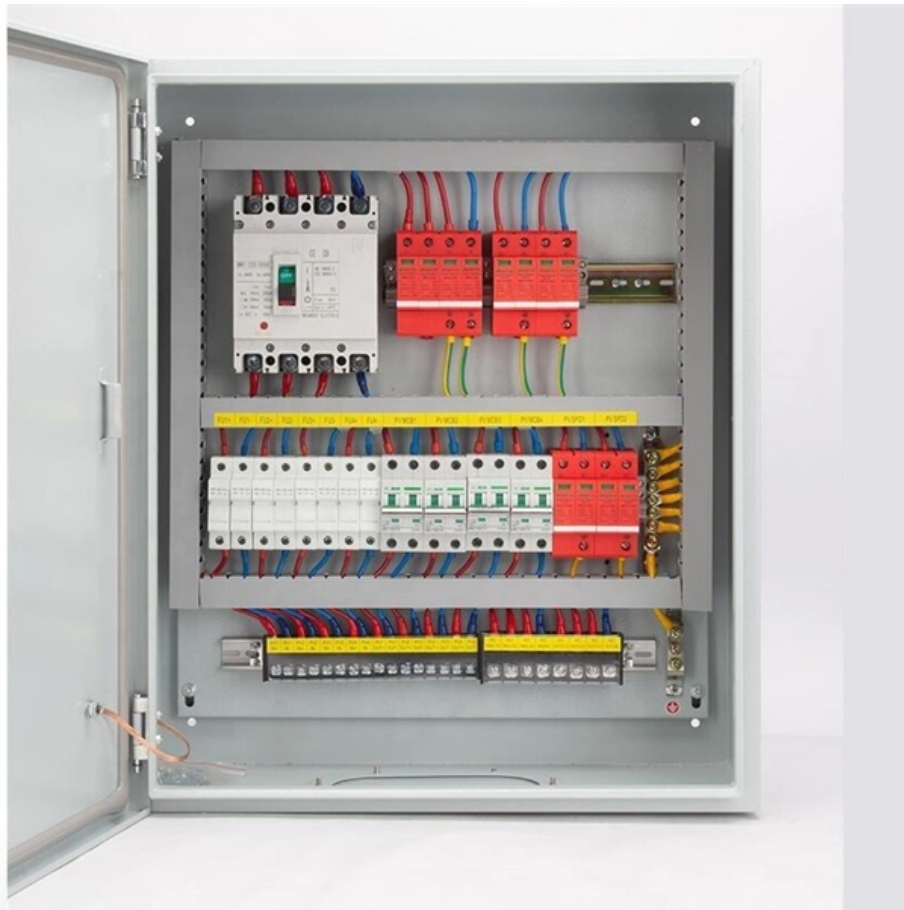


On which floor should the residential electrical distribution box be installed





Overview

In industrial settings, you may need to adjust the height depending on the space and.



On which floor should the residential electrical distribution box be i

Requirements And Specifications For Installation Of

The bottom edge of the distribution box is usually between 1.5 meters and 1.8 meters above the ground, which is convenient for operation and

How to confirm whether the installation location of the

The electrical distribution box plays a vital role in the power system. It is responsible for distributing electricity to various circuits and equipment.



Distribution Box Installation: A Complete Guide to Safe

In this comprehensive guide, we'll cover everything you need to know about distribution box installation, from the basics to the step-by-step installation

Distribution Box Installation: A Complete Guide to Safe

The distribution box, often referred to as a breaker box, fuse box, or electrical panel, is a critical component of any electrical system. It acts as the central hub for

What should the distance be between the floor and the

Answered by Farrah, Electrical Safety Expert Approved Document M of the Building Regulations states that consumer units/fuseboxes should be mounted so that the



Are There Restrictions On Where To Mount A

The National Fire Protection Association publishes the National Electric Code, or NEC, which is adopted by nearly every building code jurisdiction

The Complete Guide to Distribution Box: Installation, Types & More

Blog The Complete Guide to Distribution Box: Installation, Types & More By Admin Aug 2, 2025 No Comments # distribution box Introduction Electrical systems power our homes, offices, and

Distribution of Electricity in Multi-Storey Building



The distribution fuse board is generally installed on the lowest floor, so that quick access to it may be possible in the case of an accident. Then,

Key Points Of Installation And Collocation Of Distribution Box In

Distribution box and switch box shall be made of iron plate or high-quality insulating material, and the thickness of iron plate shall be greater than 1.5mm The electrical equipment in the distribution box

Understanding Distribution Boxes: A Comprehensive Guide

A distribution box, also known as a power distribution box or electrical distribution box, is used to distribute electrical power safely to multiple



What Is the Required Electrical Panel Height From Floor?

For the vertical clearance, often called headroom, the space must be clear from the floor up to a minimum height of 6 feet 7 inches (2.0 meters) or the height of the equipment, whichever is

How to confirm whether the installation location of the

The box should be installed in a dry and well-ventilated place to avoid aging of insulation materials or electrical short circuits that may be caused by

How to Install a Distribution Box--A Comprehensive



The best height for installing residential distribution boxes is 1.5 meters above the ground, while for industrial distribution boxes, the height

electrical

How far off the floor should my circuit breaker box be? I'm changing from a 100 to a 200 amp. The lead in wires are underground and come into the bottom of box making them too short to

How to Choose a House Distribution Box , CHINT global

A well-chosen distribution box ensures the safety and efficiency of your household electrical system. This article guides you through selecting a



The Complete Guide to Distribution Box: Installation, Types & More

Proper installation of a distribution box requires careful planning and adherence to electrical codes. While major installations should always involve qualified electricians, understanding

What is the code minimum height for an electrical panel?

But there is a maximum height allowed for an electrical panel, which is based on the height of the highest breaker switch in the panel. It's set at 6'-7" above the floor, with an exception

Distribution Boards



Distribution boards, often referred to as electrical panels or breaker boxes, serve as the nerve center of any electrical system. Here we explore the crucial parts of a distribution board and gain insights into

How to Install a Floor Outlet (DIY) , Family Handyman

Say goodbye to hazardous extension cords by installing a floor outlet by yourself. Follow this expert-approved step-by-step guide.

Installation points of household distribution box

The distribution box of household distribution box should not be installed too high. Generally, the installation elevation is 1.8m to facilitate operation; the electric pipe



How to Install a Distribution Box--A Comprehensive

Whether you are an electrical contractor or a construction brigade, knowing how to properly and safely install distribution boxes is the basis of

IEC / BS 7671 Codes for Consumer Unit and Distribution

Residential: The recommended height for distribution board and consumer unit is between 1 metre to 1.8 metre from the floor. The suggested height is 1.3 metres

Where is the best place to put a power distribution box?



The location needs to be easily accessible and free from any obstructions that could make installation difficult or time-consuming. In addition, the location should be close to the main electrical power

How High Should I Hang my Electrical Panel?

Pro Electrician Tricks That Aren't in the How-To Videos How To Wire A Sub Panel - VERY DETAILED INSTALLATION! Start To Finish Sub Panels Explained - Why are neutral and ground separated?

Contact Us

For datasheets, pricing, or custom optical networking solutions, please visit:
<https://www.entrenamientointeligente.es>