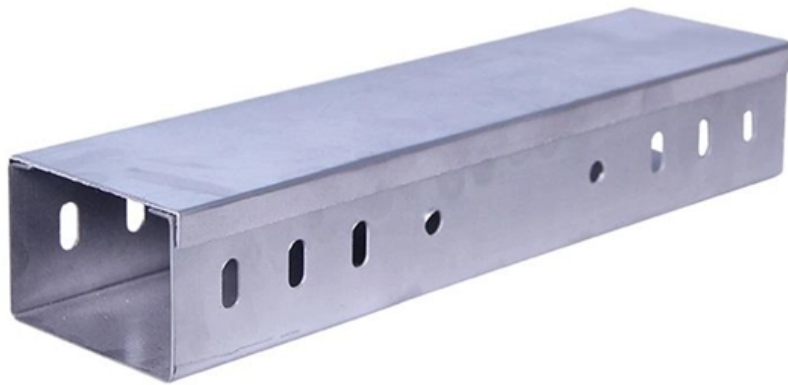


# **Optical Module SFP-25G**





## Optical Module SFP-25G

---

# 100m 1000m 25g 10g 40g Sfp Fiber Optic Module Technical Specifici

---

100m 1000m 25g 10g 40g Sfp Fiber Optic Module Technical Specifici searchable photo catalog of B2B products. - Page 22

## CUDY SM100GSA-40 1.25G SFP Single-Mode Optical Module

---

SFP transceiver that supports 1G connections up to 40 km using single-mode fiber with a duplex LC connector. Max 1.25 Gbps Speed Duplex LC Connector Compatible with SFP Slots 40 km Fiber



## **SFP+ vs SFP28: What Is the Difference Between 10G and 25G Optics?**

---

As network traffic continues to grow, many organisations are looking beyond traditional 10G connectivity and considering whether 25G is the right next step. That often leads to one of the most

## **SFP Module 10G SFP Optical Transceiver GPON PON Fiber Copper**

---

Key attributes Type SFP Module Use FTTX Network Wireless Lan, 5G, Bluetooth, Wired LAN Model Number SFP 1.25G Brand Name Unionfiber Place of Origin Guangdong, China Warranty Time 3

## **25G SFP28 Optical Transceiver Modules**

---



FS25G SFP28 transceiver solutions offer a wide variety of high-density and low-power 25 Gigabit Ethernet connectivity options for data centre and high-performance computing networks applications.

## **MSA-Compliant SFP-25G-LR-S SFP28 Module, 25Gbps**

---

Enhance the networking infrastructure with this MSA-compatible 25GBASE-LR optical transceiver, ensuring reliable performance and seamless connectivity at

## **Wholesale Optical Transceivers Module , 100G**

---

Shop high-speed optical transceivers from Unitekfiber. We offer 100% compatible 40G, 100G, and 400G QSFP-DD modules for data centers. Expert technical



## Cisco 25GBASE SFP28 Modules Data Sheet

---

The Cisco® 25GBASE SFP28 (Small Form-Factor Pluggable) portfolio offers customers a wide variety of high-density and low-power 25 Gigabit Ethernet connectivity options for data center and high

## Differences Between Optical Modules SFP, SFP+, CFP, XFP, QSFP

---

At present, 40G optical module and 100G optical module price is too high, power consumption is too large, and 10G optical module rate can not meet the network demand, so 25G

## 1.25G SFP BIDI OPTICAL TRANSCEIVER MODULE

---

1.25G SFP BIDI Tx1550/Rx1490nm 120KM SMF DDM LC CISCO JUNIPER HUAWEI



COMPATIBLE SFP OPTICAL TRANSCEIVER MODULE The SFP-BIDI transceivers are high performance, cost

## **100m 1000m 25g 10g 40g Sfp Fiber Optic Module Technical Specifi**

---

100m 1000m 25g 10g 40g Sfp Fiber Optic Module Technical Specifi searchable photo catalog of B2B products. - Page 25

## **25G Optics , HPE Juniper Networking US**

---

All Juniper 25G optics are compliant with key industry standards and specifications for seamless interoperability in multivendor environments and qualified for use



## **Transceiver Optical Module Cisco 1.25G SFP 1430nm CWDM**

---

CWDM 1.25G SFP optical transceiver is a versatile network component. Operating within the 1270-1610nm wavelength range, the single fiber SFP CWDM transceiver module supports data rates of

## **10Gtek 1.25G SFP Transceiver 1000Base-LX, 1310nm SMF**

---

1000BASE-LX/LH SFP to LC Optical Gigabit Ethernet Fiber transceiver module, 1.25G Singlemode MiniGBIC SFP (supports OS1/OS2/OS3 fiber cables), Duplex LC connector, 1310nm, DDM, up to 13km. [Wide Compatibility] Compatible with Cisco GLC-LH-SMD, Meraki MA-SFP-1GB-LX10, Ubiquiti UniFi, Fortinet,

## **Connection Schemes for Optical Module and Fiber Patch Cord**

---



1.25G SFP SX optical module operates at a wavelength of 850nm, using LC duplex interfaces, and pairs with multimode duplex fiber patch cords OM1/OM2 for distances up to 550m.

## **The Ultimate Guide to SFP Modules (2026): Types,**

---

Confused by SFP vs SFP+? Read the definitive 2026 guide on SFP modules. We explain Single Mode vs Multimode, DDM diagnostics, and how to choose the right

## **Syrotech GPON OLT C+++ Optical Module 2.5G/1.25G**

---

GPON SFP, C+++ , 1490/1310, 20KM Syrotech Optical Transceiver GPON SFPC+++ 2.5G Bidi 20 Kms is a high-performance optical transceiver module that is used to



## **StarTech SFP-25G-LR-S-M-ST MSA-Compliant SFP-25G-LR-S**

---

Overview Msa-compliant Fiber Optic Transceiver With 25gbps Connectivity Up To 10km (6.2mi) Over Lc-terminated Single Mode Fiber (smf) Cable. The Optical Module Has Been Programmed And

## **SFP+ Optical Transceiver Modules (10G-SR/LR)**

---

Amphenol SFP Optical Modules o SFP+ Optical Modules from Cables on Demand are Now Available in both Short Range (SR) Multimode and Long Range (LR)

## **Optical Transceiver: SFP vs SFP+ vs QSFP28 vs QSFP-DD**

---

This article provides a comprehensive comparison of mainstream optical transceivers,



including SFP, SFP+, QSFP+, QSFP28, and QSFP-DD. It explains their technical differences,

## **Haile SFP-GE40-SM1310-A 1.25G Gigabit Single Fiber Optical Module**

---

**Product Overview** The Haile SFP-GE40-SM1310-A is a high-performance Gigabit single-mode single fiber optical module designed for reliable long-distance data transmission. Operating at 1.25Gbps,

### **Contact Us**

---

For datasheets, pricing, or custom optical networking solutions, please visit:  
<https://www.entrenamientointeligente.es>