

Outdoor cable trays are laid underground in cable trenches

OEM/ODM
CUSTOMIZATION AVAILABLE



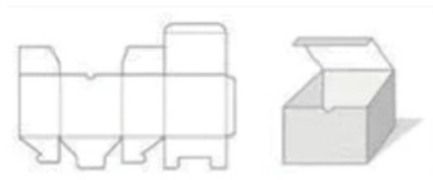
Full product customization



Structure customization



Brand customization



Packaging design





Overview

The biggest difference is how they're installed—trays are exposed, trenches are buried. Underground cables are widely used in modern cities, industries, and infrastructure projects. At Cableworld, we supply high-quality cables designed for underground use, making us your go-to source for reliable solutions that meet UK standards.



Outdoor cable trays are laid underground in cable trenches

Underground Cable Laying Methods

This document provides guidance on cable laying and pulling. It discusses various cable laying arrangements including direct burial, cable trays, ducts, and

IS 12459 (1988): Code of Practice for Fire Safety in Cable Runs

0.2 All major industries (including high rise buildings) use electrical cables extensively. The cables are mostly run through underground cable tunnels, trenches, overhead cable trays and ducts. Modern



Substation LV Cables, Conduits, Trenches and Pits

Purpose and Scope This document states the functional requirements with regard to substation LV cables and integration of substation LV cables into a substation. The document addresses the

Benefits of Cable Trench and Cable Tray Solutions

Unlike a cable trench, which is installed underground, a cable tray and cable trench system is used above ground, offering a flexible, visible solution to manage cables.

BN-DS-E03 Electrical Design Direct Burial of Cables

Diagonal area crossing are not allowed. 1.1.2 Cables shall not run both underneath and parallel with pipelines laid in or directly on the ground. Where cables run



Microsoft Word

Cables in conduit embedded in masonry, 7 brickwork, concrete, plaster or the like (other than thermally insulating materials). In trunking: 8 Cables in trunking on a wall or suspended in the air. 9 Cables in

Annex I

When cable trays have to connect two buildings and have to go through accessible trenches, the minimum size of the trenches must allow human access along the cable trays placed in these

Cable Tray Systems: Requirements and Best Practices



Comprehensive guide to cable tray systems requirements: tray types, materials, loading, supports, bonding, routing, and best practices for safe electrical cable management.

Underground Cable Laying All You Need to Know

What is underground cable laying? In areas where space for cables is limited and crunched, especially the urban regions, underground laying of

Underground Cable Laying Methods

Underground cable installation in trenches is described as the common method, providing advantages over overhead lines. Factors like depth, warning tape, and



Difference Between Cable Tray and Cable Trench , Hutaib Electrical

Explore the differences between cable trays and cable trenches for effective cable management. Learn about their design, applications, advantages, and limitations, and how Hutaib

IEEE 525-2007_accepted

The substation fiber-optic cable raceway may be cable tray, conduit, underground duct, or a trench system. However, conduit and duct offers protection from crushing, ground disruption, rodents, and

Direct Buried Cable Installation Trench Requirements

Laying cable in a prepared trench One method for installing direct-buried cables is to lay



them in a prepared trench from a moving vehicle which carries the reel of

CABLE LAYING AND PULLING

Direct in the ground in trenches (underground cables). In cable trenches in outdoors switchyards. In cable trays or cable ducts Fixed with clamps

Laying of Underground Cables.pptx

Underground cables are used to transmit power over long distances. They are laid in trenches below ground for safety and aesthetic reasons. Some key advantages of

Underground Cable Laying Methods , PDF , Switch



LT and HT underground cables can be laid in three methods. The first method uses brick wall trenches with cover plates to place cables at the bottom. The second

IEC Standard for Underground Cable Laying - Complete

The main goal of the IEC standard for underground cable laying is to ensure cables are installed properly without mechanical damage, overheating, or

UNDERGROUND CABLE INSTALLATION IN GROUND

The arrangement and method of cable laying both in ground duct and cable tray is an important factor to current carrying capacity and working performance of cable in



Benefits of Cable Trench and Cable Tray Solutions

Learn the differences between cable trench and cable tray systems. This guide compares their structure, installation, and suitability for various setups.

Understanding Cable Pathways, Cable Conduits, Cable

A cable pathway or raceway is a protective channel or enclosure made of materials like metal or plastic, used to manage and safeguard electrical cables and wires. It

What Is the Difference Between Cable Tray and Cable Trench?

The biggest difference is how they're installed--trays are exposed, trenches are buried.



Let's break down how each system works, where to use them, and what to consider before choosing

CABLE LAYING AND PULLING

Direct in the ground in trenches (underground cables). In cable trenches in outdoors switchyards. In cable trays or cable ducts Fixed with clamps (usually at walls and ceilings).

Buried Cables: What are the Regulations?

Learn about buried cable regulations, including the required burial depths in different locations and protective safety measures for underground cable.



Installation of Cables

Underground cables are, of course, meant to be installed or laid under the ground. The reliability of underground cable network highly depends upon proper laying of cables, quality of cable joints,

IS 1255 (1983): Code of practice for installation and maintenance of

10.4.1 The motor driven rollers enable power cables of any desired length to be laid in open trenches or passable cable trench. They are not recommended for unarmoured cables.

Can Tray Cables Be Buried Underground?

This article explains when and how tray cables can be buried underground, the necessary ratings and standards, installation best practices and essential compliance considerations.



Understanding Cable Pathways, Cable Conduits, Cable

There are various types, including surface-mounted, flush-mounted, and underground pathways, each suited to different installation needs. In this blog

MV Cables

Cables laid in trenches shall have a covering of dry sand of not less than 200cm above the base cushion of sand before the protective cover is laid. Extra loop cable

Contact Us

For datasheets, pricing, or custom optical networking solutions, please visit:
<https://www.entrenamientointeligente.es>