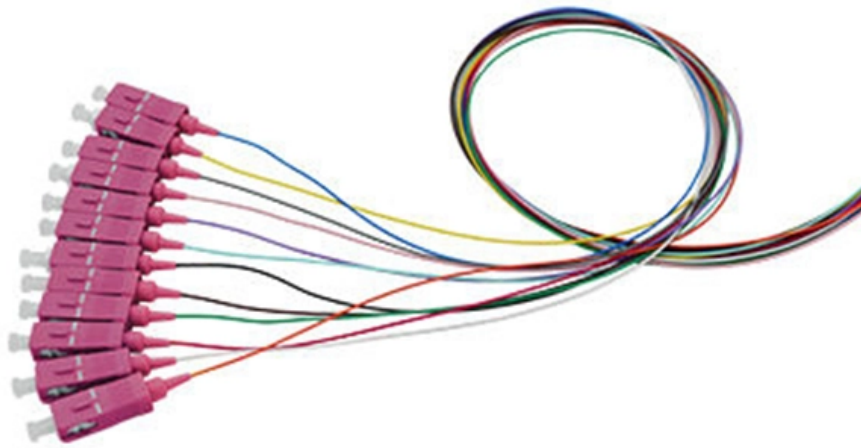


PE wiring in distribution box





PE wiring in distribution box

How to Install a Distribution Box--A Comprehensive

What is a Distribution Box? First of all, you need to have a simple understanding of the definition of a distribution box, and make it clear which kind

Distributor's Box Wiring: Bridging PE with N or Creating

The discussion revolves around the proper grounding methods for a construction distributor's box that provides three-phase power and neutral but



Distribution Box Wiring Steps

?Wiring and Binding? ?Wiring Direction?: Wiring between the main circuit breaker and each branch circuit breaker in the box generally goes on the left, and

Technical Requirements for Distribution Box in Electrical Industry

Different industries, different products have different technical requirements, in the electrical industry, distribution boxes, distribution boxes are no exception, distribution boxes, distribution boxes are also

JXF Power Distribution Box (Cabinet) User Manual

Open-mounted distribution box installation method: Assemble four bolts into the four holes on the corners and tighten them into the expansion pipes to fix the box.



Browse Hard Wired Distribution Boxes , TE Connectivity

TE Connectivity's (TE) hard-wired power distribution boxes and systems help provide the next evolution of reliable and optimized power network structure. The increasing number of functions in vehicles

Explain in detail the connection method of the three-phase five-wire

The three-phase five-wire system standard wire colors are: A wire is yellow, B wire is green, C wire is red, N wire is light blue, and PE wire is yellow-green.

The installation requirements for the distribution



box

Learn how to install a distribution box safely and correctly. Covers wiring, placement, standards, and expert tips for a compliant setup.

Wiring of the Distribution Board From Energy Meter to

How to Wire a Distribution Board? Distribution Board also known as "Panel Board", "Switch & Fuse Board" or "Consumer Unit" is a box installed in the building

Connection and choice for protective earthing conductor

Protective Earthing (PE) conductors provide the bonding connection between all exposed and extraneous conductive parts of an installation, to create the main equipotential bonding



How to determine the size, installation method and

(1) Wiring method of distribution box 1) Generally, the incoming line of power distribution box adopts five wire system, that is, a, B and C three-way phase line

Understanding the Differences Between Protective

Electrical safety is a critical aspect of any power distribution system, and two essential protective measures are Protective Earthing (PE) and Protective Neutral

Understanding Distribution Boxes: A Comprehensive Guide



A distribution box, also known as a power distribution box or electrical distribution box, is used to distribute electrical power safely to multiple

2 Sets 12.5x12.5x14.3in Underground Splice Boxes

2 Sets 12.5x12.5x14.3in Underground Splice Boxes W/Solid Inspection Cover Deep Enclosure Precast PE Pull Distribution Pit Access Electrical Junction Boxes

Power Distribution Boxes Explained Simply

Discover the essentials of a Power Distribution Box--how it works, key types, benefits, and tips to ensure safe, efficient electrical power management.



What is PE Cable? Advantages & Uses

Discover what PE cable is: HDPE & XLPE types explained. Where to use it (power grids/data centers) & how to maximize performance. Make the right

Grounding Basics: What are the Differences Between

What do "PE" and "FG" mean? PE - Protective Earth. In the UK, they call it "earthing". In the US, we call it "grounding". They mean the same electrical

Power distribution blocks (PDB) for DIN rails

Phase distribution blocks (PDB) and sub-distribution blocks for potential distribution
Clamping blocks and power distribution blocks (PDB) for the DIN rail are suitable



How to Wire 3-Phase, 400V Distribution Board? IEC

Wiring 3-?, 400V Load Circuits in Distribution Board In a three phase distribution board, all the three phase, 400V load points can be connected directly to the

Correct Connection Method Of Grounding Wire Of

Open the distribution box and find the position marked with the grounding plate or PE letter. This position is the connection point of the grounding

1.An Ultimate Guide for Metal Distribution Boxes



1. Introduction Distribution boxes are a crucial component of any residential, commercial, or industrial electrical system. These enclosures serve as a hub for

Protective Conductor (PE): What is it? (Designation, Cross-section)

Each exposed-conductive-part of class I equipment must be connected by a separate protective conductor which is formed, for example, as a branch from the protective conductor of the

A Step-by-Step Guide to Wiring an Electrical Panel Box

Find out how to properly wire an electrical panel box with a comprehensive diagram and step-by-step instructions.



Contact Us

For datasheets, pricing, or custom optical networking solutions, please visit:
<https://www.entrenamientointeligente.es>