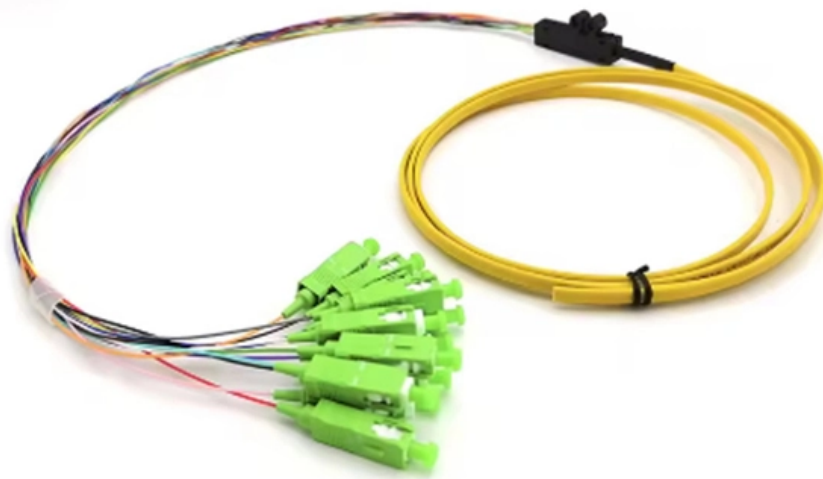




**EIT Opto-Routing**

# **Power Fiber Optic Cable Parameter Settings**





## Power Fiber Optic Cable Parameter Settings

---

### Acceptable Light Levels for Fibers and the Optical Power Budget

---

The acceptable light levels for fiber optic communications are dependent on the optical power budget and receiver sensitivity--learn more in our brief article.

### Fiber Optic Cable Testing 101: Tools, Techniques, and

---

Fiber Optic Cable Testing Ensures network reliability by using tools like visible light sources, power meters, and OTDRs to measure signal loss,



## **A Guide to Picking the Right Laser Parameters for Your**

---

Table of Contents When it comes to fiber laser machines, selecting the right laser parameters is crucial for achieving optimal results. However, with so

## **The FOA Reference For Fiber Optics**

---

Testing fiberoptic components and cable plants requires making several measurements with the most common measurement parameters listed in the Table below.

## **FOA Fiber U Quickstart Guide: Fiber Optic Testing**

---

This is your "QuickStart" guide to testing optical power in fiber optic communications systems with a fiber optic power meter. We'll give you the basic information you



## Fiber Optic Cable Installation and Handling Instructions

---

The information contained in this manual should serve as a guide to proper handling, installing, testing, and for troubleshooting problems with fiber optic cables.

### Optical parameters

---

This guide provides average transmit and receive power ranges for transceiver modules. Transceivers are manufactured to meet the specifications (usually of the IEEE standards) and ranges represent

### Guidelines Corning Recommended Fiber Optic Test

---



roduction This paper explains the recommended guidelines for testing an installed fiber optic system. Fiber optic testing of a newly installed system not only verifies that the system meets its design

## **TR-3552: Optical network installation guide**

---

Attenuation, defined as optical power loss measured in decibels (dBs), is the primary field test parameter in fiber optic systems. The total network/system's attenuation includes the contributions of the cables,

## **Powered Fiber Cable System Technical Overview**

---

This document is intended to describe the purpose and function of the CommScope Powered Fiber Cable System used in conjunction with the PoE Extender. It will provide an overview of what options



## Fiber Optics: Understanding the Basics

---

Optical fiber can also be used to deliver power remotely for devices in places where electricity is not available. o Illumination -- A bundle of fibers gathered together

## FPM/FLS 101 Fiber Optic Test Meter Setup Guide

---

This guide provides instructions for an experienced technician to begin using the Extron Fiber Optic Power Meter (FPM 101) and Light Source (FLS 101). The Extron Fiber Optic Test Set includes all the

## How to Laser Cut Stainless Steel: A Complete Guide

---



Why Fiber Lasers Are the Most Suitable for Laser Cutting Stainless Steel Fiber lasers work by using a fiber optic cable to deliver a high-powered laser beam to

## Fiber Optic Cable Range: Comprehensive Guide

---

Fiber optic cable range varies depending on whether you're using single or multimode fiber. Learn the potential for both cable types.

## Fiber Optic Basics

---

Fiber Optic Basics Optical fibers are circular dielectric wave-guides that can transport optical energy and information. They have a central core surrounded by a



## Fiber Optic System Testing Tutorial

---

When a fiber optic system is successfully tested and determined to meet the customer's specific requirements and relevant industry standards, the system performance and individual links

## The FOA Reference For Fiber Optics

---

That's good, because we're used to negative dBm being power smaller than 1mW and positive dBm being power larger than 1mW. However if one makes an

## How to Test a Fiber Optic Cable: Best Methods & Tools

---

Want to know how to test a fiber optic cable? We'll look at the most common fiber testing methods and how to use them properly.



## Testing The Installed Fiber Optic Cable Plant

---

All three tests end up with the same test setup (Figure 1), but the reference power can be set with one, two or three cables as shown in the three setups below. The

## The FOA Reference For Fiber Optics

---

Testing fiber optic components and cable plants requires making several measurements with the most common measurement parameters listed in the

## The FOA Reference For Fiber Optics

---

Typically both transmitters and receivers have receptacles for fiber optic connectors, so



measuring the power of a transmitter is done by attaching a test cable to the

## **Calculate the Fiber-Optic Cable Power Budget , Juniper Networks**

---

This planning helps you ensure that fiber-optic connections have sufficient power for correct operation. The power budget is the maximum amount of power the link can transmit.

## **Handbook Optical fibres, cables and systems**

---

Effective area ( $A_{eff}$ ) is a parameter that is closely related to optical fibre non-linearities that will affect the transmission quality of the optical fibre systems, especially in long-haul, optically amplified systems.



## How to Use an Optical Power Meter(OPM): A Beginner's

---

Get everything you need to know about an optical power meter including its types, applications and fiber optic power meter test procedure.

## Fiber Optic Power Meters - CableOrganizer

---

Once you install and terminate fiber optic cables, it's time to test them. A test should be conducted for each fiber optic cable plant for three main areas: continuity,

## Reference Guide to Fiber Optic Testing

---

Prior to installation, fiber inspections are performed to ensure that the fiber cables received from the manufacturer conform to the required specifications (length, attenuation, etc.) and have not been



## **Beginner's Guide to Power Meter Usage for Optical**

---

Use a power meter for fiber optic testing by cleaning connectors, setting wavelength, calibrating, and following step-by-step procedures for

## **Cisco 10GBASE SFP+ Modules Data Sheet**

---

The Cisco 10GBASE SFP+ modules give you a wide variety of 10 Gigabit Ethernet connectivity options for data center, enterprise wiring closet, and

### **Contact Us**

---

For datasheets, pricing, or custom optical networking solutions, please visit:  
<https://www.entrenamientointeligente.es>