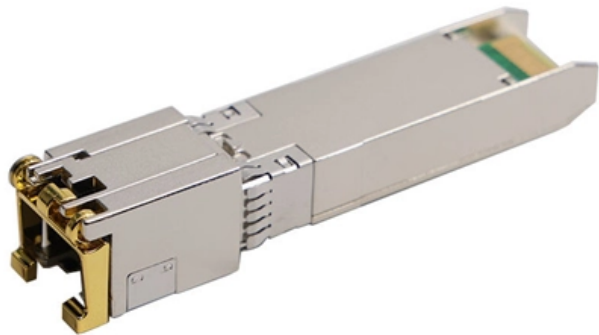


# **Power transmission optical cable clamp**





## Power transmission optical cable clamp

---

# FTTH Installation Accessories - Premium Cable

---

ZION Communication focuses on optical fiber cable hardware products, offering FTTH and ADSS series solutions--including stainless steel, nylon, and

## ADSS Suspension Clamps: Functions, Features & Uses

---

Following best practices for fiber optic cable clamps Proper use of ADSS suspension clamps ensures its longevity, durability, and resilience in



## Tension and support clamps for OCGT, OKSN and power transmission

---

Clamps of the following types are presented on the site: Stretched; Supportive; Dice; Piercing. Optical cable hangers are made of stainless steel or corrosion resistant, durable aluminum alloy. The clamps

## Role of Different Types of OPGW Fittings

---

Conclusion OPGW fittings play a pivotal role in ensuring seamless data transmission alongside electrical power. Splices, connectors, dead-ends,

## ADSS Suspension Clamps: Functions, Features & Uses

---

The ADSS Suspension Clamp is a specialized hardware fitting designed to securely suspend All-Dielectric Self-Supporting (ADSS) fiber optic



## **Aluminum Bolted Strain Tension Power Optical Cable**

---

Bolt type aluminum alloy tension clamps are suitable for fastening various overhead conductors at corners and terminal poles in power plants, substations and

## **Suspension Clamp for Overhead Lines and**

---

Suspension Clamp A suspension clamp is designed to give the conductors both physical and mechanical support. This is important especially when you have

## **Provide Various Fiber Cable Clamps-OMC FTTH**

---



Terminal clamps are used to secure cable ends and prevent damage due to lack of fixation. The design of these fixtures aims to ensure that cables do not slide or fall off when subjected to tension while

## **ADSS OPGW Fiber Optic Cable HDG Pole/Tower**

---

The Preformed Suspension Clamp is the connecting hardware of ADSS cable hang in transmission line pole (tower). It can reduce static stress at the support point

## **Optical Fiber Cable Clamp for Telecom Tower**

---

Optical fiber cable clamp is designed to hold & fix 7mm cable and 21mm power. Each unit of plastic hanger has 3 holes, 2 holes for 7mm plus 1 hole for 21mm.



## **Stainless Steel Combined Feeder Clamp for Optical**

---

As a fixed device, feeder clamp is suitable for use in communication base stations, repeaters, indoor coverage systems, wireless paging and microwave

## **Reliable Tension Clamp Solutions for Fiber Optic Cable**

---

Explore Gcabling's tension clamp kit for ADSS fiber cable and drop cable installation--includes stainless steel band, buckle, fixing accessories, and

## **Bolted Aluminum Suspension Clamp**

---

It provides controlled clamping force and uniform stress distribution, preventing cable sheath damage while maintaining long-term mechanical stability. Designed for



## **OPGW Hardware & Fitting Tension Assembly**

---

In the world of telecommunications, OPGW (Optical Ground Wire) systems are crucial for ensuring reliable data transmission while also providing protection

## **Hybrid Cable Clamp for DC Power and Fiber Optic (FO)**

---

Hybrid Cable Clamp for (3) DC Power 10-20mm and (3) Fiber Optic 4-8mm Hybrid cable clamp is designed to hold three runs of power cable from 10mm to 20mm

## **Optical Fiber Cable Clamp for Telecom Tower**

---



The optical fiber cable clamp is designed and supplied to hold & fix 7mm wire cable and 21mm power. Each unit of plastic hanger has 3 holes, 2 holes for 7mm wire

## **How to Choose the Right Optic Cable Tension Clamp?**

---

Optic cable tension clamps are designed to securely fasten optical fibers to poles or towers, ensuring stability and protection against environmental factors. The primary components of these clamps

## **Cable Clamps / Cable Clips**

---

Both are designed to prevent cables from tangling, sagging or getting damaged, enhancing the overall reliability of the system. Our range includes different sizes, materials and styles, from plastic



## **Downlead Clamp for Fiber Optic Cable, Pole and Tower**

---

Downlead Clamp The downlead clamps support the OPGW (optical ground wires) from the upper part of the tower to the splice box. With proper installation of the

## **Fiber Suspension Clamp**

---

Fiber Suspension Clamp, also known as fiber optical hooks, is commonly used to protect non-self-supporting overhead outdoor fiber optic cables, including ADSS

## **Aluminum hoop/Pole Bracket Gcabling fibra optica**

---



Aluminum hoop/Pole Bracket Gcabling fibra optica Overhead line power fitting suspension clamp aerial cable anchoring bracket ZCALC-01 offered by China

## Secure Networks with a Fiber Optic Tension Clamp

---

Secure aerial networks with a Fiber Optic Tension Clamp. Discover types, selection, and installation to prevent sag and protect cables.

## Power and Optical Cable Clamp

---

The Power and Optical Cable Clamp with cushion inserts is a kind of combined fixture; it is mainly applied to communication cable, power cable and CPRI cable.



## Suspension Clamp Archives

---

Fiber Optic Suspension Clamp: A Stable Guardian of Overhead Optical Cables Fiber suspension clamp is a connection fitting designed for overhead optical cables,

## Fiber optic power cable clamps

---

Fiber optic power cable clamps are essential components in telecommunications and power transmission infrastructure, ensuring secure, stable, and long-lasting support for cables exposed to

## Tension Clamp

---

Tension Clamp is a core connection hardware in high-voltage transmission lines and optical cable laying. It is used to fix the conductors and bear the full tension load



## Hardware For OPGW Cable

---

OPGW optical cable will be hung in the transmission line towers. Clamp can reduce the cable hanging points in the static stress, enhance the ability of cable vibration,

### Contact Us

---

For datasheets, pricing, or custom optical networking solutions, please visit:  
<https://www.entrenamientointeligente.es>