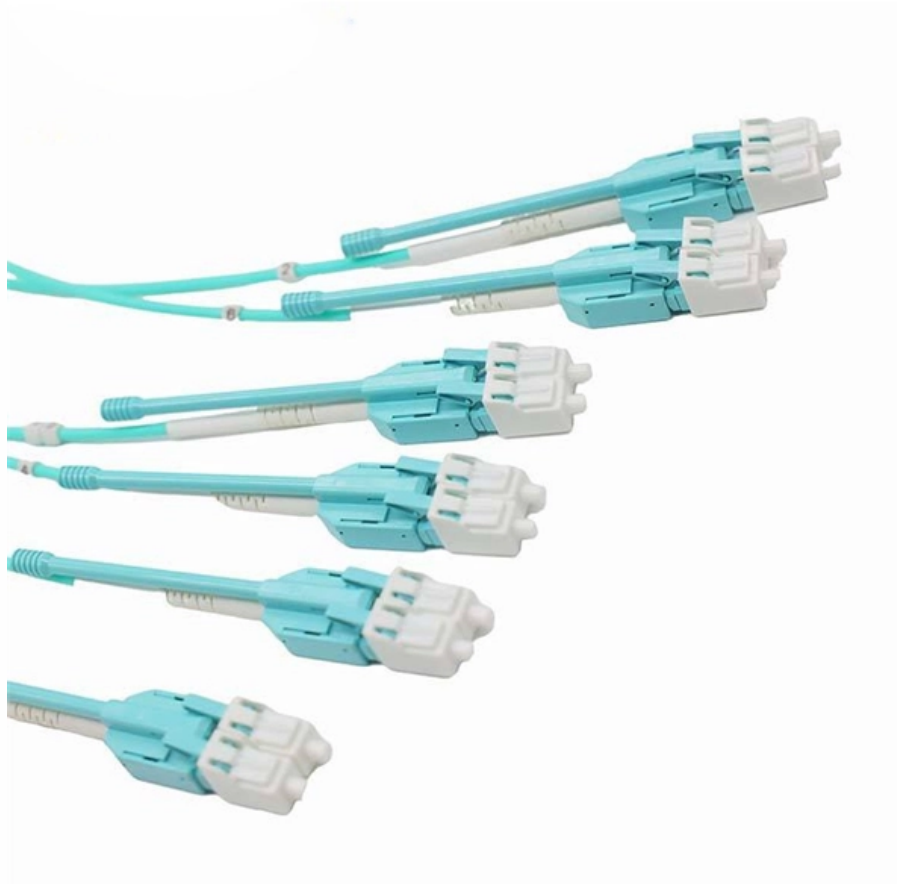


Primary Distribution Box Power Line





Primary Distribution Box Power Line

Electric power distribution

In this system, the primary distribution network supplies a few substations per area, and the 230/400 V power from each substation is directly distributed to end users

The Complete Guide to Distribution Box: Installation, Types & More

The primary purpose of a distribution box is to provide a safe and organized way to control electrical circuits. When an electrical fault occurs, such as an overload or short circuit, the protective



Distribution Automation Handbook

In the following, the distribution power transformer features, construction and protection and their influence to the complete distribution system performance are discussed.

Distribution Automation Handbook

A primary distribution substation is the connection point of a distribution system to a transmission or a sub-transmission network. Outgoing feeders from a primary distribution substation are typically

primary distribution system

The primary distribution system is that part of the electric distribution system between the distribution substation and distribution transformers. It is made up of circuits



The Meaning and Function of Primary, Secondary, and Tertiary

A newly constructed residential area introduces a 10kV power line to a substation. From the transformer's low-voltage side (0.4kV), power is distributed to a main distribution panel (primary

AC Distribution System , Primary distribution

The primary distribution circuit delivers power to various substations, called distribution substations. The substations are situated near the consumers

The Meaning and Function of Primary, Secondary, and Tertiary



The primary distribution box refers to the main distribution box, typically located in the distribution room. These boxes feature bottom entry and exit cables, front-opening doors, and main

Single Phase Distribution Box Definition and Main Parts

A single phase distribution box controls and protects home or office circuits. Learn its definition, main parts, and how it ensures electrical safety.

What Is a Distribution Box?

Distribution boxes work by distributing electrical power. They receive electrical power from the main power line -- or another primary power line -- and



System Arrangements

Typical equipment for this system arrangement is a single unit substation consisting of a fused primary switch, a transformer of sufficient size to supply the loads, and a low-voltage switchboard. This

Understanding Primary Distribution in AC Electrical Power

Primary distribution systems are designed to ensure minimal energy loss during transmission over relatively long distances. Operating typically in the

The difference between the first, second, and third levels of



Generally, first level distribution does not allow direct use of electrical equipment, and second level distribution will be by power equipment because it is three-phase electricity, while third

Distribution Boxes Types - The Complete Guide

The power distribution boxes deliver electricity from the main electrical main to other circuits. Several distribution boxes are designed for specific use in

Power Distribution Systems

Figure 22: Distributed energy resources Operation of Power Distribution Systems Power distribution networks operate by controlling the flow of electricity from



Single-line diagram of AC transmission and distribution

Each part can again be sub-divided into two: primary transmission and secondary transmission and similarly, primary distribution and secondary

Explore Power Distribution Box Types and Functions

Power distribution boxes are used in commercial and residential buildings and are part of the electrical system, also known as switchboards.

Electric Power Distribution System Basics , Electrical A2Z

The article provides an overview of electric power distribution systems, focusing on one-line diagrams, busways, and grounding. It explains how



The Primary and Secondary distribution in electrical

Understanding the fundamental distinction between Primary and Secondary distribution in electrical systems is pivotal for designing efficient and

Distribution Boards

Distribution boards, often referred to as electrical panels or breaker boxes, serve as the nerve center of any electrical system. Here we explore the crucial parts of a distribution board and gain insights into

Power Distribution Boards: Understanding their role



Learn the anatomy and functions of a power distribution boards, stay safe working with it, and ensure reliability. Learn about their types and safe usage

Power Distribution Systems

Distribution lines are pipes that transport electricity from distribution substations to users. They operate at lower voltages than transmission lines and span cities,

The basics of primary distribution circuits (substation

Primary-loop systems are sometimes used on distribution systems for areas needing high reliability (meaning limited long-duration interruptions). In the



Phases and wires in distribution of AC power

The distribution system begins either at the power substation where power is delivered by overhead transmission lines and stepped down by

Three-Tier Power Distribution System in a Newly Constructed

In a newly constructed residential area, a 10kV power line is introduced into the substation. After stepping down the voltage through the transformer's low-voltage side (0.4kV), power distribution is

Distribution Box: Types and Functions , Axis-Electricals

A distribution box ensures that electrical supply is distributed in the building, also known as a distribution board, panel board, breaker panel, or electric panel.



Understanding Primary Distribution in AC Electrical Power

Key Highlights
Role in Power Delivery: Primary distribution transports electrical power at medium voltages from substations to transformers where it is

Contact Us

For datasheets, pricing, or custom optical networking solutions, please visit:
<https://www.entrenamientointeligente.es>