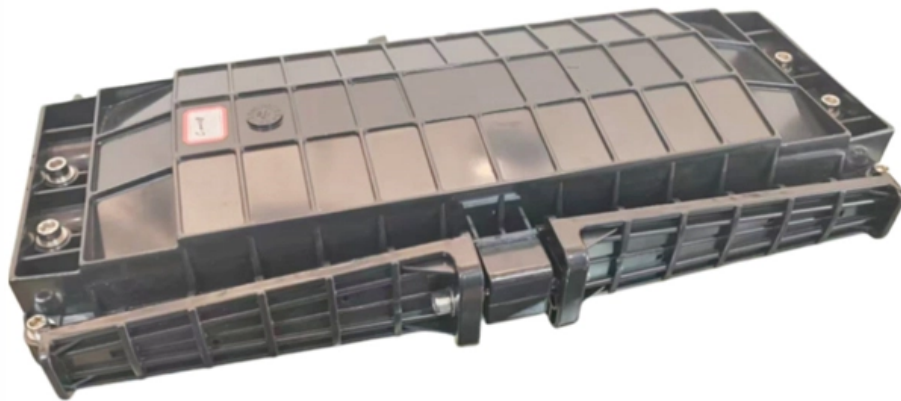


# **Reasons for burning out the SFP optical module**





## Overview

---

SFP or SFP+ optical transceiver failure can happen in multiple recognizable ways. The most notable fault is the "module not detected" error, which describes a situation in which a switch cannot detect the transceiver. When SFP failure occurs, it's important for technicians to figure out the reason immediately and repair it, otherwise, the 1 Gigabit link may break out. The truth is, SFP modules stop working for reasons that are usually simpler — or more hidden — than you think. This article skips the textbook theory and goes straight to the eight real-world reasons SFP modules fail in the field, ranked from most to least common, with practical fixes for each one. Have you ever experienced an unexpected network outage due to the failure of an SFP/SFP+ optical transceiver?

Network outages can bring your ability to communicate and work to a halt, and your IT team will likely be frantically looking for a solution. An SFP Tx Fault is a protection mechanism where the transceiver shuts down its laser due to abnormal conditions such as overheating, unstable power, or laser failure.



## Reasons for burning out the SFP optical module

---

### The Main Causes of SFP Module Failures

---

The end face of the fiber connector and optical slots is exposed to the environment and contaminated by dust. Using the scratched or poor-quality fiber

### What are the important causes of the failure of the SFP optical module?

---

For example, the SFP optical module is often electrified. The static sensitive pins of the SFP optical module are not touched by static electricity protection . There is no anti-static



## Troubleshooting: Common Issues with SFP Transceivers

---

Small Form-factor pluggable (SFP) transceivers are critical components in modern networking, facilitating high-speed data transmission in

## How to Remove SFP Module from Switch Step-by-Step

---

? Types of SFP Latch Mechanisms Explained One of the main reasons users search "how to remove SFP module from switch" is physical uncertainty --

## Troubleshooting and Repairing Optical Transceiver Failures in

---

When should I replace an SFP module? Replace an SFP module that is failing repeatedly from an error perspective, exhibiting physical damage, or its performance has degraded



## **5 troubleshooting tips for connecting the SFP's**

---

Here are 5 troubleshooting tips for connecting the SFP's. Have you ever tried to plug an optic SFP+ transceiver into an SFP+ port to discover that the connection didn't

## **Transceivers: How to Stop Burnouts and Errors**

---

The common mistake A common mistake that happens when using optical transceivers is that users tend to accidentally burn them out by

## **SFP Safe Plug-and-Play Ultimate Guide**

---



How can proper SFP Safe Plug-and-Play handling protect your network? Learn key steps for safe installation, removal, cleaning, and avoiding

## Can SFP Go Bad Understanding and Troubleshooting SFP Modules

---

SFP modules are compact, hot-swappable transceivers used to interface network devices like switches, routers, and servers. They support various types of network connections, including Ethernet, fiber,

## 1Gb Multimode Optics Constantly Burning Out : r/networking

---

Haven't seen this on our network, but we've mostly been phasing out SX SFPs. On the other hand, we've been having some strange issues with LR SFPs (both from FS and first party) where we're



## **How to Install and Remove SFP Transceiver Modules?**

---

To Install an SFP+ Optical Transceiver Module Besides SFP+, SFP, QSFP, SFP28, QSFP28 modules are all referred to as pluggable port modules. All of these modules' installation and

## **Addressing SFP Failures: Fix Your Malfunctioning SFP**

---

Have you ever plugged an optic SFP transceiver but discovered that the connection didn't work? SFP failure may be caused by several aspects. Here

## **Advanced Troubleshooting Guide for Optical Transceiver (2025)**

---



SFP optical transceivers and high-speed modules are sensitive to environmental conditions. Excessive temperature, humidity, dust, or physical mishandling can damage a transceiver's laser or optics.

## **optical transceiver sfp+ 10g single mode module 1310nm 10km lc**

---

Upgrade networks with our optical transceiver sfp+ 10g single mode module 1310nm 10km lc. This LC transceiver delivers effortless 10km connectivity for data centers and servers.

## **What Is an SFP Optic Module and How Does It Work**

---

SFP optic modules convert electrical to optical signals for fast, long-distance data transfer. Hot-swappable, versatile, and compatible with various



## **8 Reasons Your SFP Module Stopped Working (And the One Most**

---

This article skips the textbook theory and goes straight to the eight real-world reasons SFP modules fail in the field, ranked from most to least common, with practical fixes for each one.

## **Essential Tips for SFP Modules Maintenance**

---

SFP (Small Form-factor Pluggable) modules play a critical role in high-speed data transmission across enterprise, data center, and telecom networks.

## **How to Install and Remove SFP Transceiver Modules?**

---



Installing and removing SFP (Small Form-factor Pluggable) transceiver modules is a common task in managing and maintaining fiber optic networks.

## **Ultimate Guide to SFP Module Temperature**

---

Ultimate guide on managing SFP module temperature. Learn causes, monitoring, cooling methods, and maintenance to prevent overheating and

## **How Long Do SFP/QSFP Last? Expected Lifespan**

---

Different module types and deployments age differently. Short-reach SR optics in intra-rack or short aggregation runs are forgiving and typically outlast



## SFP is getting damaged

---

Longer range fiber optic modules use a much stronger transmitter source, and could require optical attenuation (or risk burning out the receiver on the short-haul side).

## Troubleshooting Common SFP Module Issues

---

Learn how to troubleshoot common SFP module issues including physical faults, hardware damage, compatibility, and configuration errors. This guide provides

## What are the Best Practices for SFP Module Maintenance?

---

Too high voltage will destroy the SFP module, and too low voltage will make the SFP optical module unable to work properly. Therefore, the power supply of the SFP module needs to



## **SFP Tx Fault Explained: Causes, Fixes & 400G Failure Risks**

---

Learn what causes SFP Tx Faults, how to troubleshoot them, and why 400G optics fail more often. Includes real-world diagnostics and prevention strategies.

## **SFP Issue: Causes, Fixes, and Troubleshooting Guide**

---

Learn how to fix SFP issues fast: no link light, link flapping, detection errors, compatibility problems, and optical power checks.

## **SFP Optical Transceiver Tutorial on Installation,**



## Removal and

---

This optical transceiver tutorial will introduce how to install SFP module, how to remove SFP module, and give some insights on the operation precautions. Following these tips will maintain

## What Happens When an Optical Transceiver Runs Too Hot

---

Optical transceivers (SFP/SFP+/QSFP/QSFP28 and similar) are the backbone of modern fiber networks. While they're designed to operate within specified

## What should you do if the optical SFP Transceiver fails?

---

Background The role of the SFP Transceiver in the entire optical fiber transmission link is very important, but various problems are likely to occur in actual use. Today I will briefly



## **SFP+ compatibility issues? Here are 5 troubleshooting tips!**

---

Experiencing SFP compatibility issues? Discover 5 essential troubleshooting tips to diagnose and resolve common problems for seamless network performance. Read more on the Excentis blog!

### **Contact Us**

---

For datasheets, pricing, or custom optical networking solutions, please visit:  
<https://www.entrenamientointeligente.es>