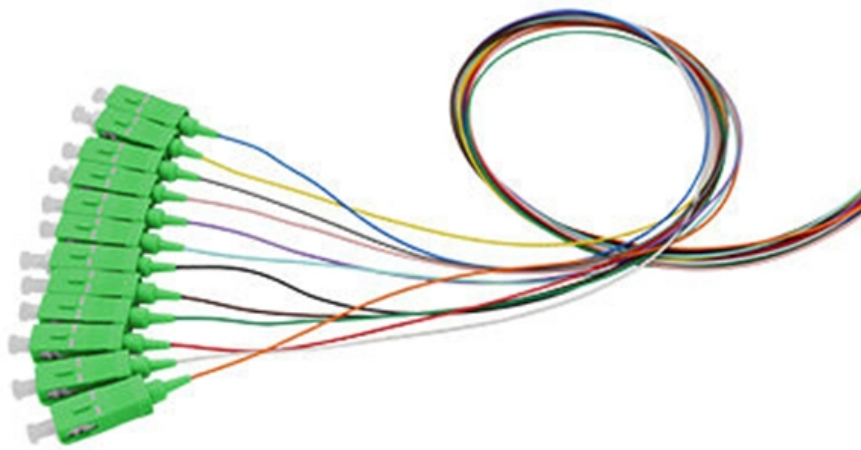


Recommended 100Mbps PoE Switches





Recommended 100Mbps PoE Switches

10/100 POE Switches

Did you know that most POE powered devices use less than 100 Mbps each? Speaking of IP Cameras in particular, most of them use less than 10 Mbps each. Therefore if you can save money and go for

6-Port 10/100Mbps Desktop Switch with 4-Port PoE+

TL-SF1006P is a 5-Port 10/100Mbps Desktop Switch with 4-Port PoE+. Just plug and play with PoE Transmission for Surveillance up to 250 m. The total 67 W PoE



9-Port 10/100Mbps Desktop Switch with 8-Port PoE+

9 × 10/100 Mbps RJ45 ports 8 × PoE+ ports transfer data and power on individual cables
Works with IEEE 802.3af/at compliant PDs Supports PoE Power up to 30 W for each PoE port Supports PoE

10-Port 10/100Mbps Desktop Switch with 8-Port PoE+

The LS110P is a 10-Port 10/100Mbps Desktop Switch with 8 ports supporting the PoE+ standard. It offers a simple way to expand a wired network by transferring power and data over a single Ethernet

16-Port 10/100 Mbps + 2-Port Gigabit Rackmount Switch with 16-Port PoE+



The TL-SL1218MP is a 16-Port 10/100Mbps + 2-Port Gigabit Rackmount Switch with 16-Port PoE+, ideal for small and medium business IP surveillance with a 250 W PoE budget. The plug-and-play design

SODOLA 8 Port PoE Switch 100Mbps/8 PoE+ Port,2 Ethernet

SODOLA 8 Port AI PoE Switch 100Mbps 8-Ports 100M PoE Switch, using high-quality high-speed network IC and the most stable PoE chip, complies with 802.3af/at standard provides a seamless

Selecting the Right PoE Switch and how to use PoE

Choosing the right PoE switch can provide higher efficiency and better performance for your network. Make sure you consider the above factors to choose the switch



How to Choose Proper PoE Switches to Build an SMB

How to Choose Proper PoE Switches to Build an SMB Network System? Small to medium-sized businesses (SMBs) tend to apply network

Real HD 10 Port PoE Switch, 8 Ports PoE+ 2 Uplink Unmanaged

Note: Real HD active POE switches support passive & non poe devices, but when the switch is directly connected to passive poe devices or non-poe devices, the switch can only transmit data and cannot

20 Best Network Switches Under \$100 (2026)



20 Best Network Switches Under \$100 (2026) November 30, 2025 by Hayden James, in Blog General Choosing the right network switch is essential for

9-Port 10/100Mbps Desktop Switch with 8-Port PoE+

TL-SF1009P is a 9-Port 10/100Mbps Desktop Switch with 8-Port PoE+. Just plug and play with PoE Transmission for Surveillance up to 250 m. The total 65 W PoE

Selecting the Right PoE Switch and how to use PoE

With a multitude of PoE switches available on the market, choosing the right one can be difficult. The original PoE standard was called IEEE 802.3af, and allowed for



Ultimate Guide to Choosing Long-Distance PoE Switches

That's where long-distance PoE switches become essential. This guide will navigate the key considerations for selecting the right switch and highlight how Velolan Networks provides

7 Best PoE Switches (May 2026) Tested and Reviewed

After testing 15 different models and analyzing thousands of user reviews from forums like r/HomeNetworking and ServeTheHome, I have narrowed down the 7 best PoE switches for 2026.

DES-F1006P-FE 4 + 2 100Mbps 250m PoE Switch , D-Link



Smart power and minimum consumption guarantee PD requirement. Fanless design, energy saving and environmental protection. Download the datasheet.

8-Port 10/100Mbps Desktop Switch with 4-Port PoE+

TL-SF1008P is a 8-Port 10/100Mbps Desktop Switch with 4-Port PoE. Just plug and play with PoE Transmission for Surveillance up to 250 m. The total 66 W PoE

Amazon : TP-Link TL-SF1008P, 8 Port 10/100Mbps

The 8-Port 10/100Mbps Desktop Switch with 4-Port PoE provides a seamless network connection. It integrates 100Mbps Fast Ethernet and 10Mbps Ethernet



Best PoE Switches 2025: Ultimate Guide for Home & Office

Looking for the best PoE switch for your home network? Our expert guide reviews top recommended network switches, from 8-port to 16-port gigabit

14 Best Poe Network Switches of 2025 -- Power Your

I've researched the top PoE network switches of 2025 and found excellent options for different needs, from compact unmanaged models to

7 Best PoE Switches of 2025 - Power Your Network

Unlock the secrets to the 7 best PoE switches of 2025 and elevate your network efficiency; discover what makes them stand out!



10 Best POE Switch - Reviews & Buying Guide

Discover the top POE switches with expert reviews and a comprehensive buying guide. Make informed decisions for your network

16-Port 10/100Mbps PoE+ 2-Port Gigabit RJ-45 (1-Port

This series switch provides 16 100M Ethernet RJ-45 downlink ports, 2 Gigabit Ethernet RJ-45 uplink ports and 1 Gigabit combo SFP uplink port.

8-Port 10/100Mbps Desktop Switch with 4-Port PoE+



TL-SF1008P is a 8-Port 10/100Mbps Desktop Switch with 4-Port PoE. Just plug and play with PoE Transmission for Surveillance up to 250 m. The total 66 W PoE power budget for the 4× PoE ports

Contact Us

For datasheets, pricing, or custom optical networking solutions, please visit:
<https://www.entrenamientointeligente.es>