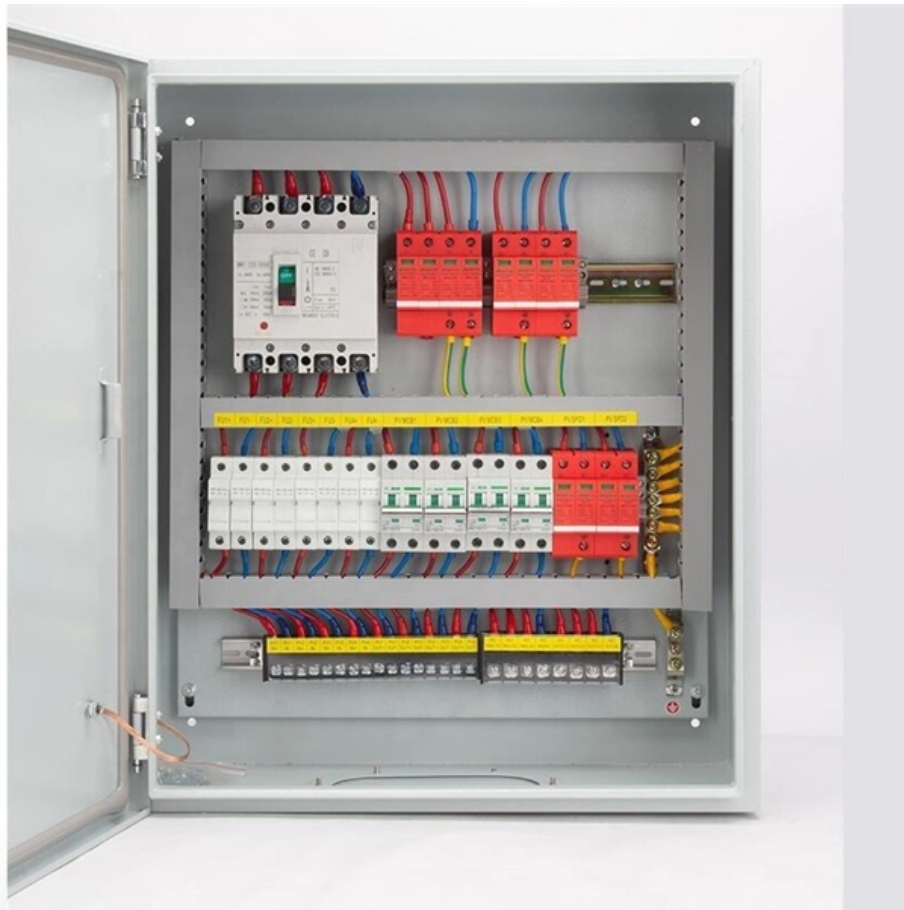


# Requirements for the flare opening of explosion-proof distribution boxes





## Requirements for the flare opening of explosion-proof distribution boxes

---

# Explosion-Proof Distribution Boxes: Special Installation Requirements

---

Explosion-proof boxes aren't metal containers - they're integrated life-preservation systems requiring holistic design, precision installation, and continuous vigilance.

## HLDP03-Series Explosion-proof Distribution Boxes Exporter China

---

[Home](#) >> [Products](#) >> [Explosion Proof Electric Apparatus](#) >> [HLDP03-Series Explosion-proof Distribution Boxes](#)



## **Structural requirements of explosion-proof distribution box and**

---

The transparent part of the observation box of the distribution box is directly glued in the opening of the cover, and the shortest path from the inside to the outside of the flameproof casing

## **BXM (D)51 Series Explosion proof Distribution Boxes**

---

BXM (D)51 Explosion proof Distribution Boxes Explosion protection to -CENELEC -IEC -NEC Can be used in Zone 1 and Zone 2 Zone 21 and Zone 22 Class I, Zone

## **Explosion Proof Enclosures , Complete Hazardous Area**

---



Learn everything about explosion proof enclosures for hazardous areas--design, certification, and industrial applications with ATEX, IECEx, and Class I Div

## **Installation Precautions for Explosion-Proof Junction Boxes**

---

Explosion-proof junction boxes have become a familiar and essential distribution equipment in modern industrial settings, primarily used for

## **Full Guide on Explosion-Proof Distribution Panel**

---

Explosion-proof distribution panels are vital components in hazardous industrial environments, ensuring safety by preventing electrical equipment from igniting



## **Explosion Proof Power Distribution Boxes CE92**

---

Flameproof and explosion proof, these power overhaul distribution boxes are suitable for use in hazardous areas. Specs: Ex mark: Ex de IIC T4 Gb DIP A21 TA, T4

## **Technical requirements for explosion-proof distribution boxes-News**

---

Special requirements can be customized, including steel pipes or cable wiring. technical requirement 1. All electrical components inside the distribution box and cabinet meet the international standards of

## **Ex-Proof & Flameproof Enclosures & Junction Box , Supermec**

---

Supermec ATEX Junction Box & Enclosures are designed to satisfy most of our clients' requirements for CONTROL explosion-proof and flameproof enclosures.



## **Principles for Connecting Explosion-Proof Distribution**

---

This article outlines the essential principles for connecting explosion-proof distribution boxes with galvanized pipes, providing practical details and best

## **IP66 Explosion Proof Distribution Boxes for Hazardous Areas**

---

Shop high-quality IP66 explosion proof distribution boxes for safe and reliable electrical installations in hazardous areas. Find durable, customizable solutions now.



## Installation requirements for distribution boxes

---

Installation of closed or explosion-proof electrical facilities; distribution box electrical components, meters, switches and lines should be arranged neatly, firmly installed, easy to operate.

## Explosion-proof distribution box installation environment requirements

---

By following these guidelines, the installation and operation of explosion-proof equipment can be made safer, more efficient, and compliant with industry standards.

## Installation and Wiring of High and Low Voltage Explosion-Proof

---

C. Handover Tests of High and Low Voltage Explosion-Proof Distribution Boxes: Details of handover tests are described in the commissioning and energizing sections. D.



## **Technical requirements for explosion-proof distribution box**

---

The electrical components in the distribution box/cabinet shall comply with their respective requirements and shall also maintain their electrical clearance and creepage distance under normal conditions of

## **Explosion-Proof Distribution Box Faults and Solutions**

---

2. After the installation of the explosion-proof distribution box, it rarely stops running once it starts working. Due to the long period without opening, the



## **Principles for Connecting Explosion-Proof Distribution**

---

Explosion-proof systems, especially in hazardous environments, demand a meticulous approach to ensure safety and compliance with regulations. This

## **Technical Specification for Explosion Proof Cabinets: A Guide**

---

Compliance with essential regulatory standards and certifications is non-negotiable for explosion proof distribution cabinets. These standards provide a framework for electrical safety in

## **Basic requirements for designing explosion-proof distribution boxes**

---



Design explosion-proof distribution box (control box) shell (explosion-proof type) explosion-proof joint surface width, joint surface hole distance, clearance, (three elements) to meet the requirements,

## **Wiring Specifications for Explosion-Proof Distribution Boxes**

---

6. Grounding of Metal Cabinets: Metal explosion-proof distribution boxes must be reliably grounded, with the grounding wire connected to the

## **Explosion proof distribution box standards and installation issues**

---

Measures: In order to ensure safe use, lighting explosion-proof distribution boxes (boards) are required not to be made of flammable materials. Even in dry, dust-free places, wooden explosion-proof



## Special requirements for cable laying and distribution box installation

---

Working in potentially explosive environments means every component of your electrical system becomes a potential spark that could ignite disaster. It's not just about compliance - it's about

## Intrinsically Safe Store

---

Distribution Boxes BXM(D)81 Series Explosion-proof Illumination (Power) Distribution Boxes (Ex d IIB+H2) Explosion protection to -CENELEC -IEC -NEC Can be used in Zone 1 and Zone 2 Zone 21

## Explosion-Proof Distribution Box , Product Center

---



Explosion-proof distribution boxes are designed to safely control and distribute electrical power in hazardous environments, preventing ignition risks.

## Contact Us

---

For datasheets, pricing, or custom optical networking solutions, please visit:  
<https://www.entrenamientointeligente.es>